

SKOONKA CREEK GOLD PROPERTY

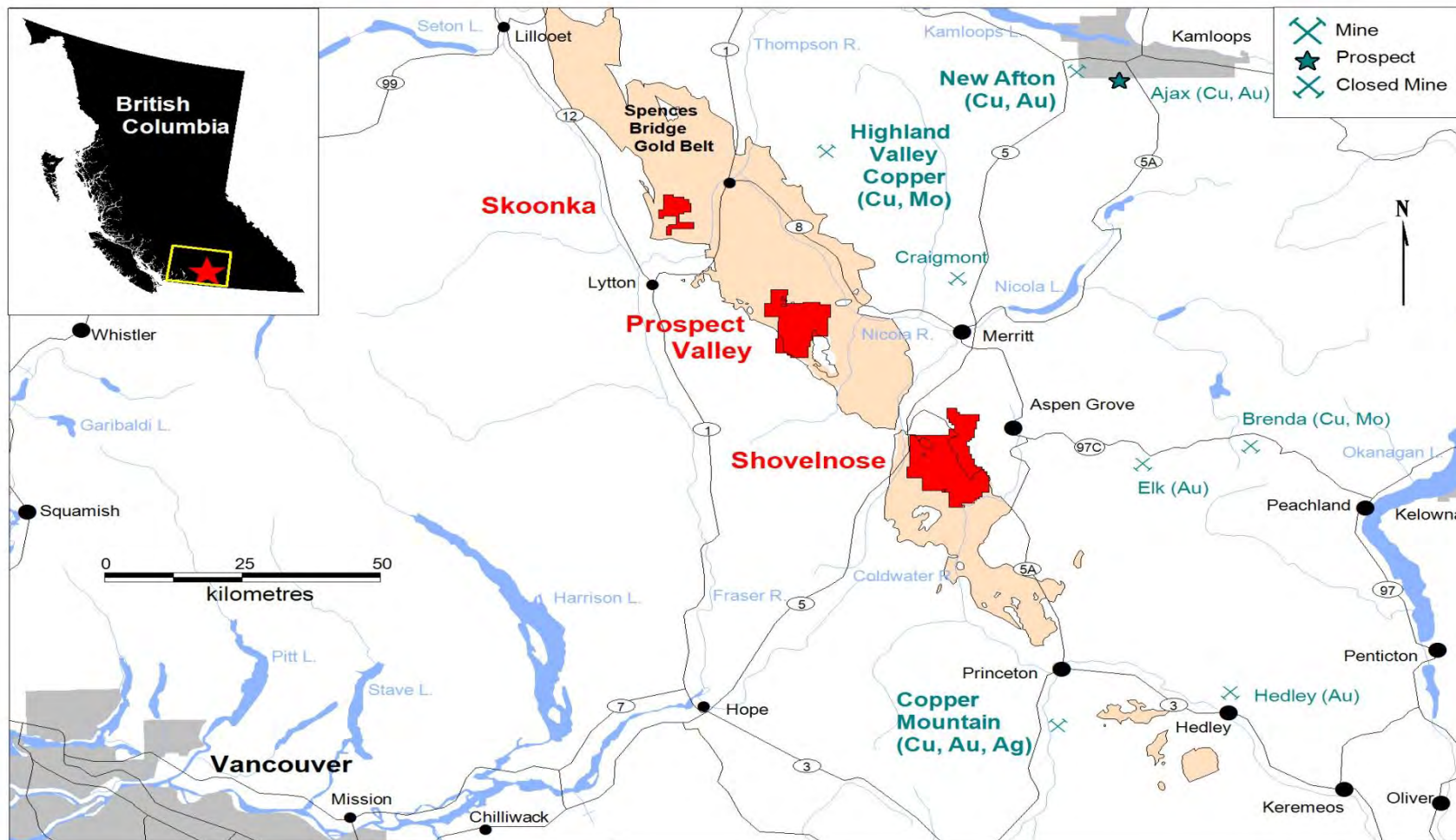
June 2017

www.westhavenventures.com

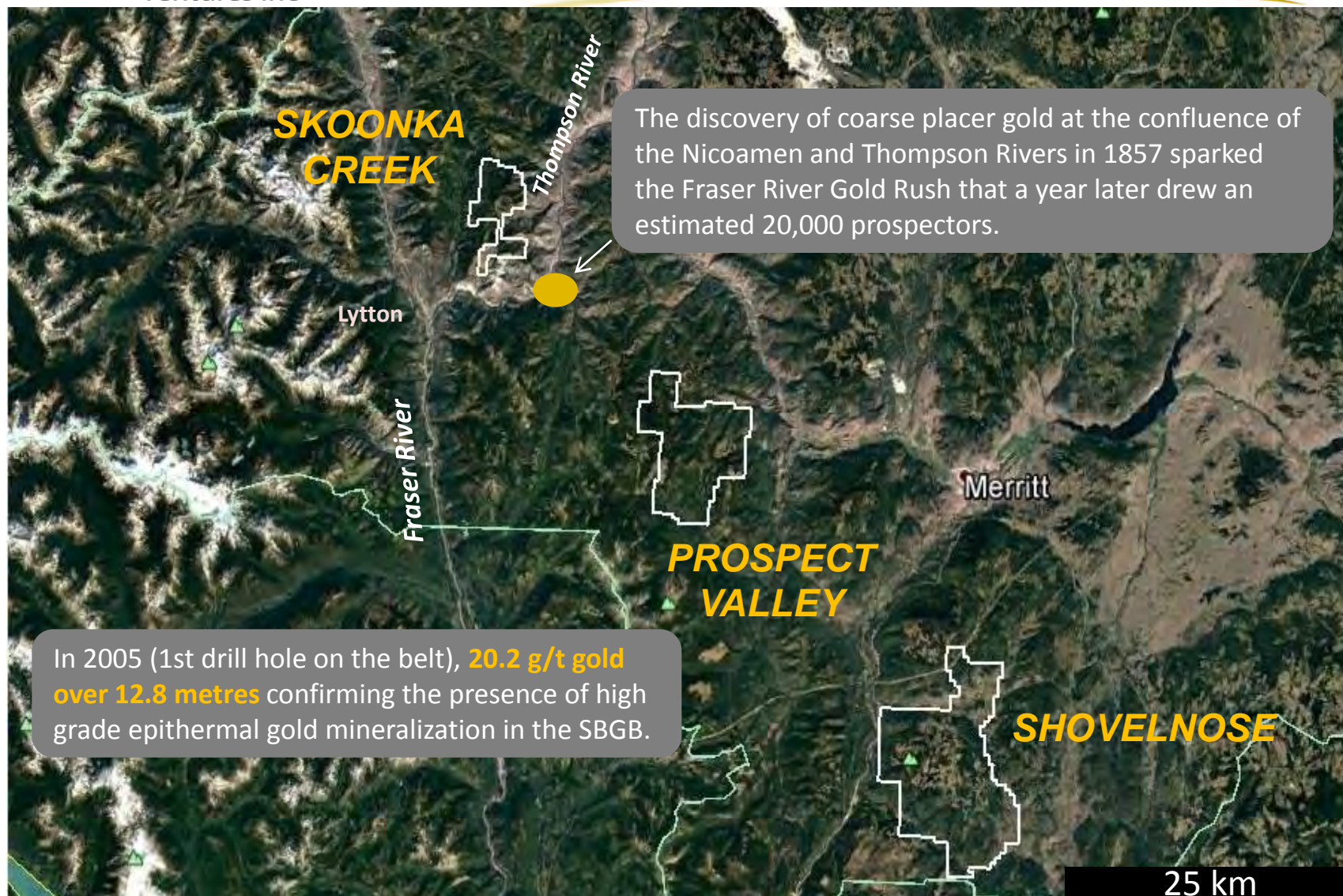
CAUTIONARY & FORWARD LOOKING STATEMENTS

Certain statements contained in this presentation that are not historical facts are forward-looking statements as that term is defined in the United States Private Securities Litigation Reform Act of 1995. In addition, certain statements in this presentation may be considered forward-looking information under applicable Canadian securities laws. Forward-looking statements and forward-looking information address future events and conditions and therefore involve known and unknown risks and uncertainties. Forward-looking statements are frequently characterized by words such as “plans”, “expects”, “estimates”, “projects”, “intends”, “believes”, “anticipates” and other similar words, or statements that certain events “may” or “will” occur. They can also be identified by the fact that they do not relate strictly to historical or current facts. Forward-looking statements are based on the opinions and estimates of management at the date the statements are made, and are subject to a variety of risks and uncertainties and other factors that could cause actual events or results to differ materially from those projected in the forward-looking statements. These factors include, but are not limited to, the inherent risks involved in the exploration and development of mineral properties, the uncertainties involved in interpreting drill results and other exploration data, fluctuating metal prices, the possibility of project cost overruns or unanticipated costs and expenses, uncertainties relating to the availability and costs of financing needed in the future and other specific factors that may be identified in the course of this presentation. No forward-looking statement can be guaranteed and actual results may differ materially from those currently anticipated in such statements. The Company undertakes no obligation to update forward-looking statements except as required by applicable law. The reader is cautioned not to place undue reliance on forward-looking statements.

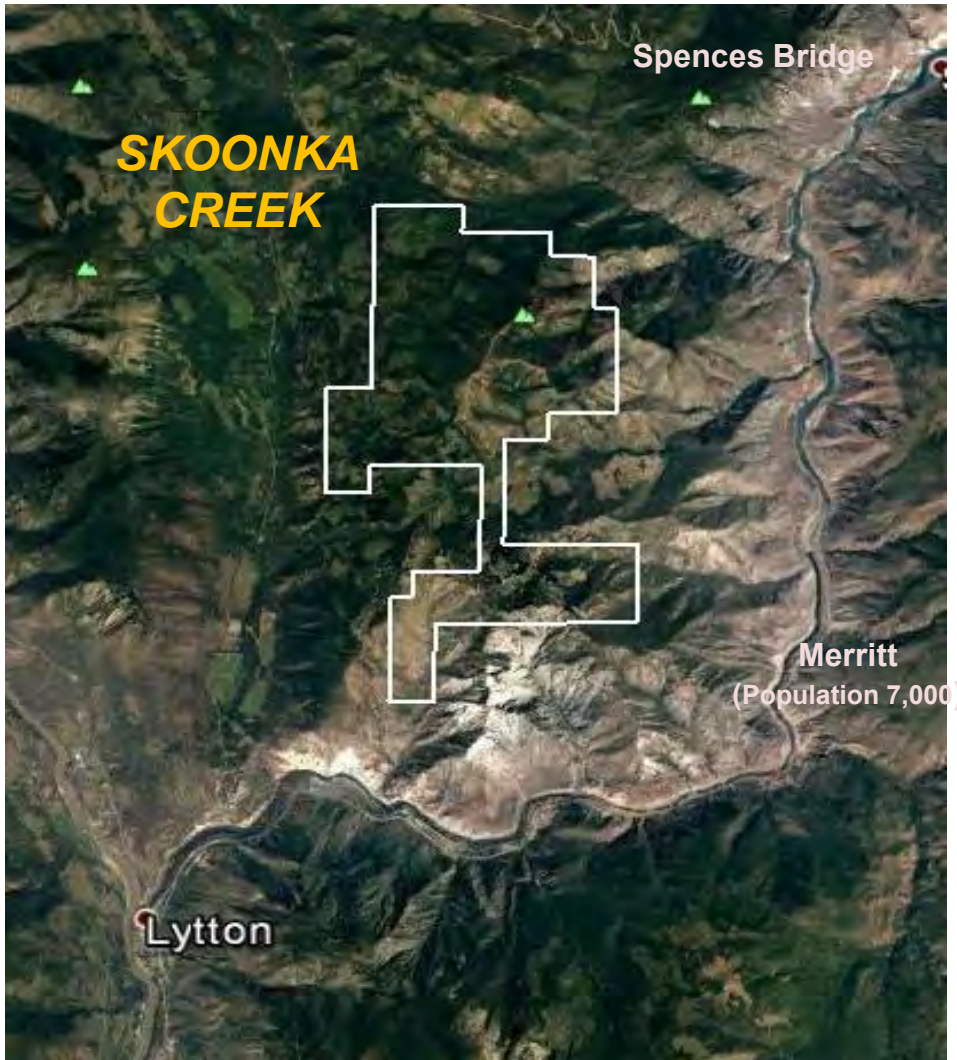
LOCATION



HISTORY – FRASER RIVER GOLD RUSH



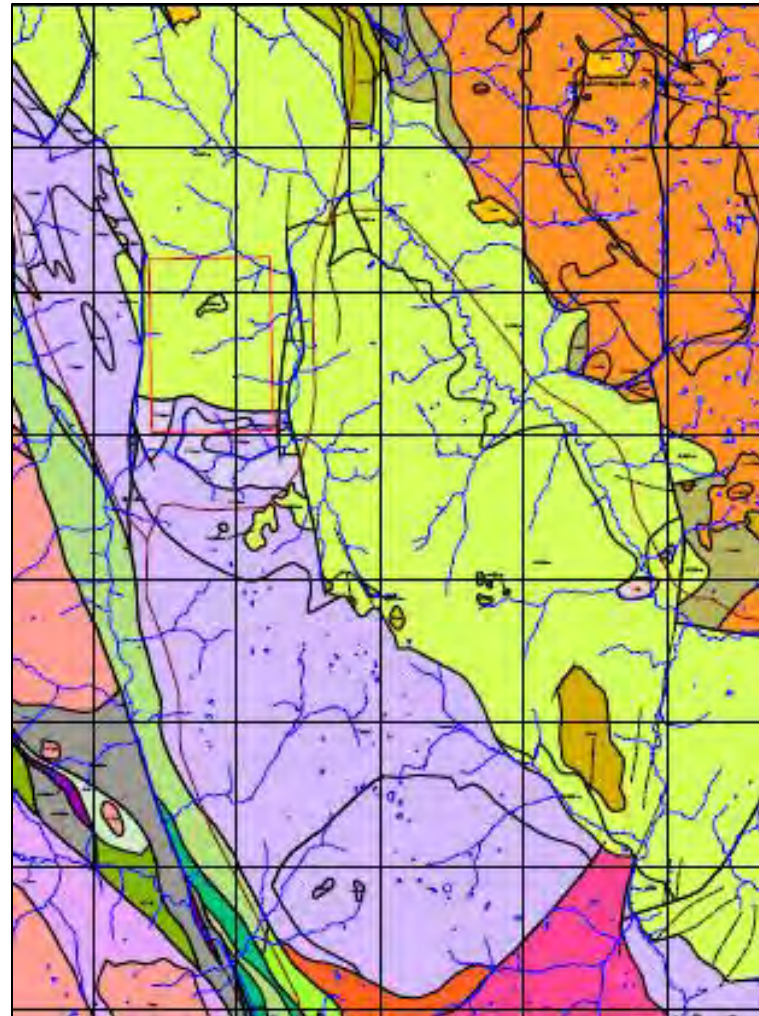
SKOONKA CREEK GOLD PROPERTY (100%)



- 3.5 hour drive from Vancouver
- 2,783 hectares
- Two styles of low sulphidation epithermal gold mineralization observed:
 - Multi-stage, massive, banded veins associated with breccia zones and intense proximal silica to distal argyric alteration
 - Narrow stockwork veinlets with disseminated pyrite, moderate silica and minor carbonate, limonite and clay alteration

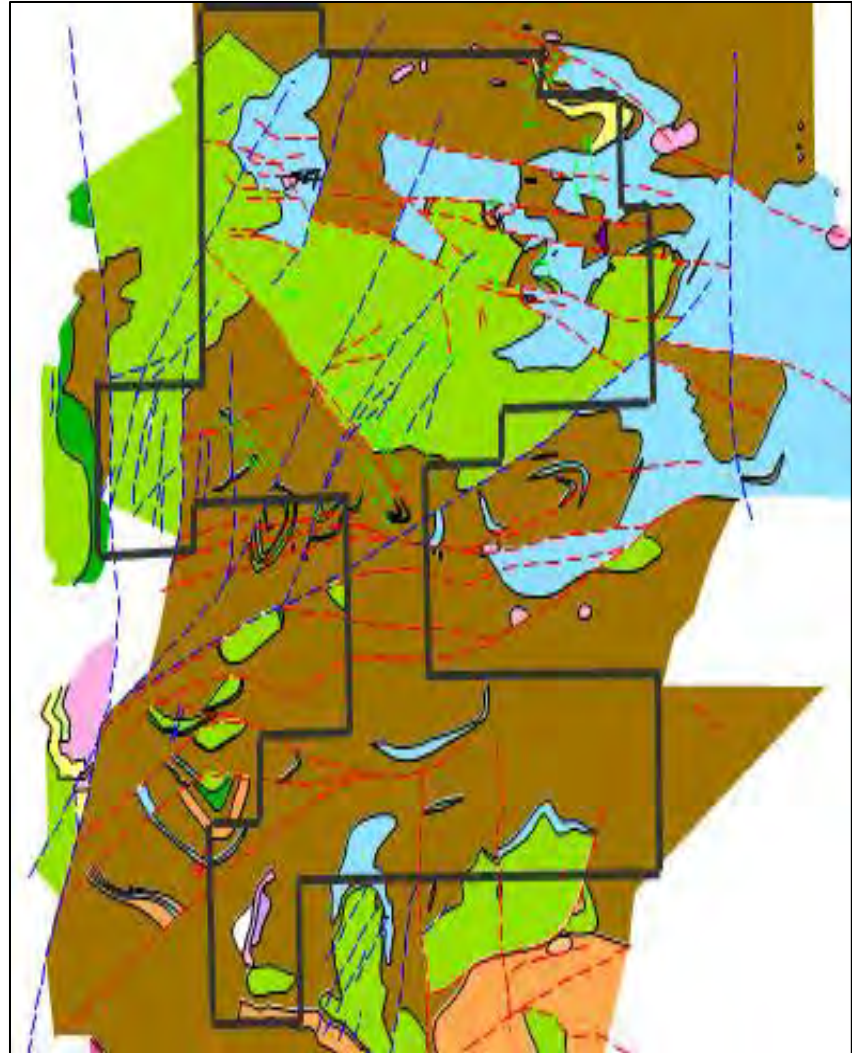
REGIONAL GEOLOGY

- Located in the southern Intermontane tectonic belt of the Canadian Cordillera
- The main lithologies include felsic volcanics, meta-sediments and felsic plutons
- The predominate structural features are normal faults that are typically sub-parallel to the Fraser fault
- The Spences Bridge Volcanic Belt (SBVB) lies unconformably above the Mt. Lytton Complex to the south
- Major deposits in the region include Highland Copper and Craigmont



REGIONAL GEOLOGY

- The Cretaceous **Spences Bridge Group** volcanics underlie the property
- Two formations: **Spilus** overlies the **Pimainus**
- Spilus consists of andesite flows (**green**) and the Pimainus is tuffs (**brown**) and fine grained andesite flows (blue) with minor sediments
- Epithermal mineralization discovered to date is restricted to the Pimainus



MINERALIZATION STYLES



- Mineralization discovered to date is limited to the upper Pimainus Formation and is associated with NE-ENE trending normal faults. Typically the mineralization occurs 100-300m below the Pimainus/Spius contact which is interpreted to be a paleo-surface
- Two styles of low sulphidation epithermal gold mineralization observed:
 - Multi-stage, massive, banded veins associated with breccia zones and intense proximal silica to distal argillic alteration
 - Narrow stockwork veinlets with disseminated pyrite, moderate silica and minor carbonate, limonite and clay alteration

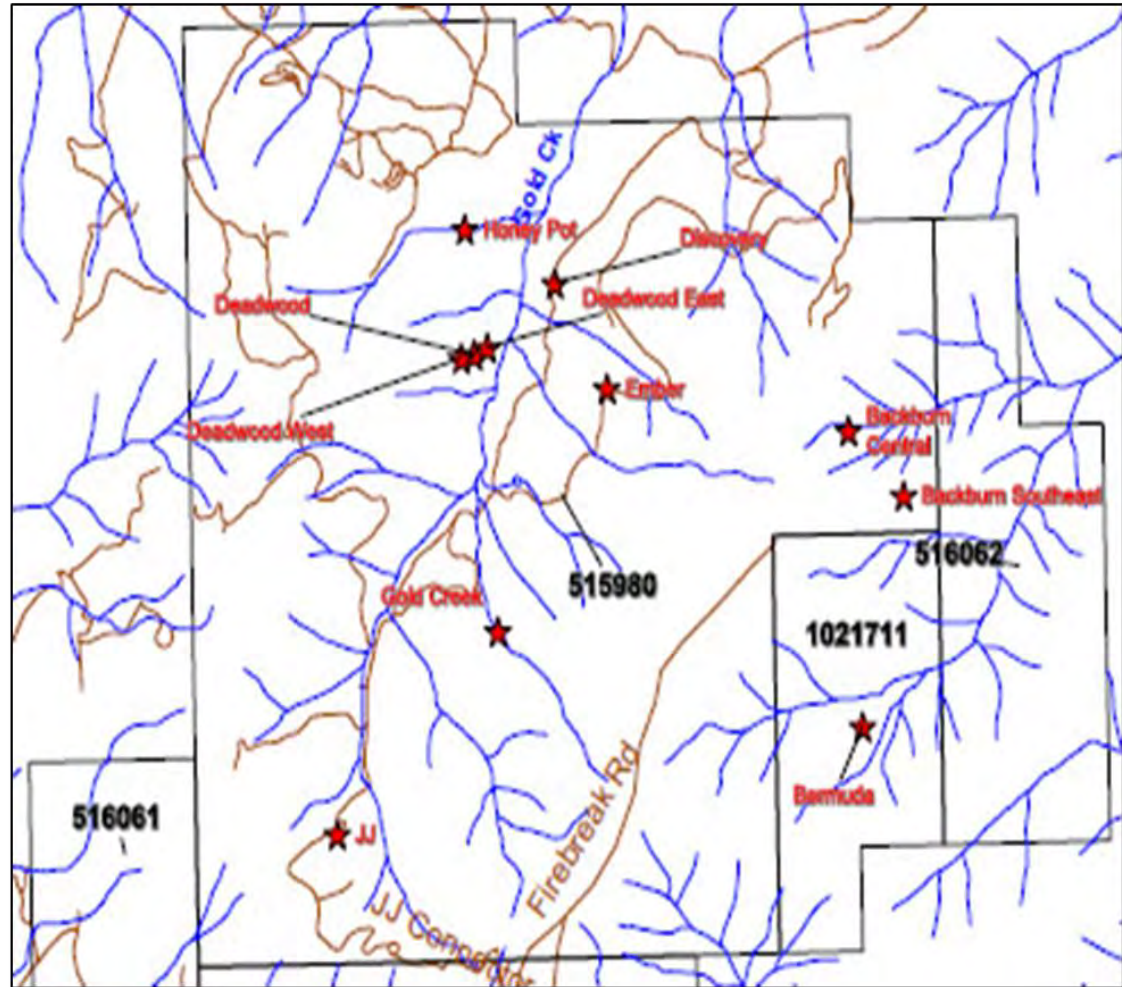
EXPLORATION SUMMARY

Year	Mapping	Sampling				Geophysics		Trenching	Drilling
		silt	soil	rock	core	Airborne	Ground		
2003		41	14	22					
2004		8	417	41				hand	
2005	1:10,000	29	3,588	224	824		12.4 km (mag/vlf)	43.5 m	1,258 m (11 holes)
2006	1:10,000	76	4,533	1,624	2353	207 km (Dighem)	33.7 km (mag)/5.5 km (IP – 5 lines)	318 m (soil)	4,403 m (21 holes)
2007	1:10,000/1:2,500		2,262	783		580 km (Dighem)	33.9 km (mag)	432 m	3,147 m (13 holes)
2013	1:2,500		64						
2015	1:2,500		221	15					
Total		154	11,099	2,709	3,177	787 km	86 km	795 m	8,808 m (45 holes)

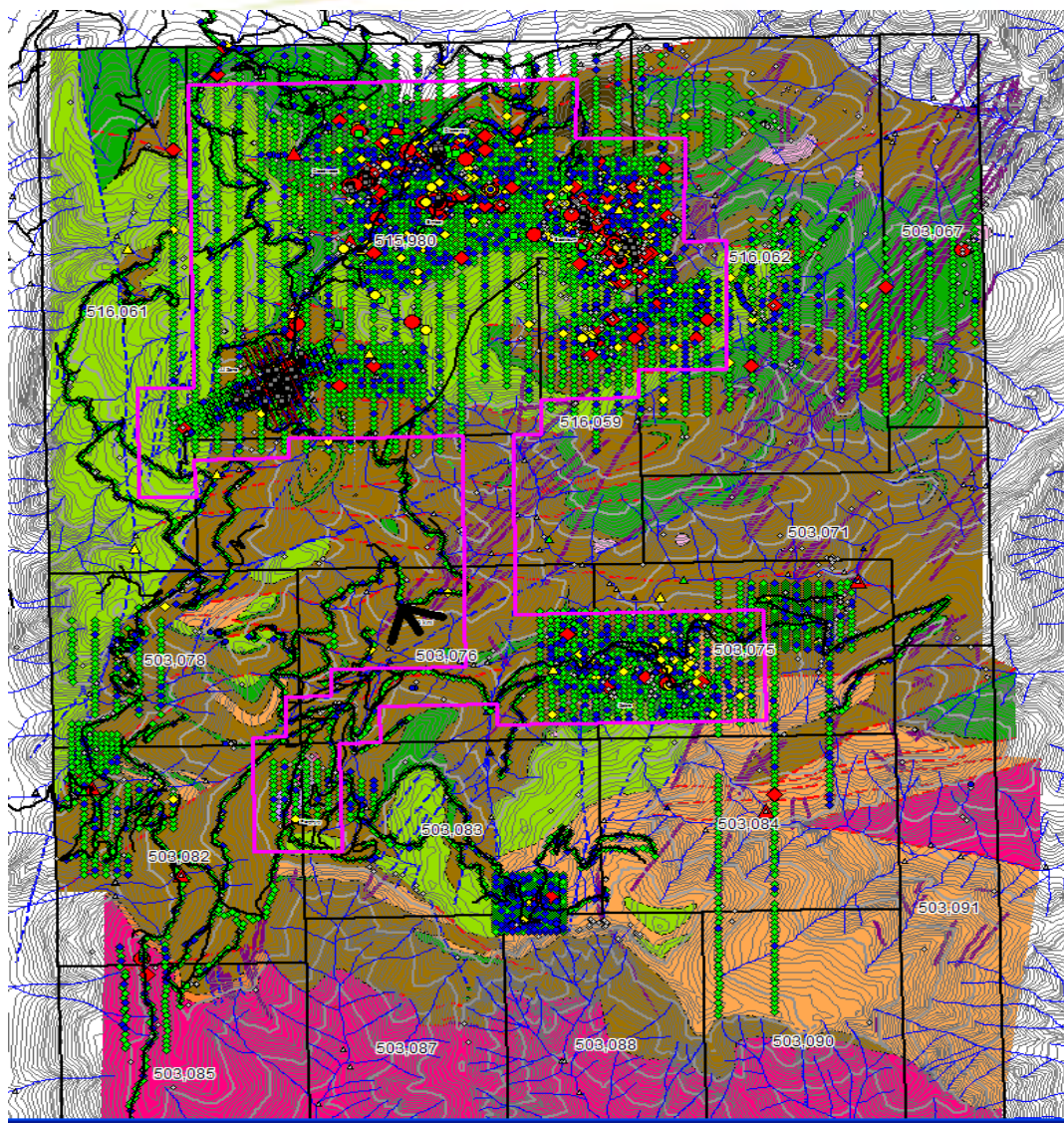
- 2003-2004 work completed by Almaden Minerals
- 2005-2015 work completed by Strongbow Exploration
- Dighem surveys included mag, EM and radiometrics

SHOWING LOCATIONS

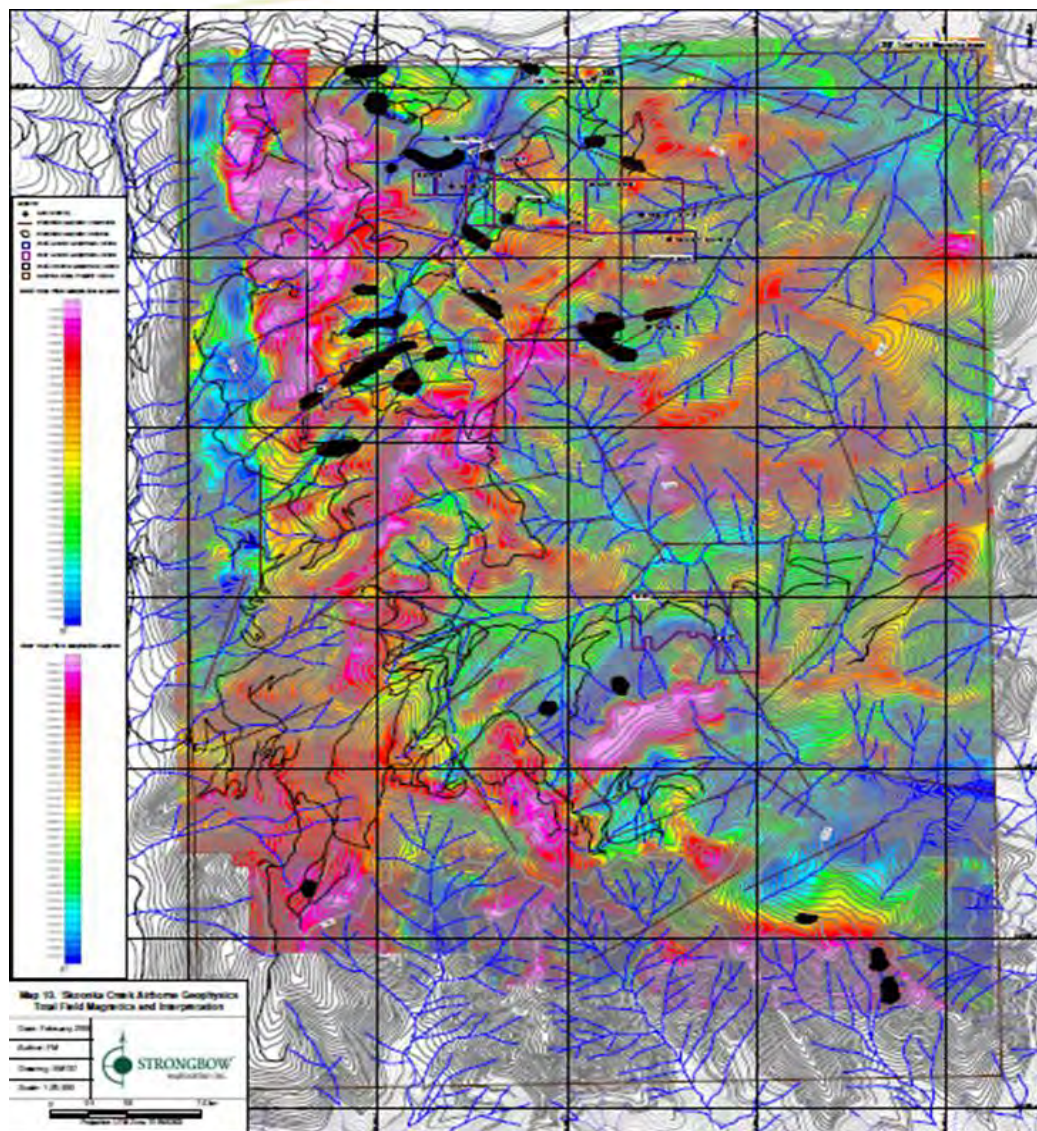
- 2003: JJ and Discovery zones
- 2006: Deadwood, Ember, Blackburn, Bermuda, Zebra and Porphyry zones
- Best results to date: **20.2 g/t Au over 12.8m at the JJ zone**



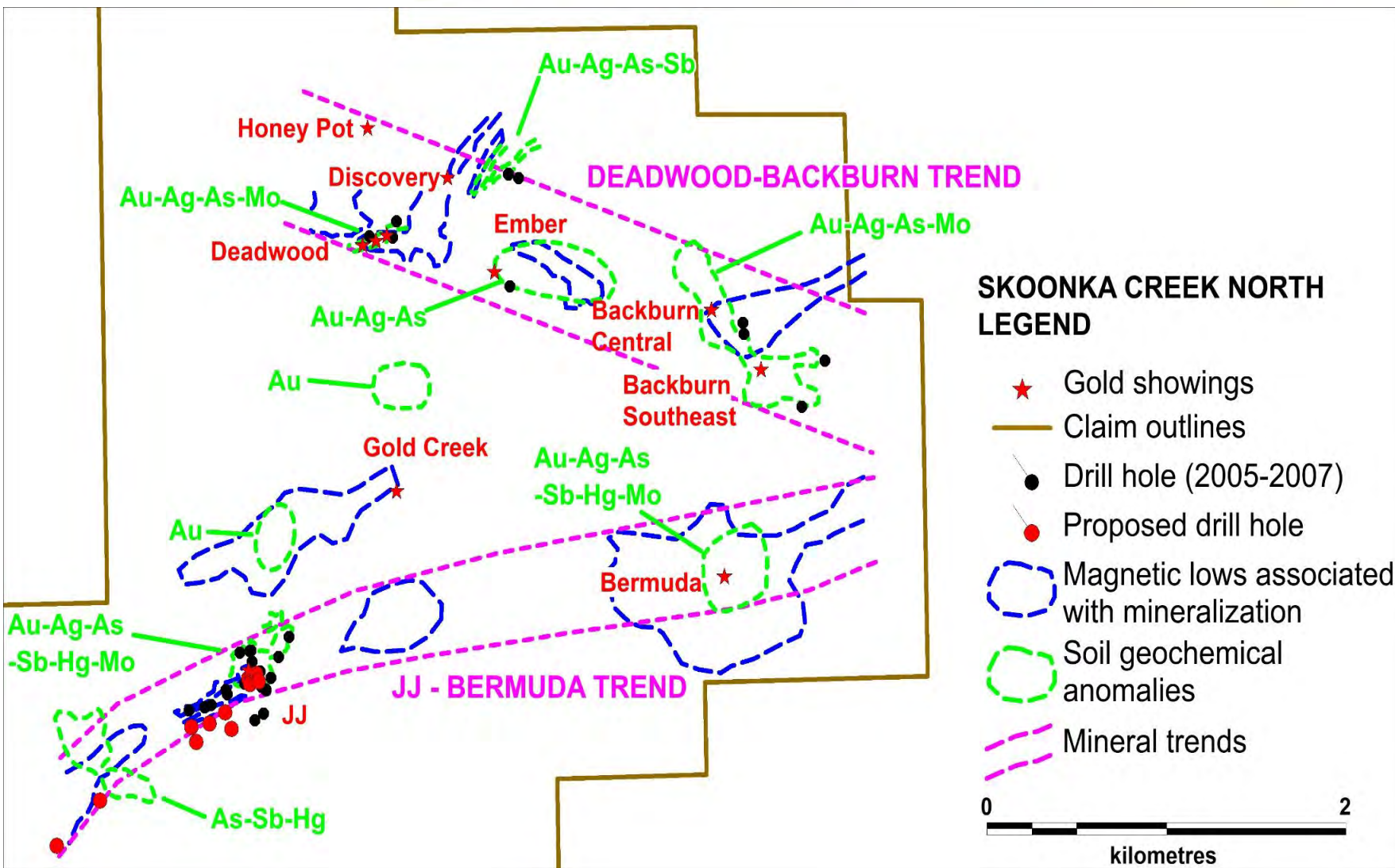
SOIL GEOCHEMISTRY (Au) WITH GEOLOGY



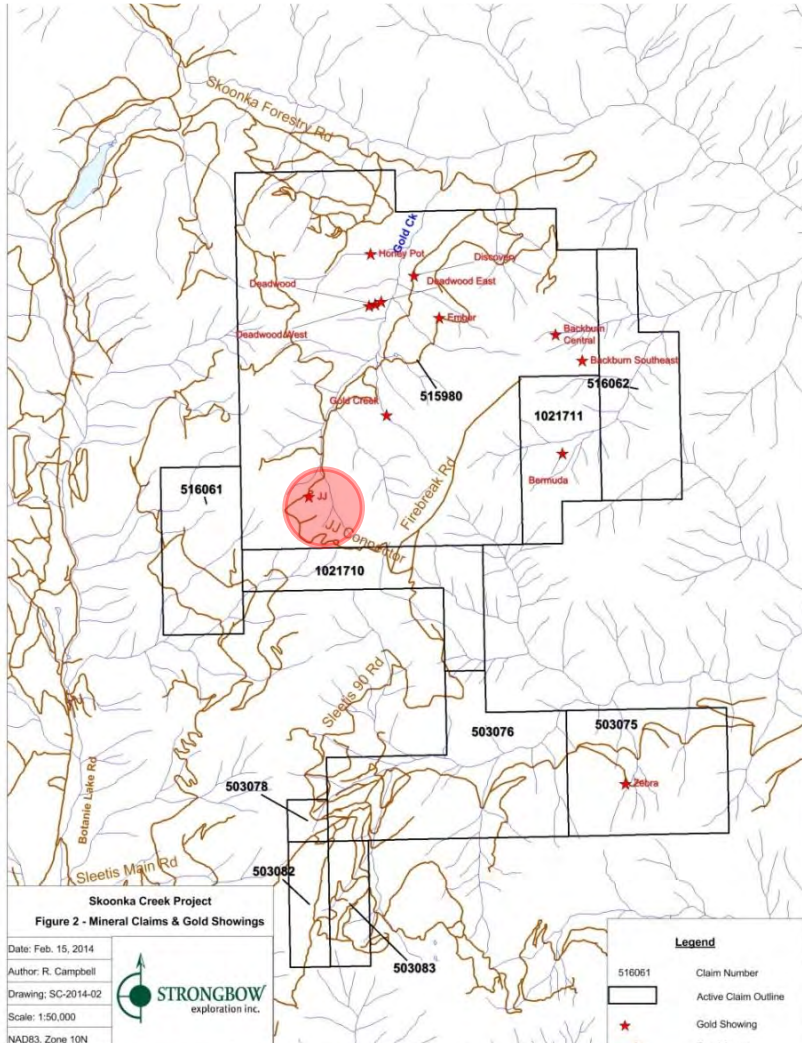
AIRBORNE GEOPHYSICS - MAGNETICS



Showings with Soil Anomalies, Magnetic Lows and Drilling



JJ ZONE



- The JJ showing is a fault zone comprised of 2 main quartz veins traced on surface for 175m
- The zone has an intensive alteration envelope proximal to the quartz veins that is between 4-20m thick and highly fractured
- The zone strikes at 45° - 60° dips 50° - 60° to the SE
- 29 DDH's defined a zone over a strike length of 750m to a depth of 250m - best drilling results are **20.2 g/t Au and 7.4 g/t Ag over 12m**
- Coincident magnetic low and soil anomalies targeted the drilling
- Drilling results indicate the zone is open along strike in both directions and at depth, and the soil geochem also suggest potential to extend the zone to the east and west
- Easily accessible on FSR road

JJ ZONE – DISCOVERY TRENCH



Jodi vein
42.6 g/t Au

Jan vein
17.9 g/t Au

DRILLING HIGHLIGHTS

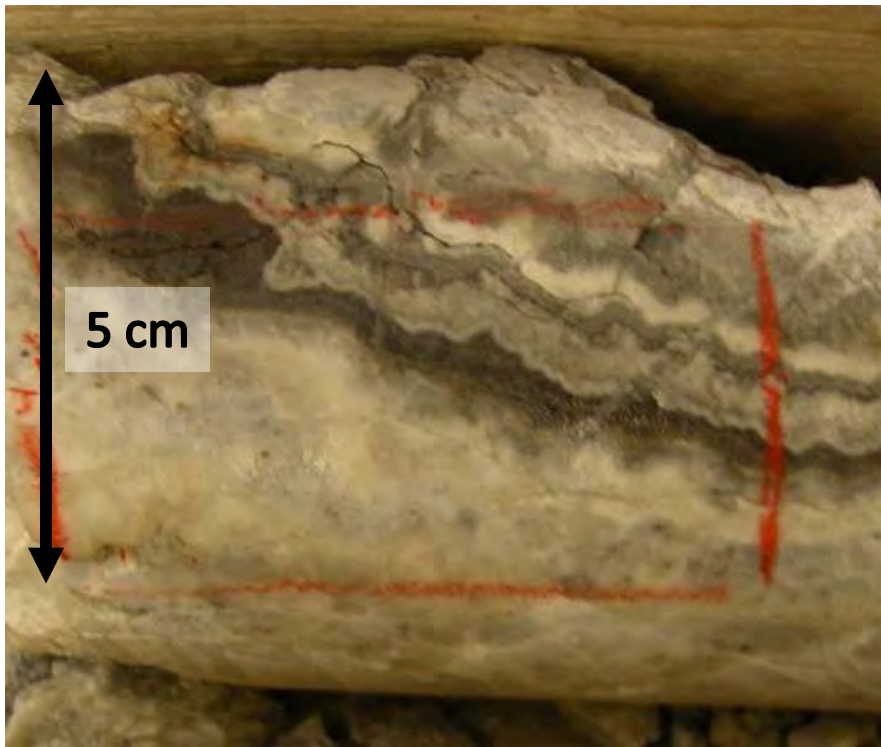
- SC05-008 returned **12.8m** of **20.2 g/t** gold and **14.2 g/t** silver including, **2.9m** grading **51.1 g/t** gold and **46.9 g/t** silver; also including, **0.75m** of **117.1 g/t** gold and **49.2 g/t** silver
- SC05-007 returned **3.3m** of **26.8 g/t** gold and **28.8 g/t** silver including, **1.57m** of **54.5 g/t** gold and **56.75 g/t** silver
- SC07-038 returned **4.67m** of **3.39 g/t** gold and **2.42 g/t** silver
- SC05-006 returned **4.1m** of **7.48 g/t** gold and **4.15 g/t** silver including, **1.25m** of **16.2 g/t** gold and **5.76 g/t** silver
- SC05-003 returned **18.m** of **1.38 g/t** gold and **1.61 g/t** silver including, **1m** of **16. g/t** gold and **8.6 g/t** silver



Quartz vein pictured returned **54.5 g/t Au** over **1.57m**

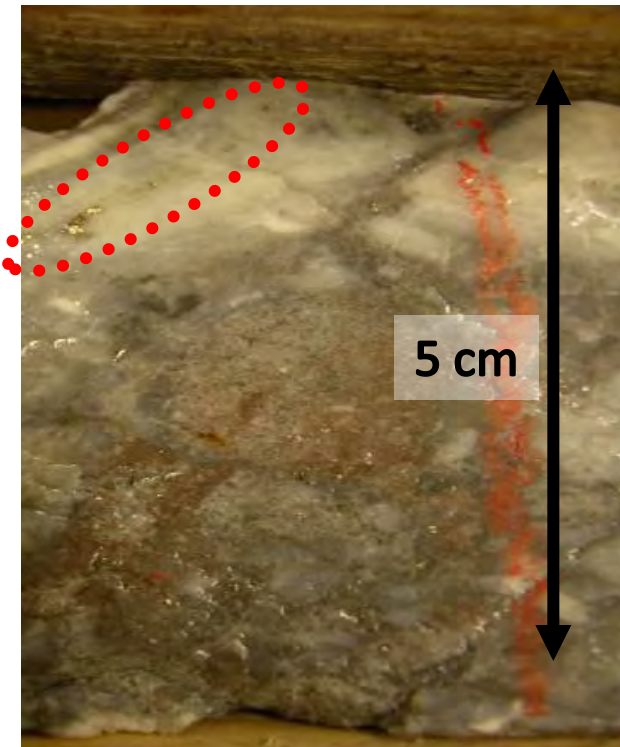
JJ Zone – Quartz Veining in Drilling

54.5 g/t Au over 1.57 m



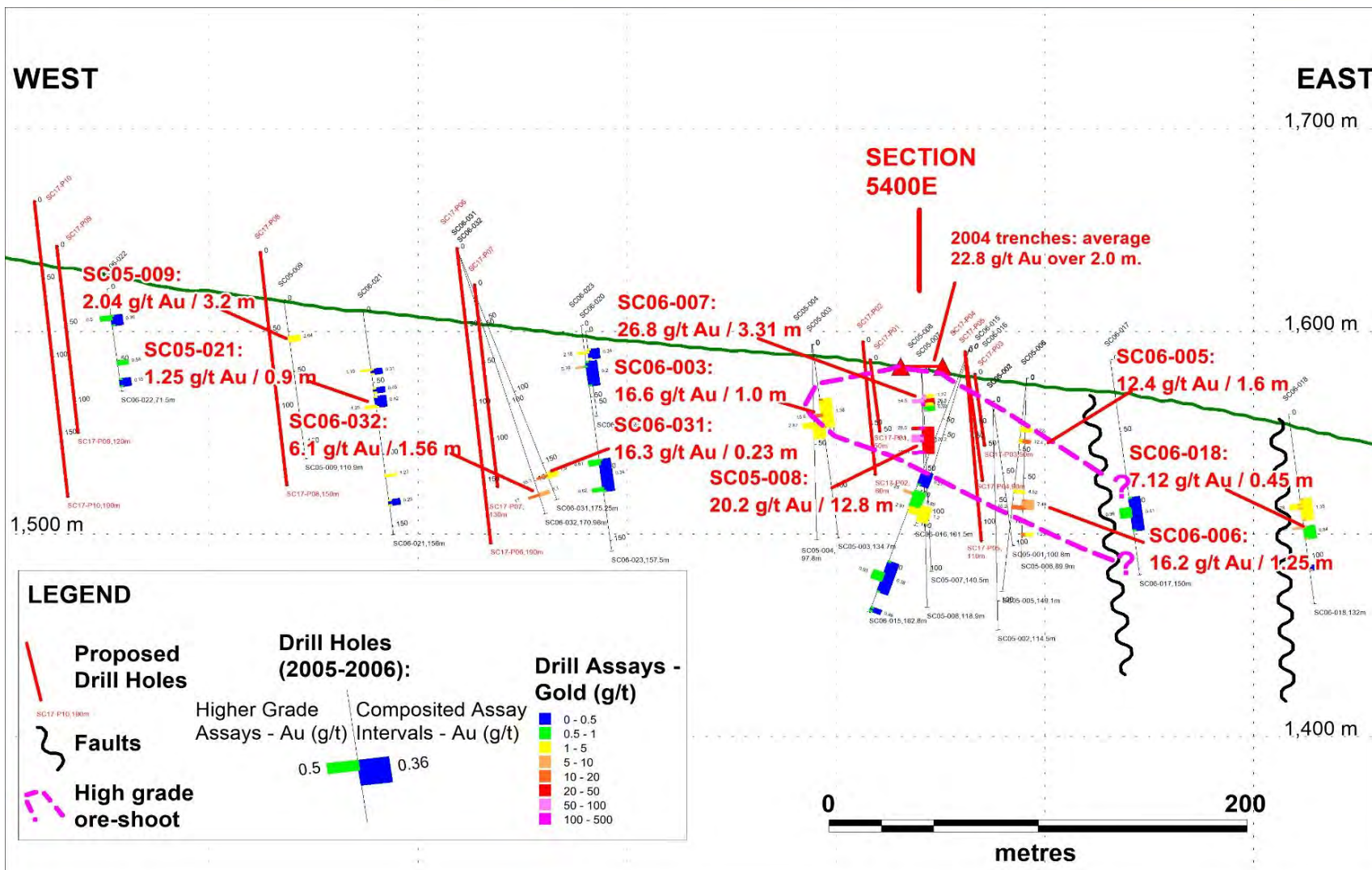
- Classic epithermal textures; evidence for fluid flow & boiling (DDH SC05-007)

238 g/t Au over 0.38 m

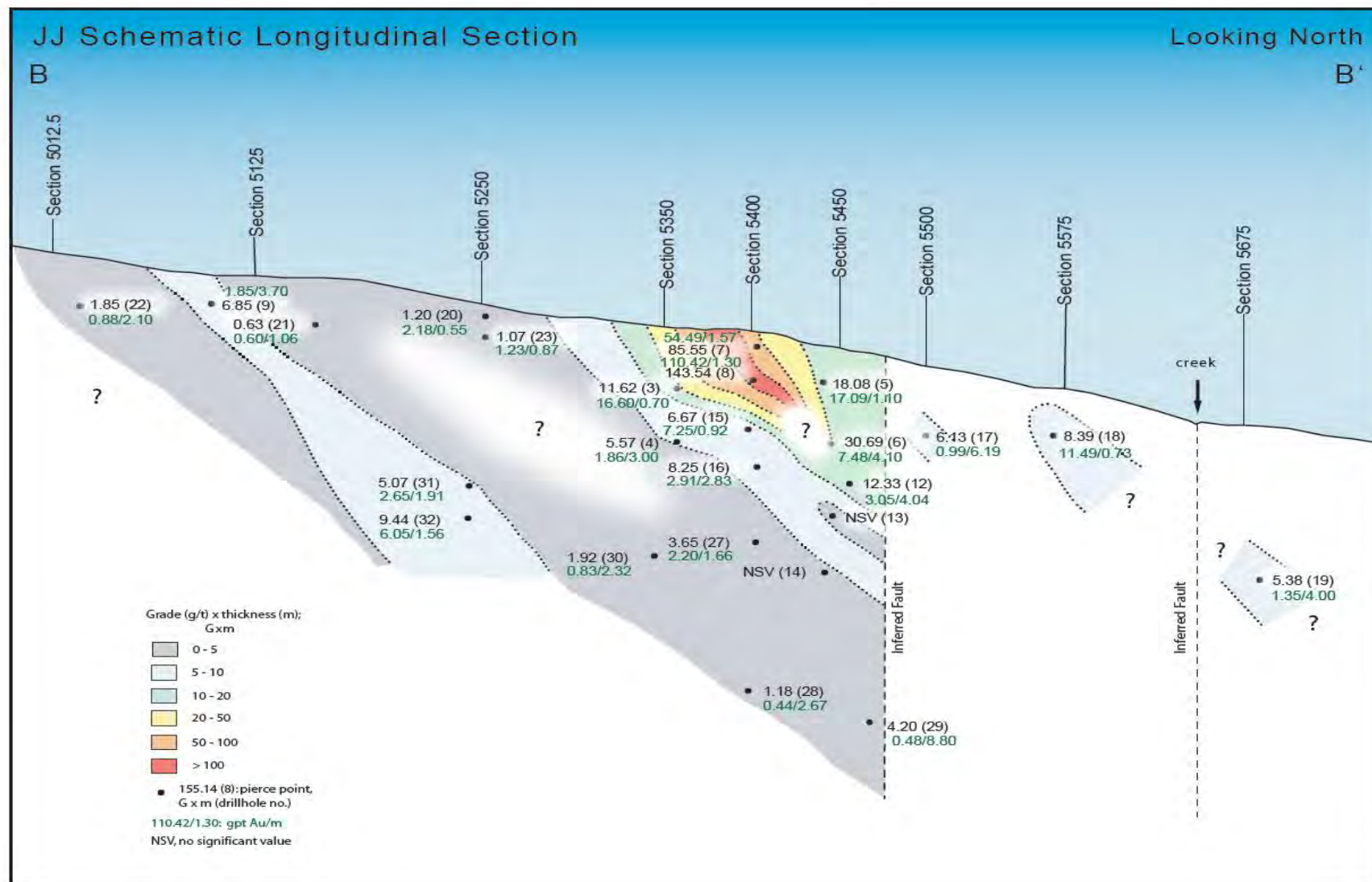


- Precipitation of coarse gold (DDH SC05-008)

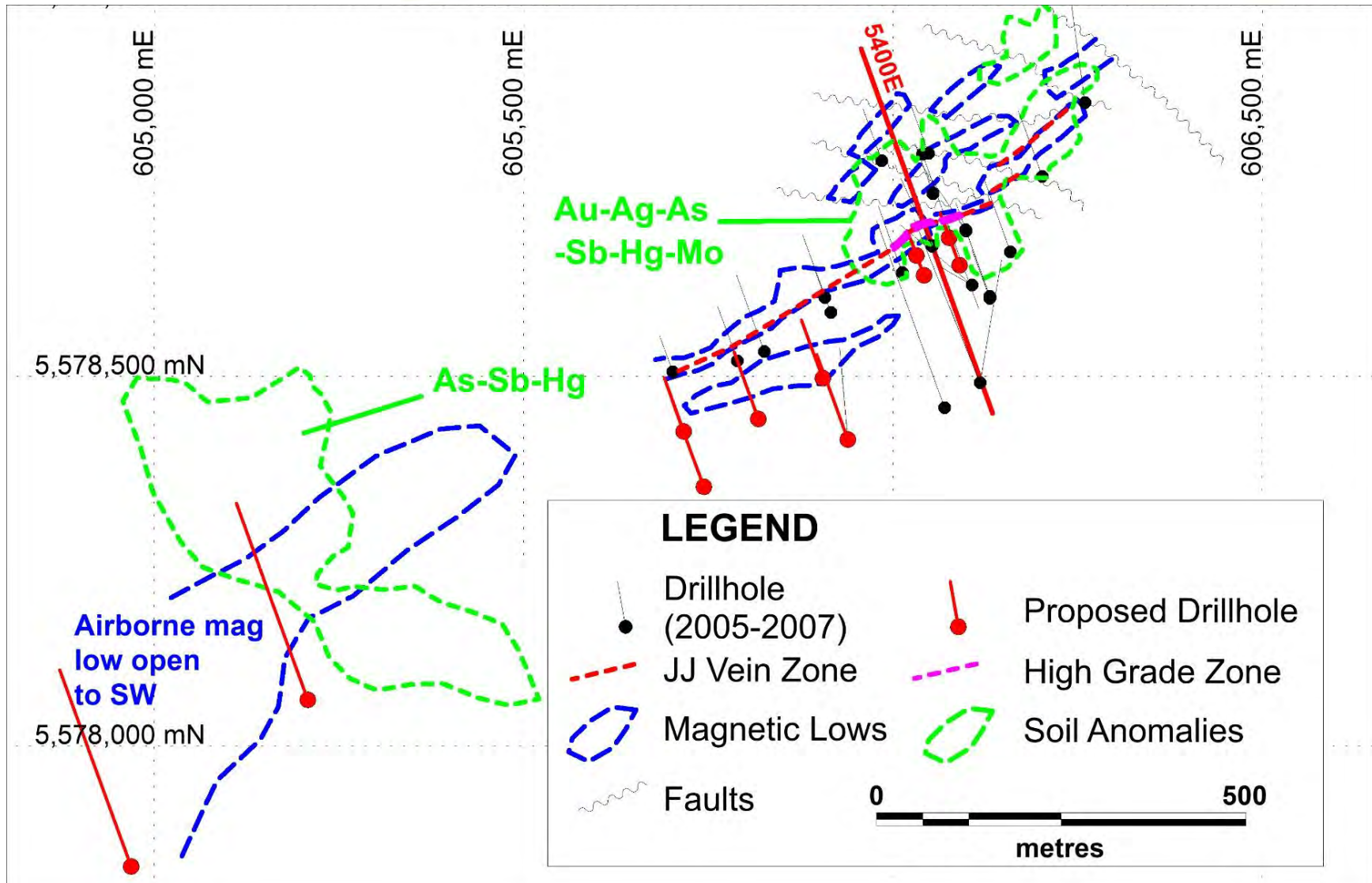
JJ Zone –Longitudinal Section with Assays and Proposed Drilling (Looking North)



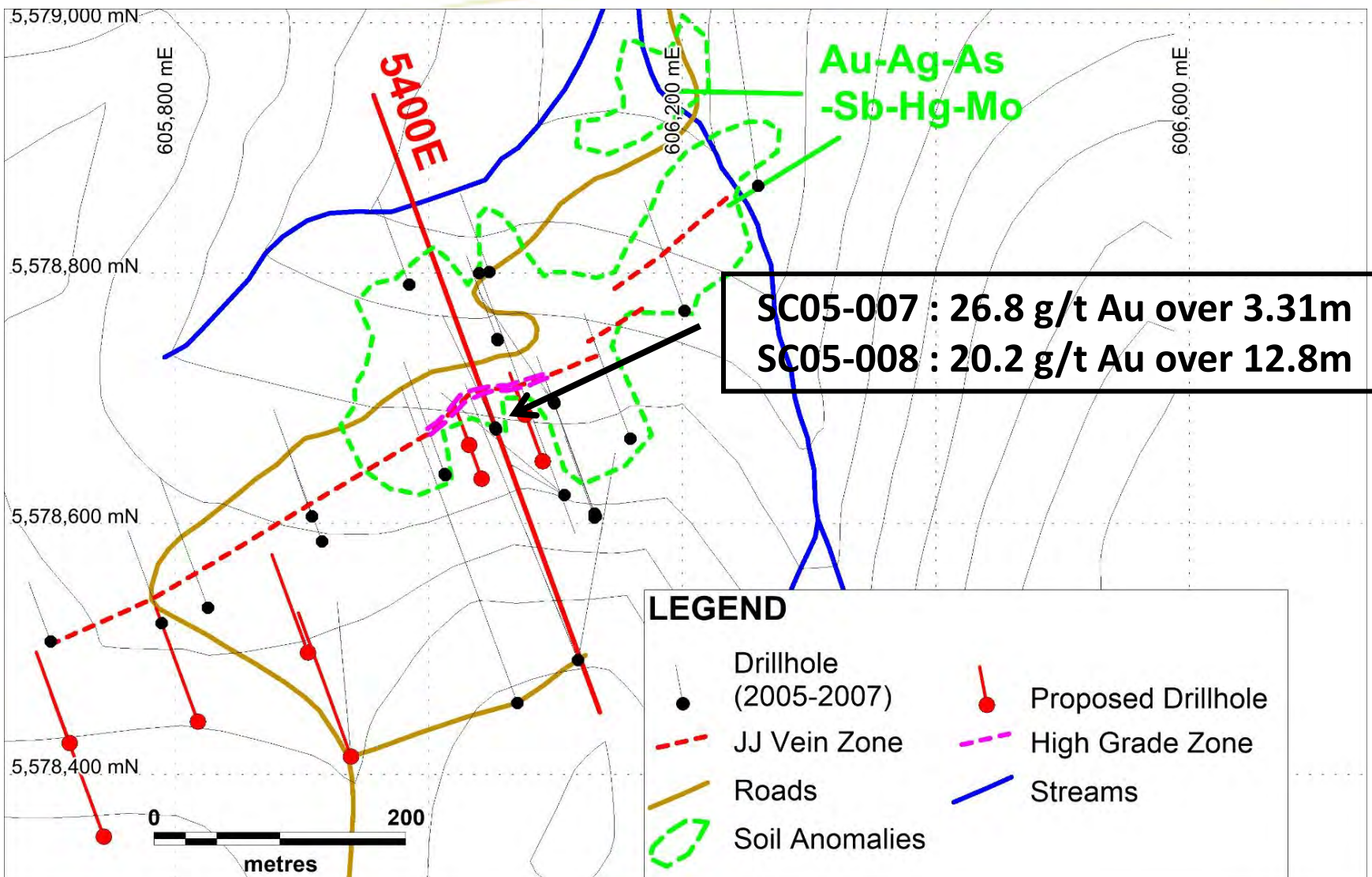
JJ Zone –Longitudinal Section (Looking North) g/t Au /m



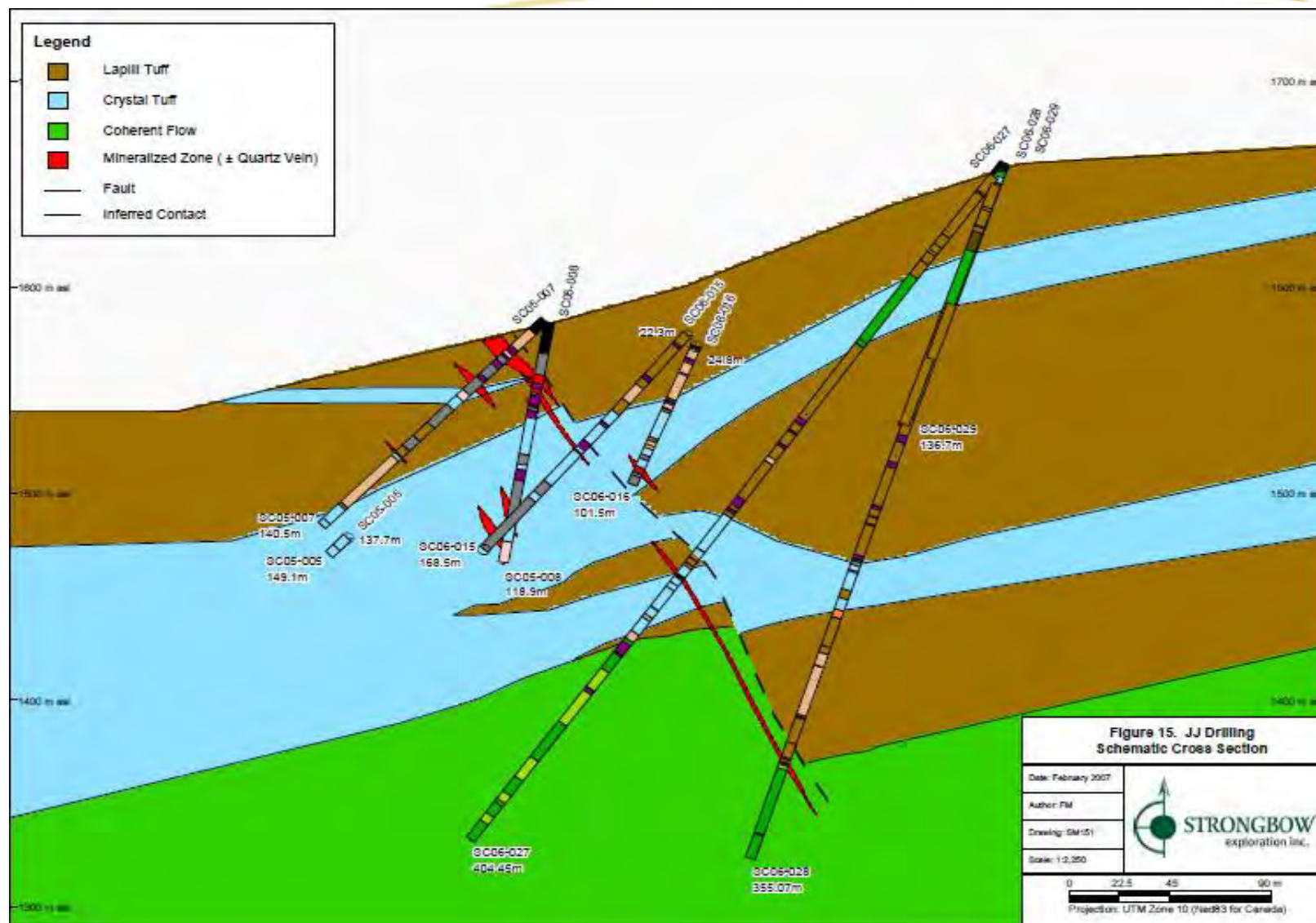
JJ Zone –Magnetics, Soil Geochem and Proposed Drilling



JJ Zone –Plan of Existing and Proposed Drillhole Locations with Soil Anomalies



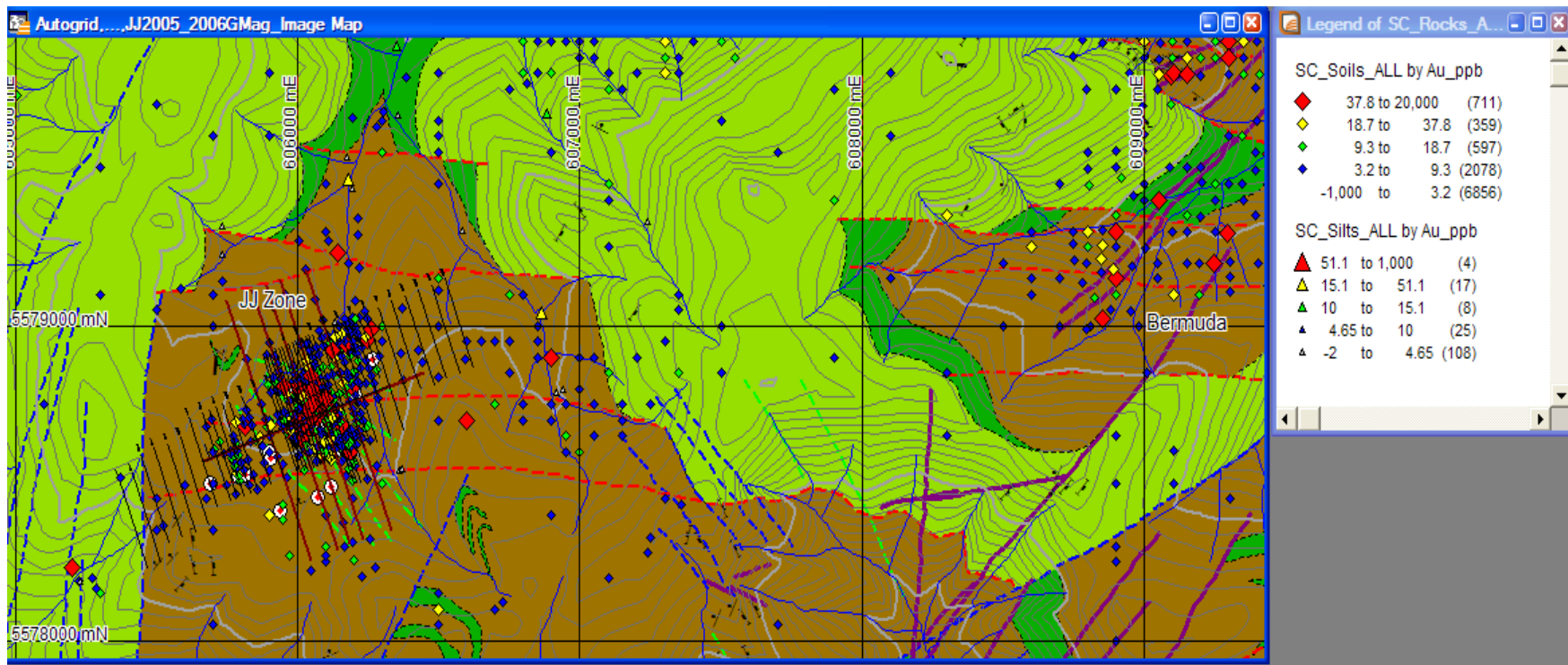
JJ Zone – Detailed Geology Cross Section (Section 5400E, Looking North-East)



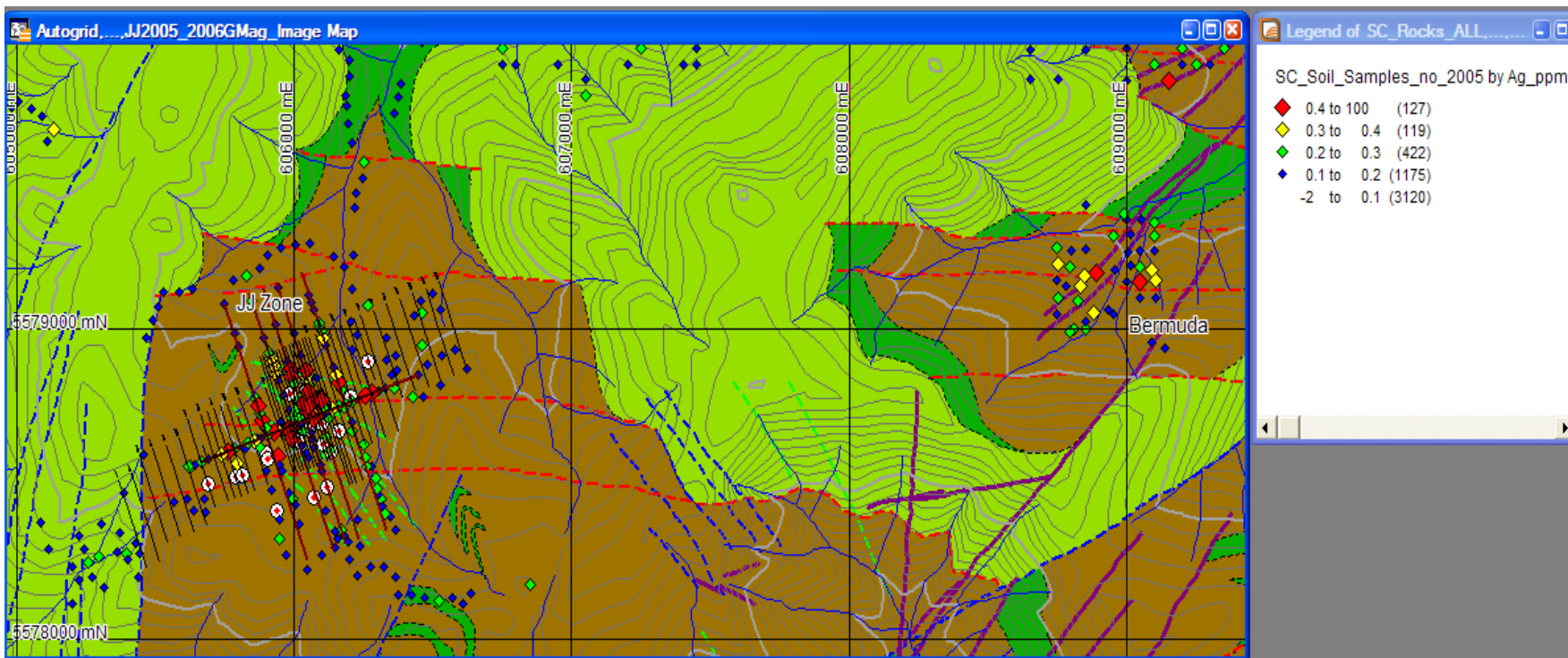
JJ Zone – Soil Geochemistry

- The JJ zone is well defined by soil geochemistry - pathfinder elements include Au, Ag, As, Hg, and Sb
- Soil sampling has identified three areas of interest outside the JJ zone for follow up:
 1. 900m west of the JJ zone. This area is anomalous in As, Hg and Sb, and to a lesser extent Au and Ag. A small program was conducted in 2015, the results of which support the area's prospectivity.
 2. 2.5km east of the JJ zone. The area known as the Bermuda zone, returned highly anomalous soil results for all elements.
 3. The zone between the JJ and Bermuda zones. Weak and localized Au and As anomalies occur in an area underlain by Spius Fm flows which could mask mineralization in the underlying Pimainus Fm tuffs

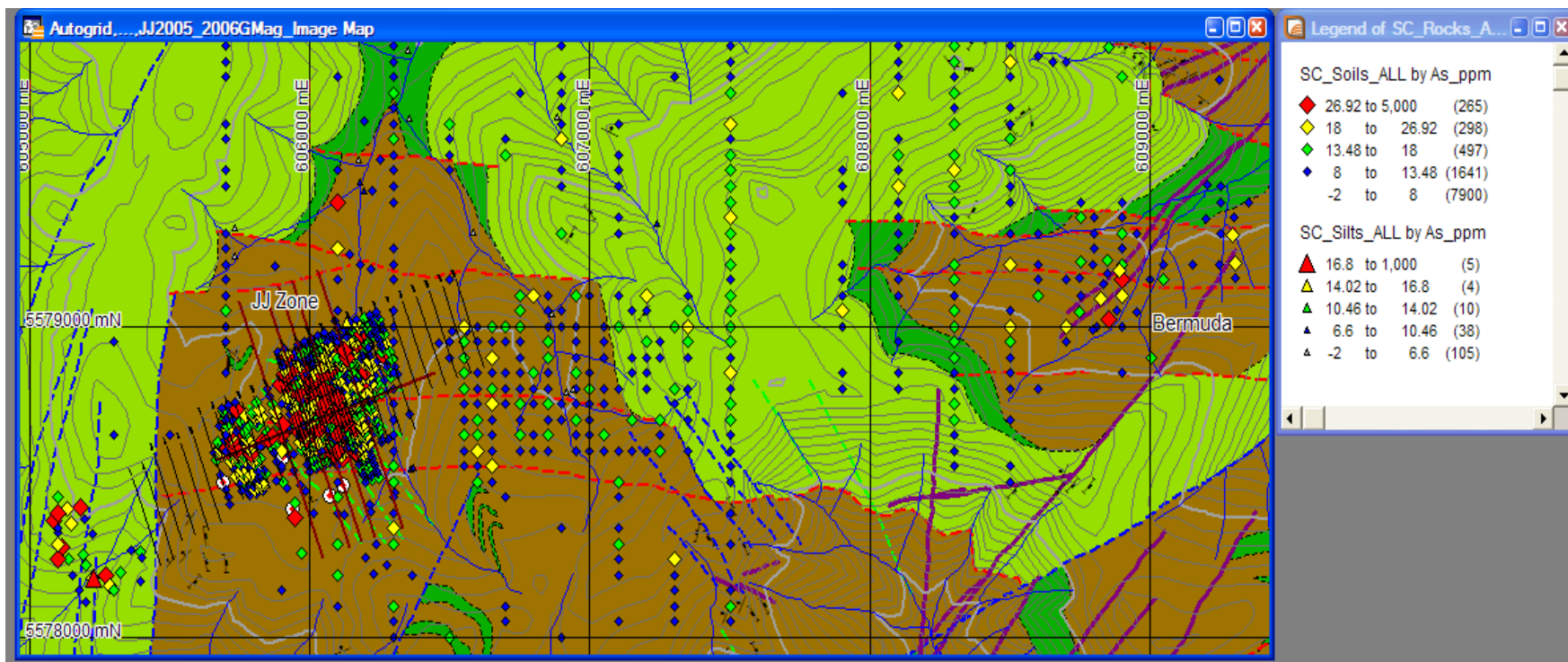
JJ + Bermuda Zones - Geology and Au in Soils



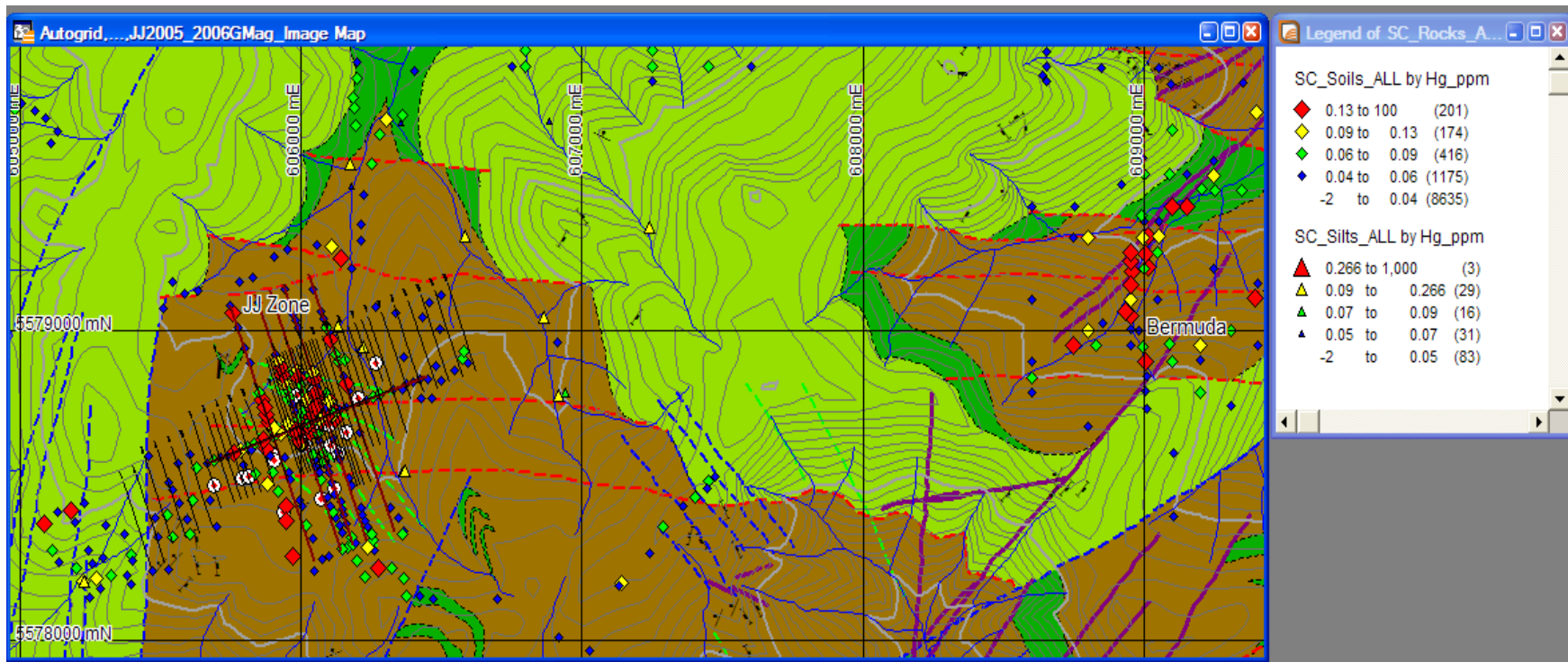
JJ + Bermuda Zones – Ag in Soils



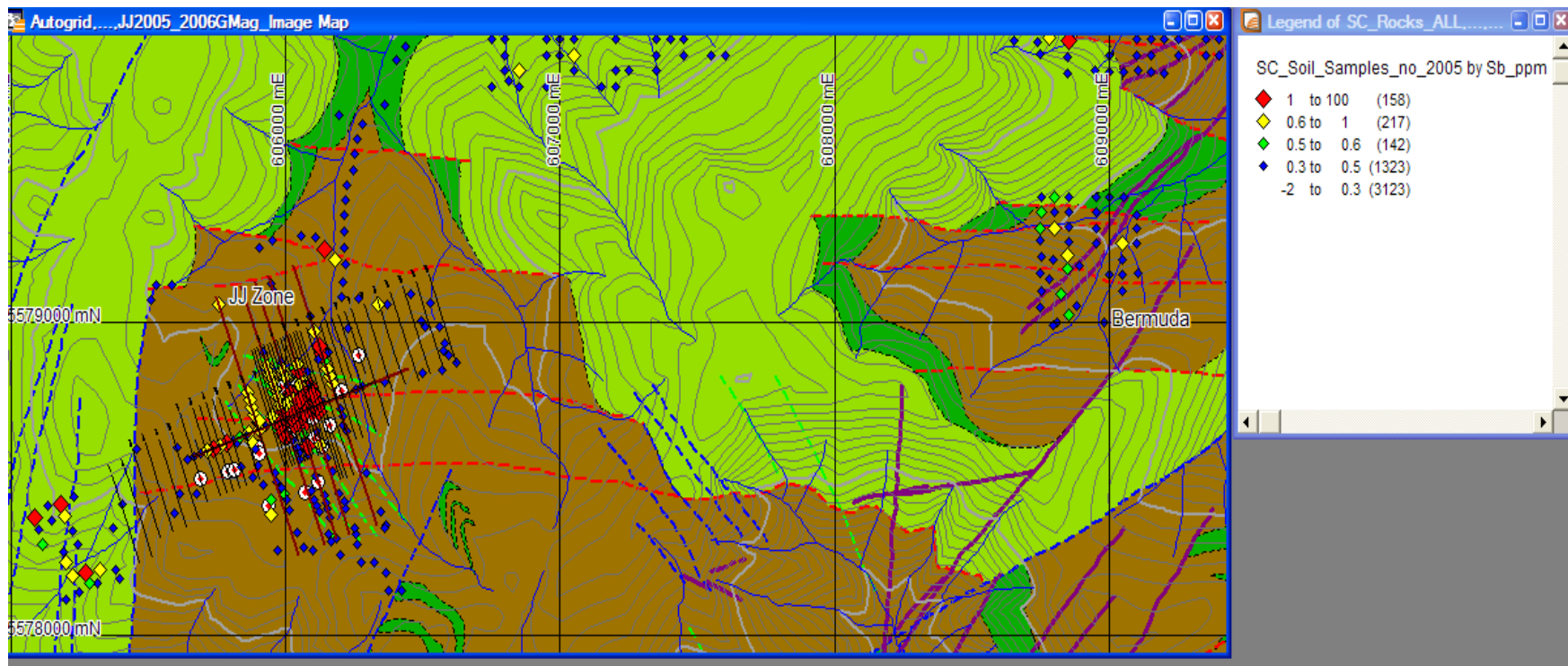
JJ + Bermuda Zones – As in Soils



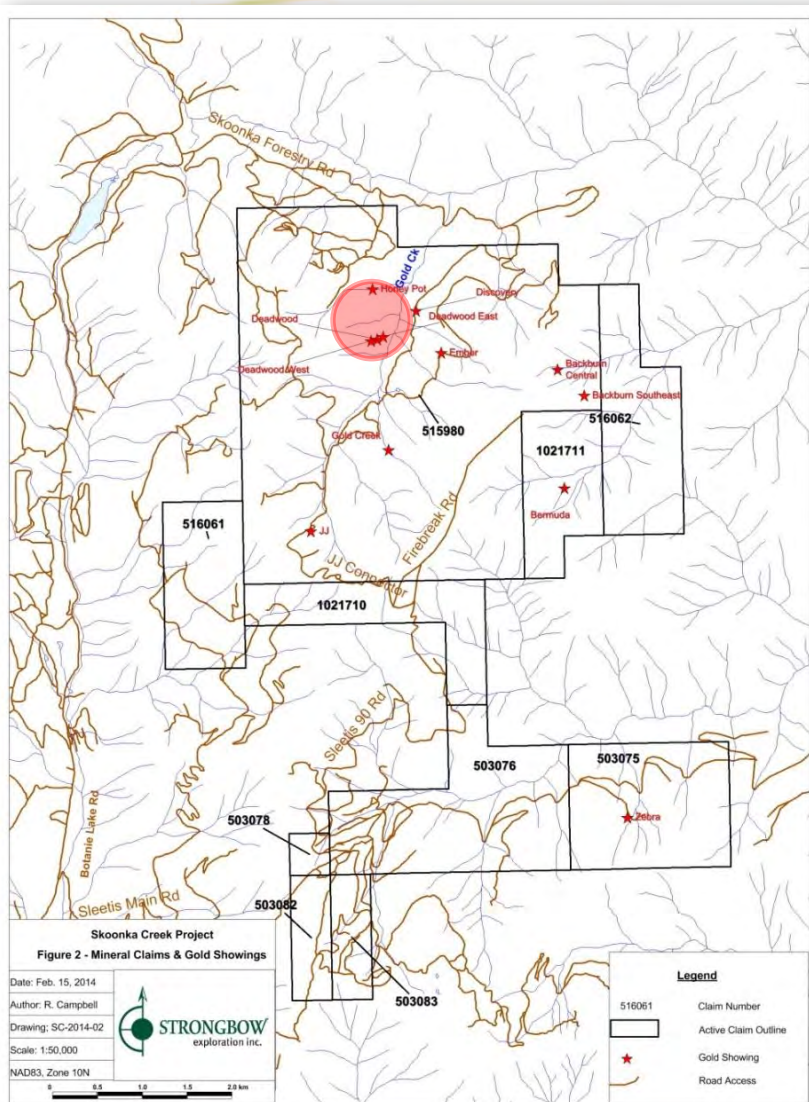
JJ + Bermuda Zones – Hg in Soils



JJ + Bermuda Zones – Sb in Soils



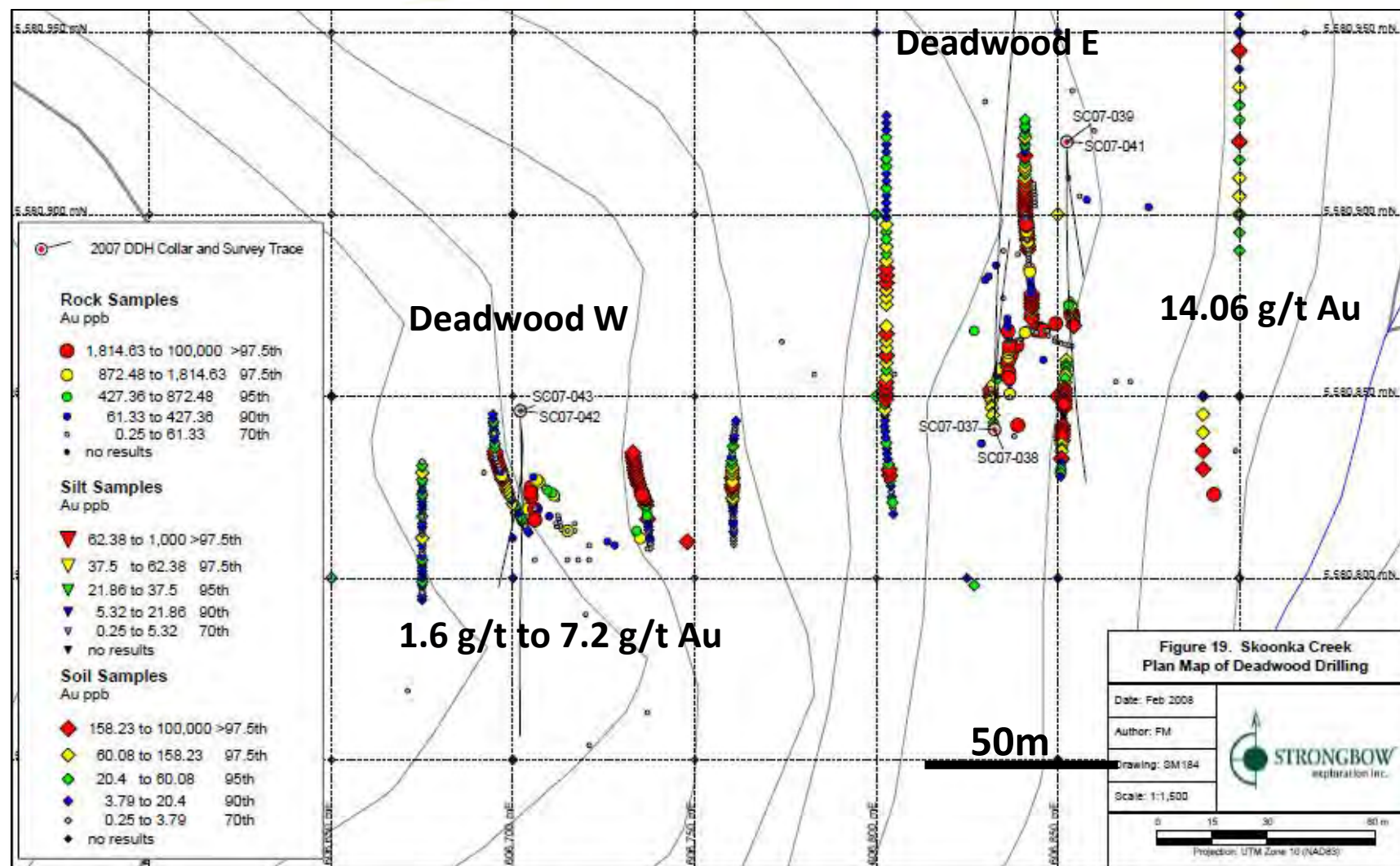
DEADWOOD ZONE LOCATION



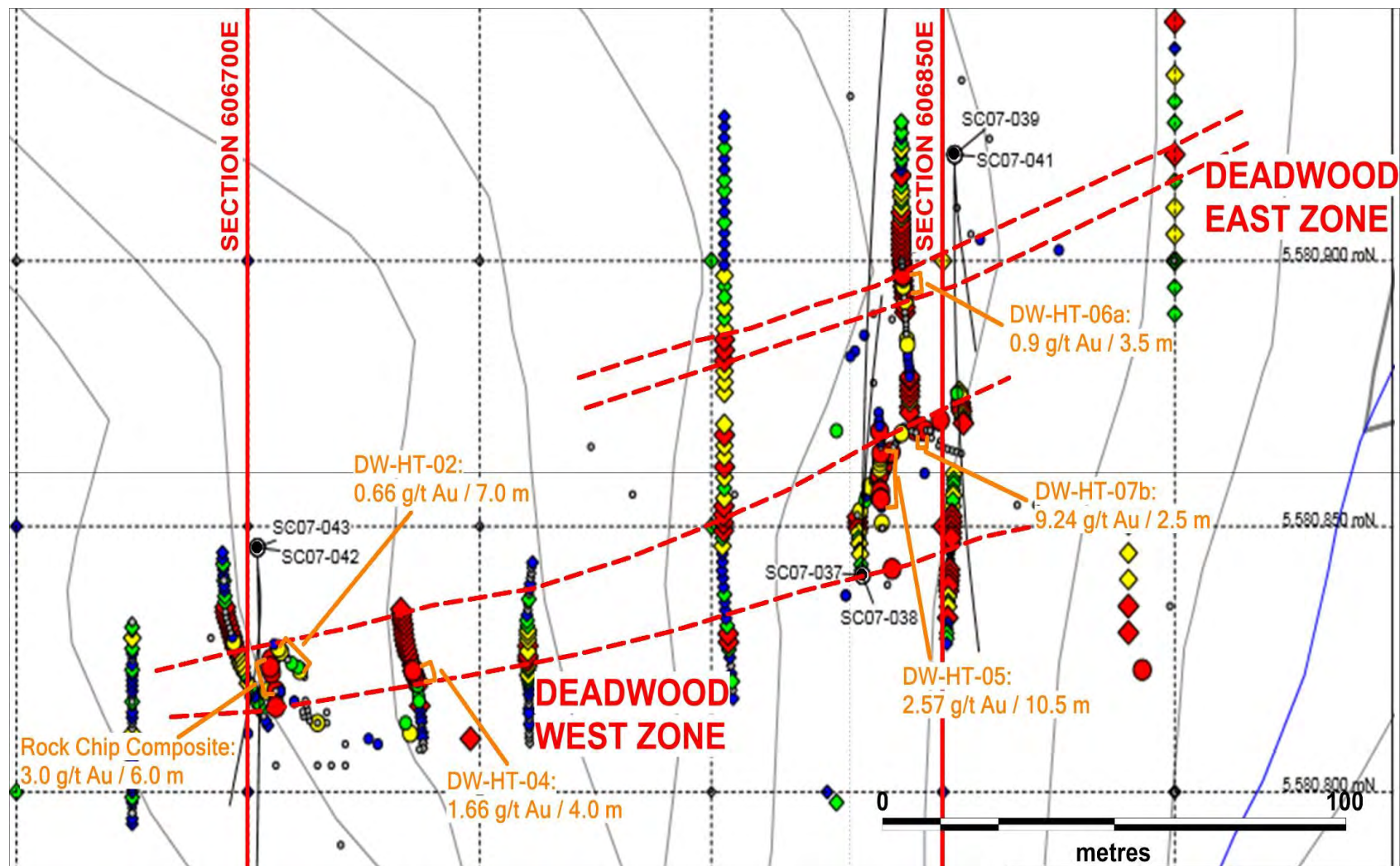
DEADWOOD ZONE SUMMARY

- Two zones were identified through soil sampling – East and West
- Interpreted to be a low sulphidation epithermal system in andesite flows at the Spius/Pimainus contact, however porphyry intersected in the western drill hole may also be an influence
- Mineralization includes:
 - quartz-carbonate veining with local vein breccia and limonite alteration
 - Blebby silica-carbonate alteration spatially related to the veining
- 11 soil trenches and 7 rock trenches were excavated – highest assays were from a rock sample of **14.06 g/t Au** and a chip sample of **9.2g/t Au over 2.5m**
- 6 drill holes - the best drill results were from hole DSC07-38: **3.39g/t Au and 2.42 g/t Ag over 4.67m**

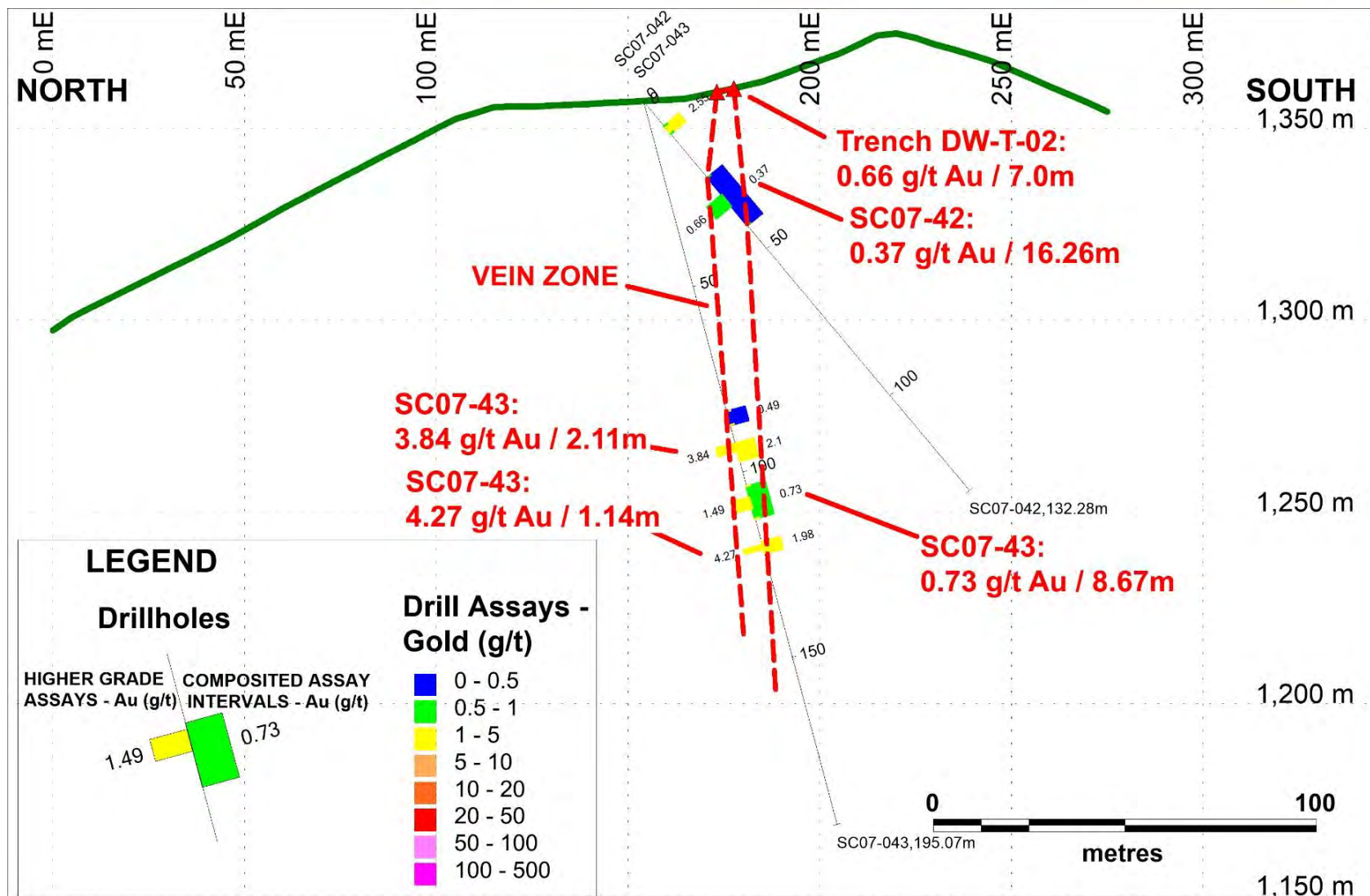
Deadwood Drilling and Rock/Soil Sampling - Au



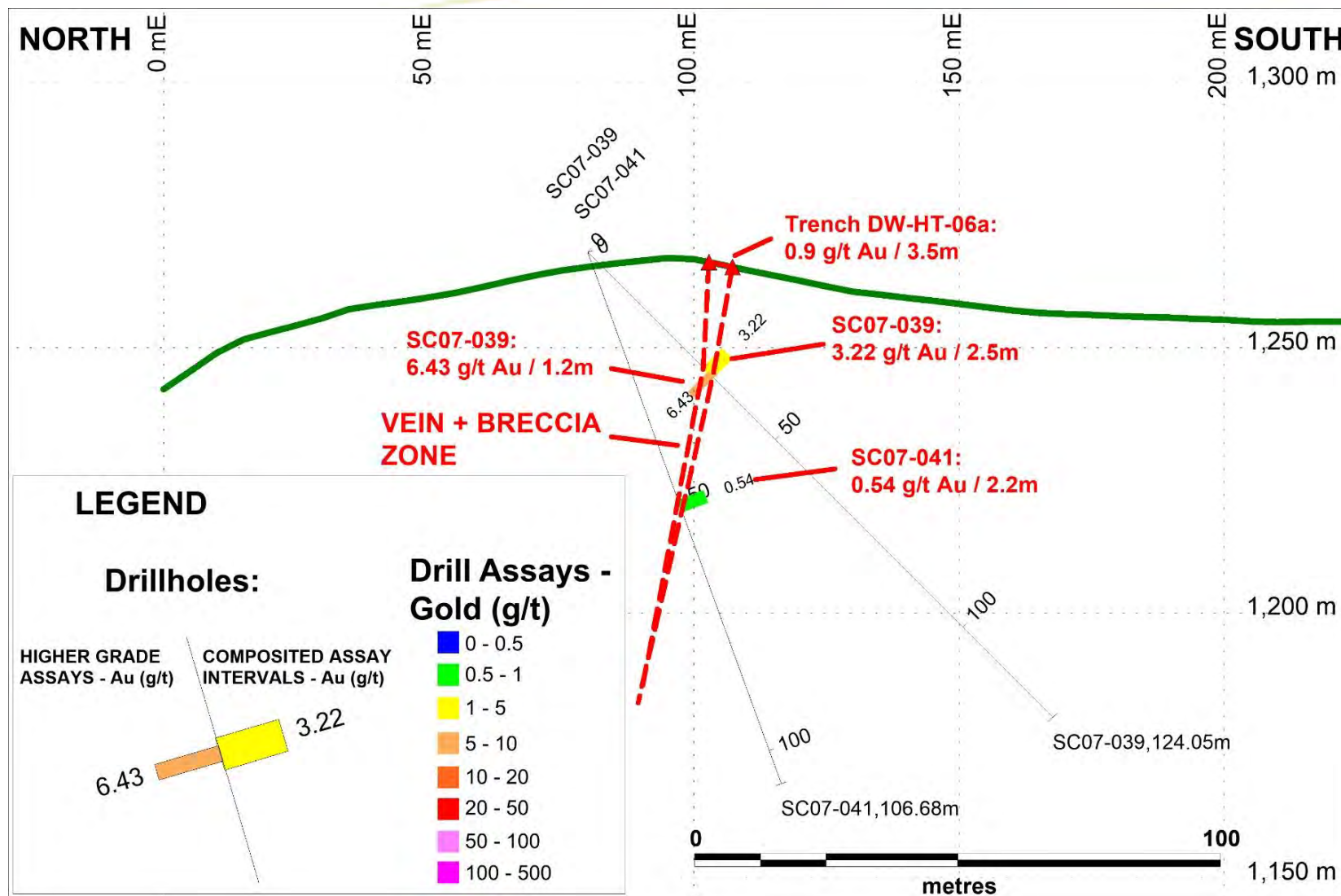
Soil and Rock and Trenching with Drill Traces and Trench Results (Au)



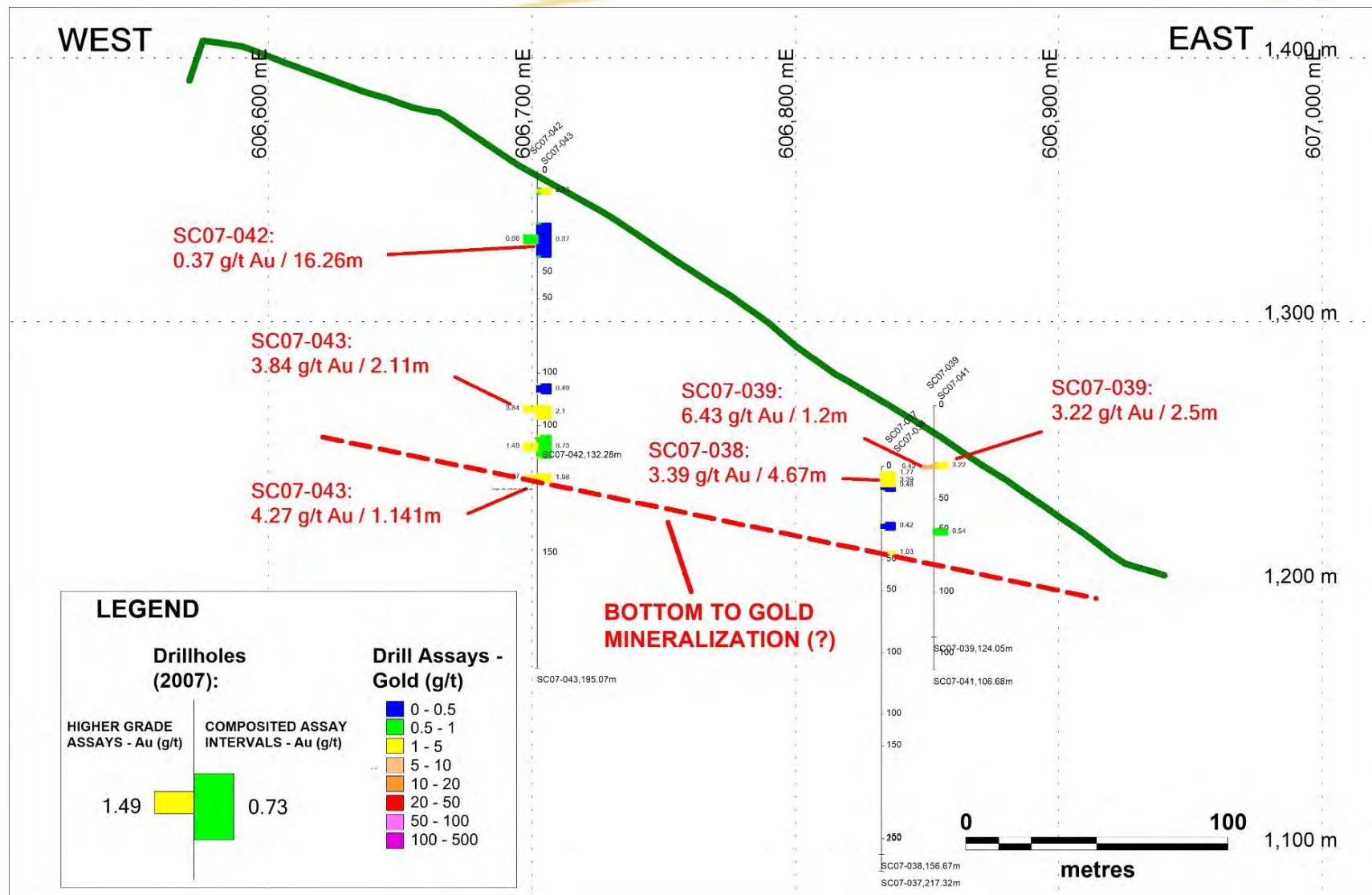
Deadwood West Drill Section with Gold Assays (606700E, looking East)



Deadwood East Drill Section with Gold Assays (606850E, looking East)



Longitudinal Section with Gold Assays (5580860N, Looking North)



Exploration Potential based on Known Occurrences

- The **JJ Zone** is the most prospective area identified to date
 - **20.2 g/t Au and 7.4 g/t Ag over 12m – best drill intercept in SBGB**
 - Minimum 700m long vein-filled fault zone defined
 - Open at depth and to the east and west
 - Soil anomalies support extension to the east (Bermuda) and the west
 - Mag lows to east and west may indicate extension of alteration zone
 - Spius formation cap between JJ and Bermuda showings may mask underlying mineralized volcanoclastics
- Deadwood, Ember, Blackburn and Discovery define a 3km east-west trend of gold mineralization (Deadwood-Blackburn Trend)
 - Continuity needs to be investigated, as well as areas where anomalous grab samples were collected (1-3.5 g/t Au)

Initial Plans for Further Work



➤ **JJ Zone**

- Additional drilling, focusing on three areas (12 holes totaling 1960m);
 - Shallow infilling of eastern high grade shoot to test continuity of bonanza style mineralization (5 holes, 380 metres)
 - Western step outs, targeting mostly deeper portions of the known JJ structure (5 holes, 780 metres)
 - Far western step outs, targeting airborne magnetic low and soil geochem anomaly (2 holes, 800 metres)

➤ **Deadwood Zone**

- Further drilling along the Deadwood zones, upslope to the west and to depth, in-between previous drill sections

➤ **Bermuda**

- Prospecting along the JJ-Bermuda Trend to the east, initially focusing on known geochemical anomalies