



**EXPLORING**  
BRITISH COLUMBIA'S  
NEWEST **GOLD** BELT

**TSX-V: WHN**

**[www.westhavenventures.com](http://www.westhavenventures.com)**



## CAUTIONARY AND FORWARD LOOKING STATEMENTS



*Certain statements contained in this presentation that are not historical facts are forward-looking statements as that term is defined in the United States Private Securities Litigation Reform Act of 1995. In addition, certain statements in this presentation may be considered forward-looking information under applicable Canadian securities laws. Forward-looking statements and forward-looking information address future events and conditions and therefore involve known and unknown risks and uncertainties. Forward-looking statements are frequently characterized by words such as “plans”, “expects”, “estimates”, “projects”, “intends”, “believes”, “anticipates” and other similar words, or statements that certain events “may” or “will” occur. They can also be identified by the fact that they do not relate strictly to historical or current facts. Forward-looking statements are based on the opinions and estimates of management at the date the statements are made, and are subject to a variety of risks and uncertainties and other factors that could cause actual events or results to differ materially from those projected in the forward-looking statements. These factors include, but are not limited to, the inherent risks involved in the exploration and development of mineral properties, the uncertainties involved in interpreting drill results and other exploration data, fluctuating metal prices, the possibility of project cost overruns or unanticipated costs and expenses, uncertainties relating to the availability and costs of financing needed in the future and other specific factors that may be identified in the course of this presentation. No forward-looking statement can be guaranteed and actual results may differ materially from those currently anticipated in such statements. The Company undertakes no obligation to update forward-looking statements except as required by applicable law. The reader is cautioned not to place undue reliance on forward-looking statements.*

# COMPANY SNAPSHOT



**TSX-V: WHN**

**Shares Outstanding:** 88,199,930

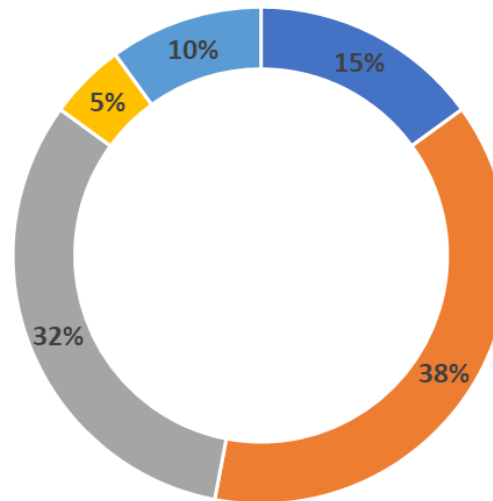
**Shares Fully Diluted:** 97,700,975\*

**Market Capitalization:** ~\$82M

**Working Capital:** ~\$3M

**Daily Average Volume:** 383,553

**\*Should the 9,501,045 options and warrants be exercised, the Company will receive gross proceeds of: \$4,115,241**



## Ownership

- Institutions and Funds
- Directors and Officers
- Retail Investors
- Resource Companies
- Friends and Family



# THE OPPORTUNITY



- 35,000 hectare land package on underexplored gold belt with district-scale potential; gold mineralization throughout the belt.
- Road accessible and close to major highways; equates to cost-effective exploration.
- New high-grade discovery at Shovelnose; ~3,000 metre drill program is ongoing
- Team has a track record of discovery:  
(Diavik, Polaris, Thor Lake, Silvertip, **Spences Bridge Gold Belt**)
- Management has a large equity position (~38%).





# MANAGEMENT, DIRECTORS & ADVISORS



**D. Grenville Thomas, P. Eng. (Chairman):** Founder and past Chairman of Aber Resources Ltd., discoverer of the Diavik Diamond Mine (now Dominion Diamond Corp.), 2009 Canadian Mining Hall of Fame inductee and recipient of PDAC's Prospector of the Year Award in 1999.

**Gareth Thomas, BA (President & CEO, Director):** 15 years experience in the mining exploration industry. He has worked with numerous public companies in project management, business development, and has been instrumental in building the Company and its dominant land package on the Spences Bridge Gold Belt. Mr. Thomas is a co-founder of Westhaven Ventures Inc.

**Victor A. Tanaka, BSc Geology (Director):** 45 years of broad Canadian and International experience. Project Geologist on the discovery team of the Polaris lead-zinc mine, Nunavut. Director of four TSX-V resource companies.

**Shaun Pollard, MBA, CMT (CFO, Director):** Founding partner at Meridian Resource Capital International Ltd, a mining focused advisory firm providing corporate finance, capital markets (\$150m+raised), business development and promotional services. Mr. Pollard is a co-founder of Westhaven Ventures Inc.

**Hannah McDonald, LLB (Director):** has spent the majority of her career advising on land, resource issues and governance. Hannah graduated from the University of British Columbia Law School and holds an undergraduate degree in Communications from Simon Fraser University.

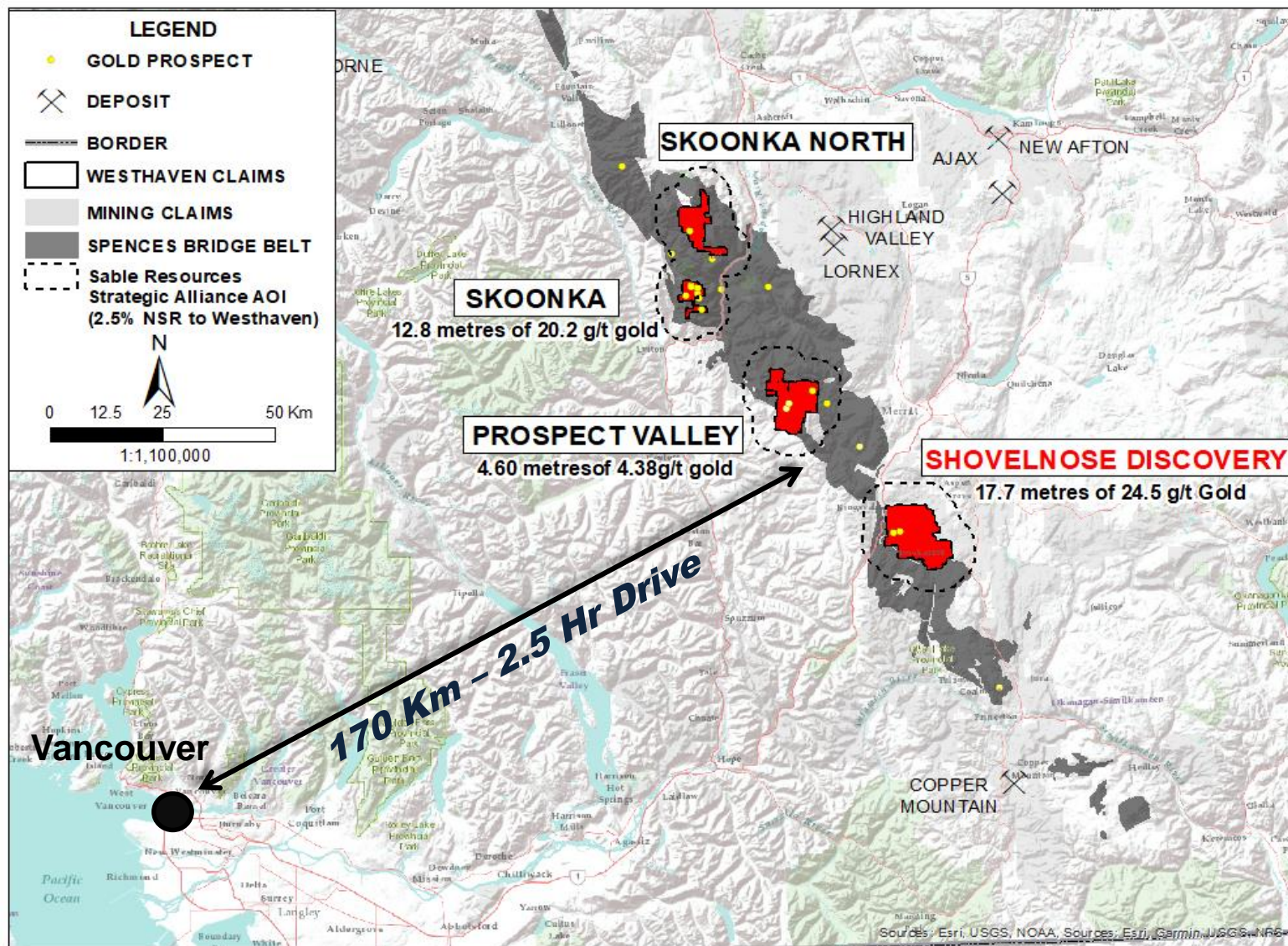
**Ed Balon, P.Geo (Advisor):** Co-discoverer of several deposits in Western Canada. Mr. Balon is widely recognized for identifying the Spences Bridge epithermal gold belt in southern British Columbia. Recipient of the 2005 AME BC "Spud Huestis Award; Yukon Prospectors Association Hall of Fame Inductee.

**Peter Fischl, P.Geo (Exploration Manager):** 30 years of Canadian and International exploration experience. Past ~20 years has been largely concentrated on epithermal gold deposits including Kupol/Dvoinoye (Russia), Hollister (Carlin Trend, Nevada), and Harmony/Cinola (BC).



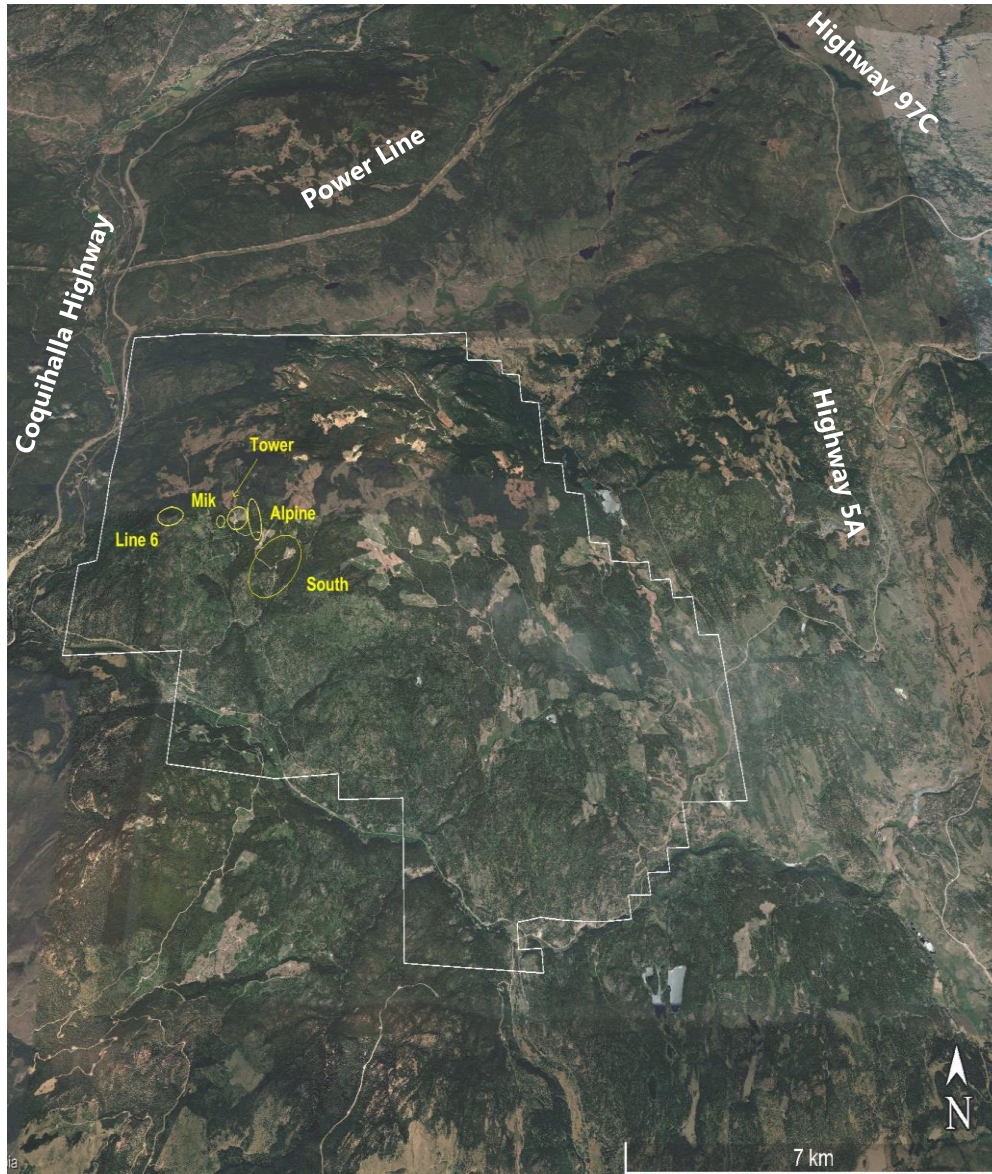
# SPENCES BRIDGE GOLD BELT (SBGB)

**westhaven**  
ventures inc





# SHOVELNOSE GOLD PROPERTY



- 15,542 hectares
- Borders the Coquihalla Highway 30 kilometres south of Merritt, British Columbia.
- Road accessible and close to major transportation routes and infrastructure allowing for year-round cost-effective exploration.
- Limited work done on majority of the property

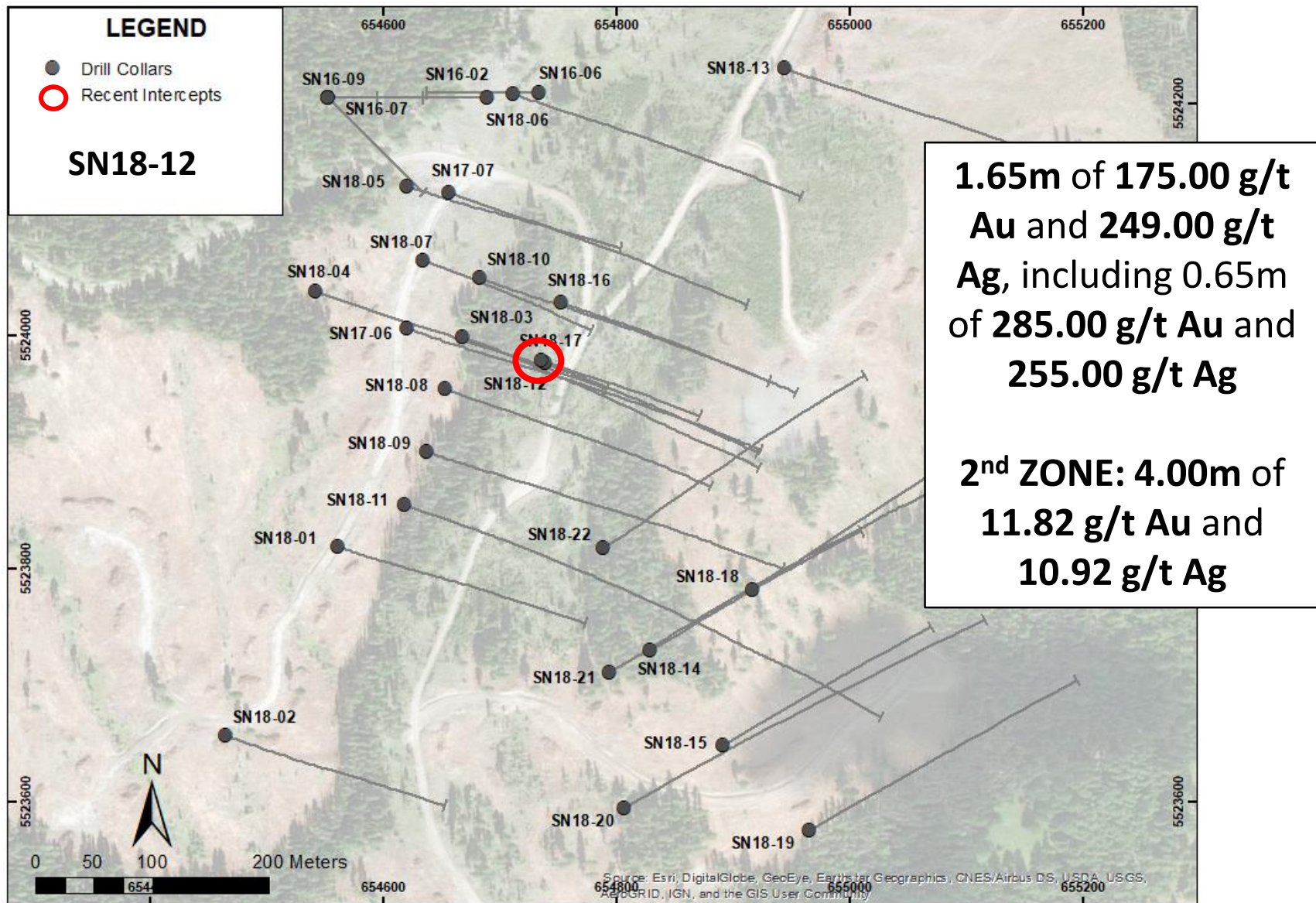


# SOUTH ZONE (LOOKING SOUTHEAST)



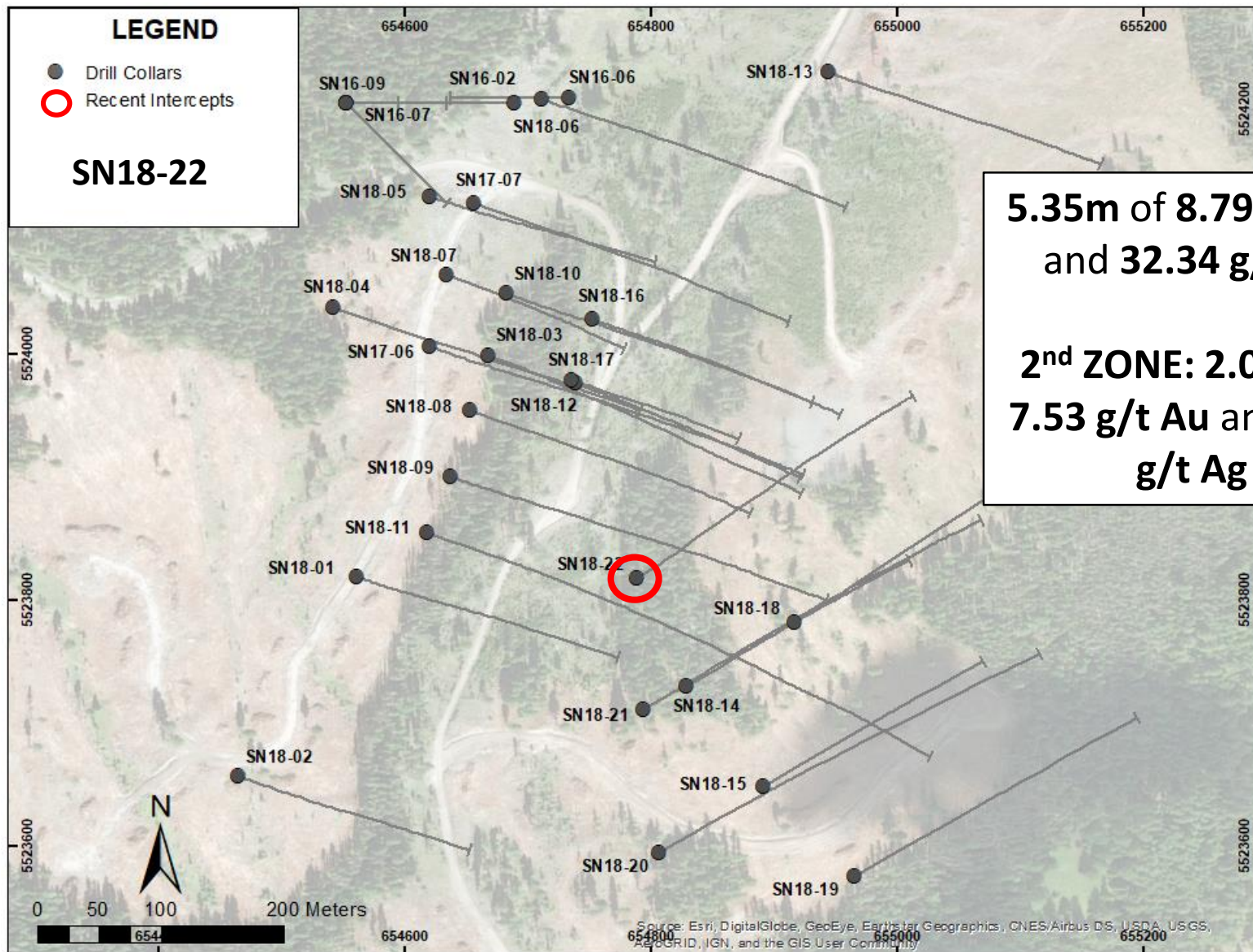


# A NEW DISCOVERY (SOUTH ZONE)



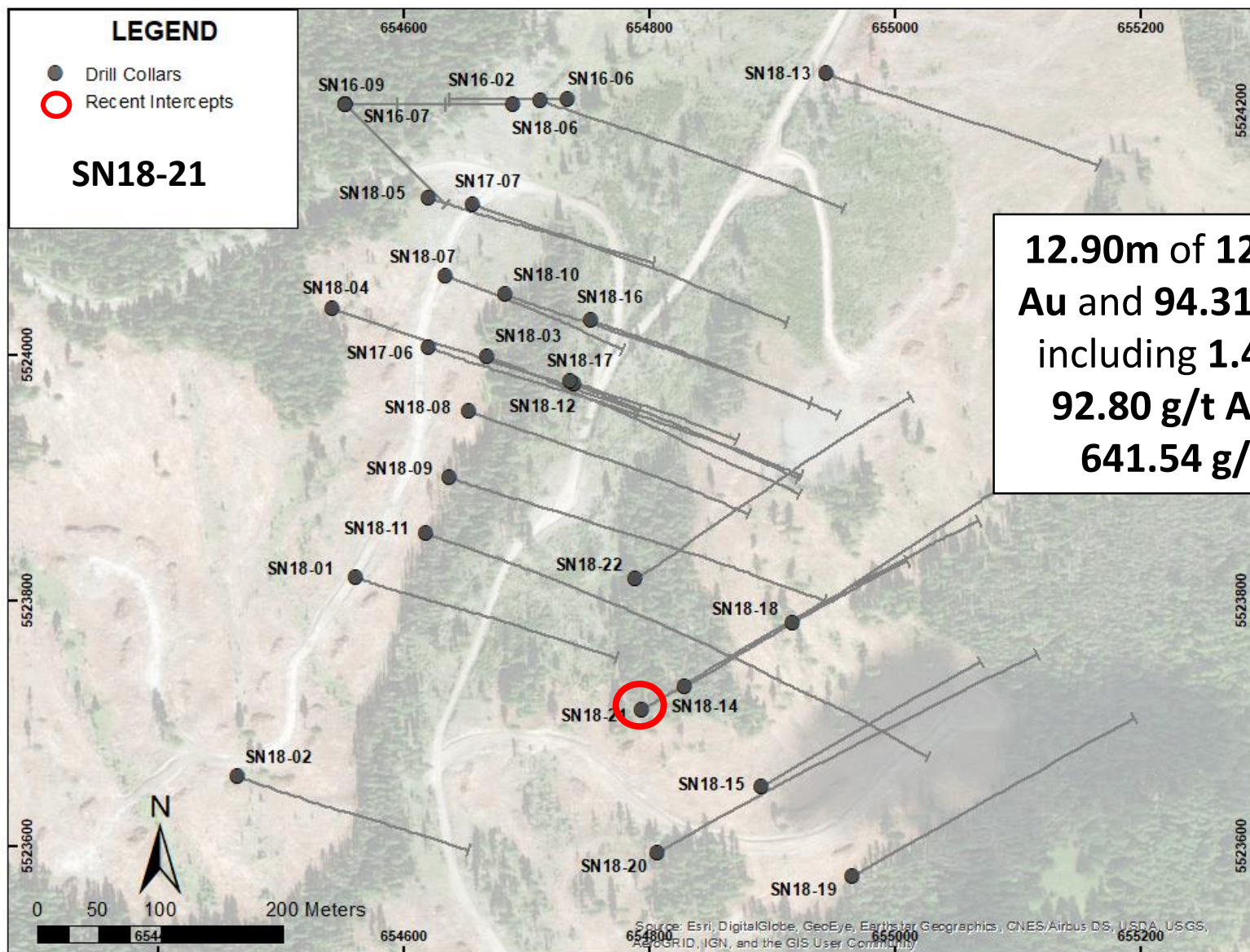


# A NEW DISCOVERY (SOUTH ZONE)



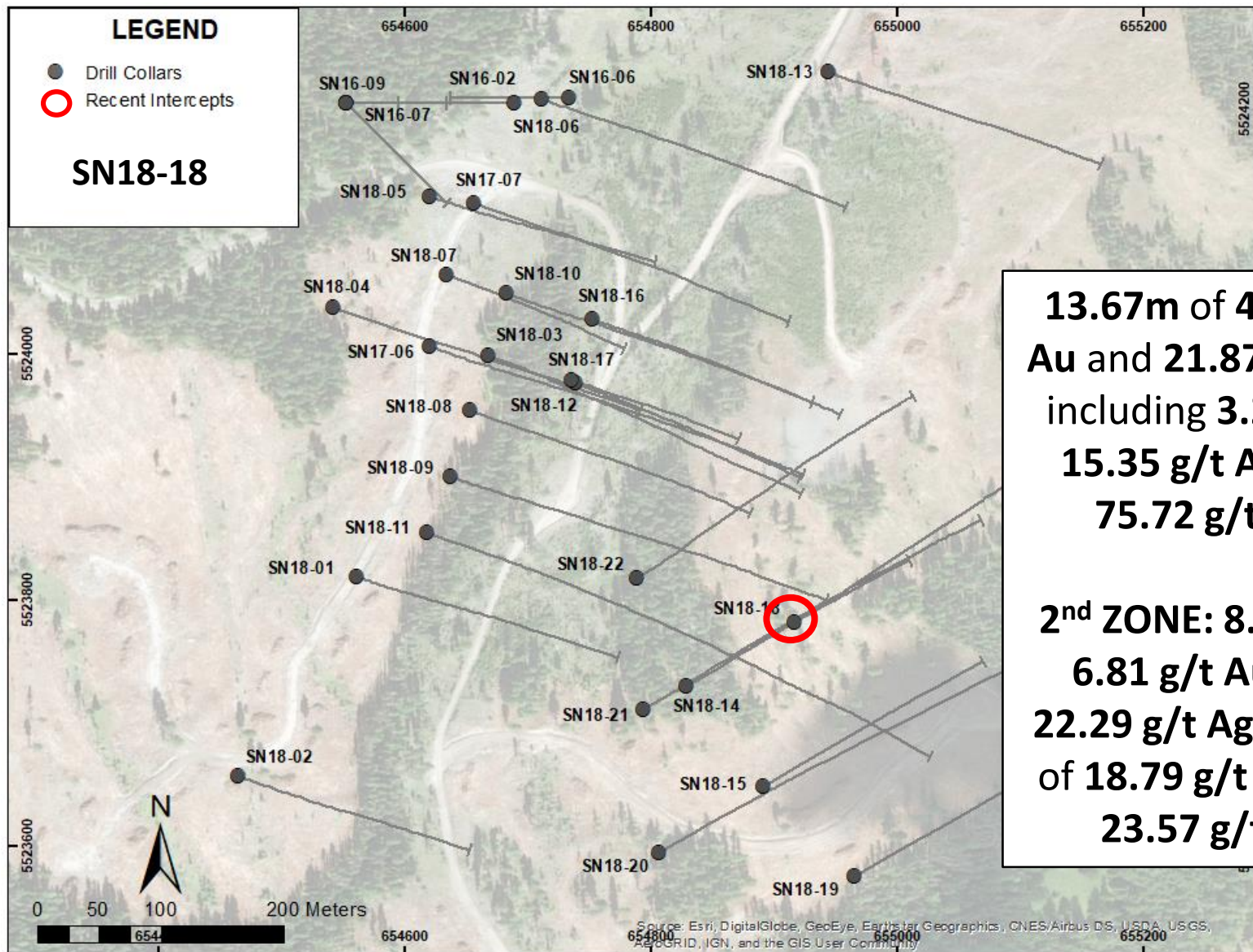


# A NEW DISCOVERY (SOUTH ZONE)





# A NEW DISCOVERY (SOUTH ZONE)

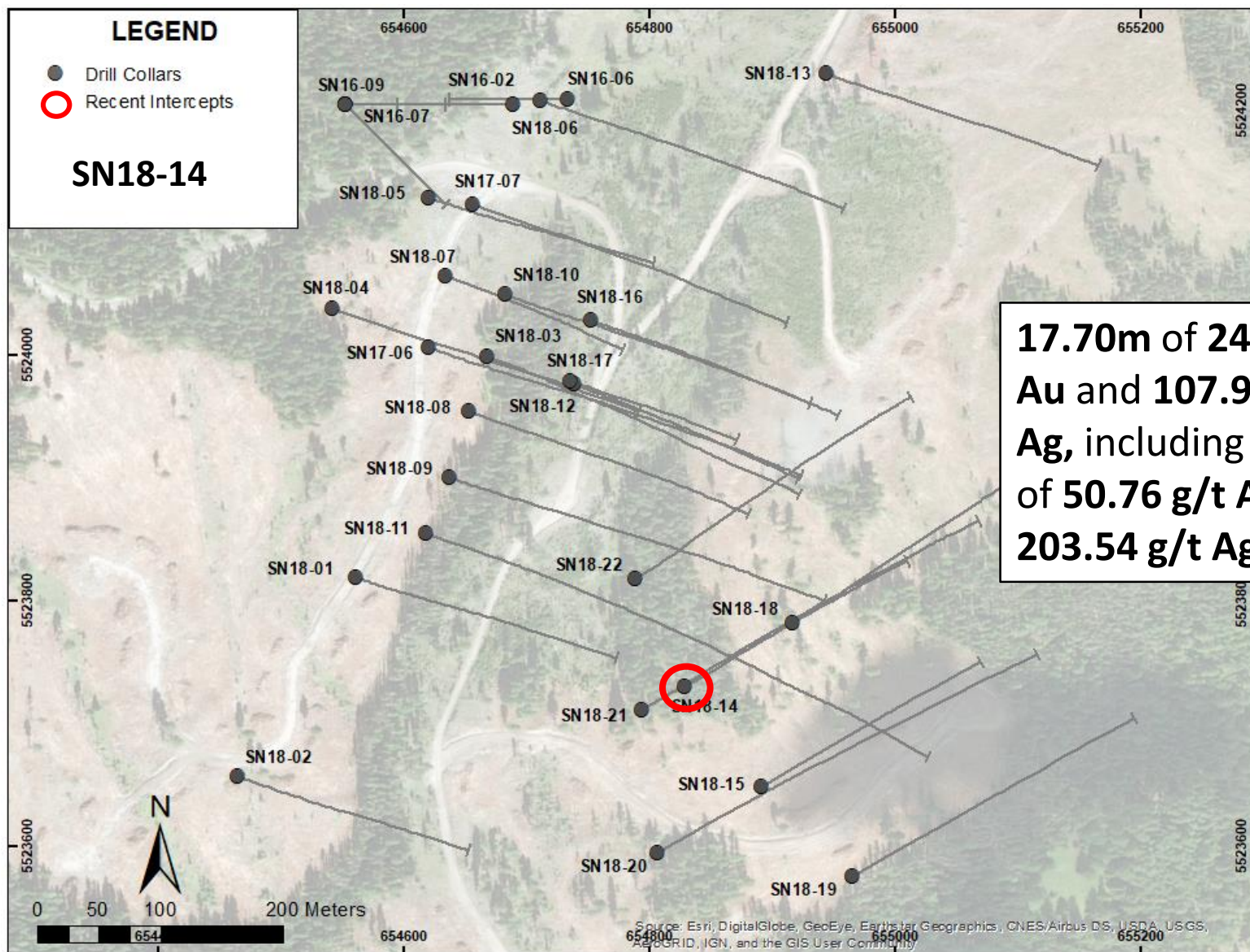


**13.67m of 4.29 g/t Au and 21.87 g/t Ag, including 3.27m of 15.35 g/t Au and 75.72 g/t Ag.**

**2<sup>nd</sup> ZONE: 8.00m of 6.81 g/t Au and 22.29 g/t Ag. 2.20m of 18.79 g/t Au and 23.57 g/t Ag**

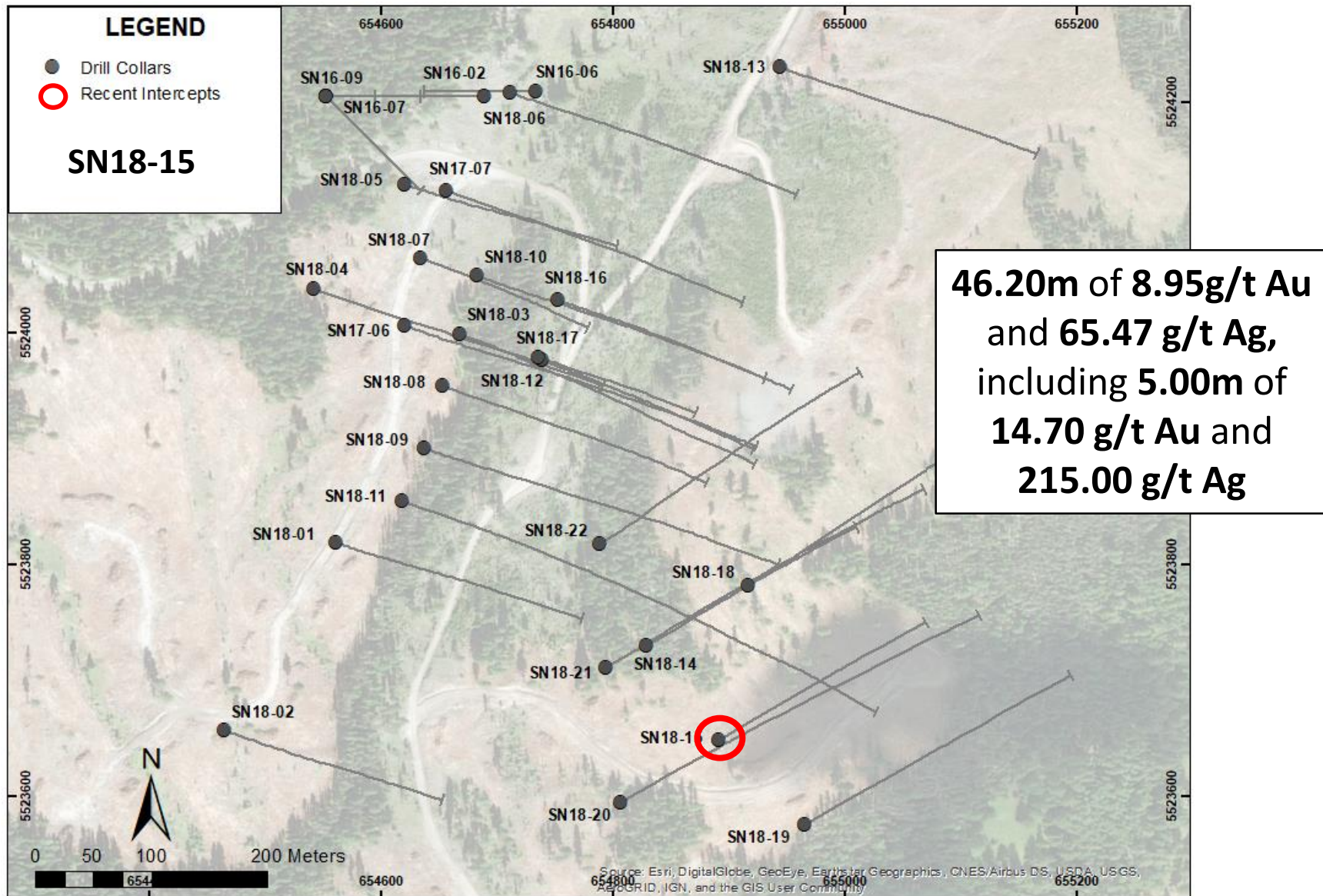


# A NEW DISCOVERY (SOUTH ZONE)



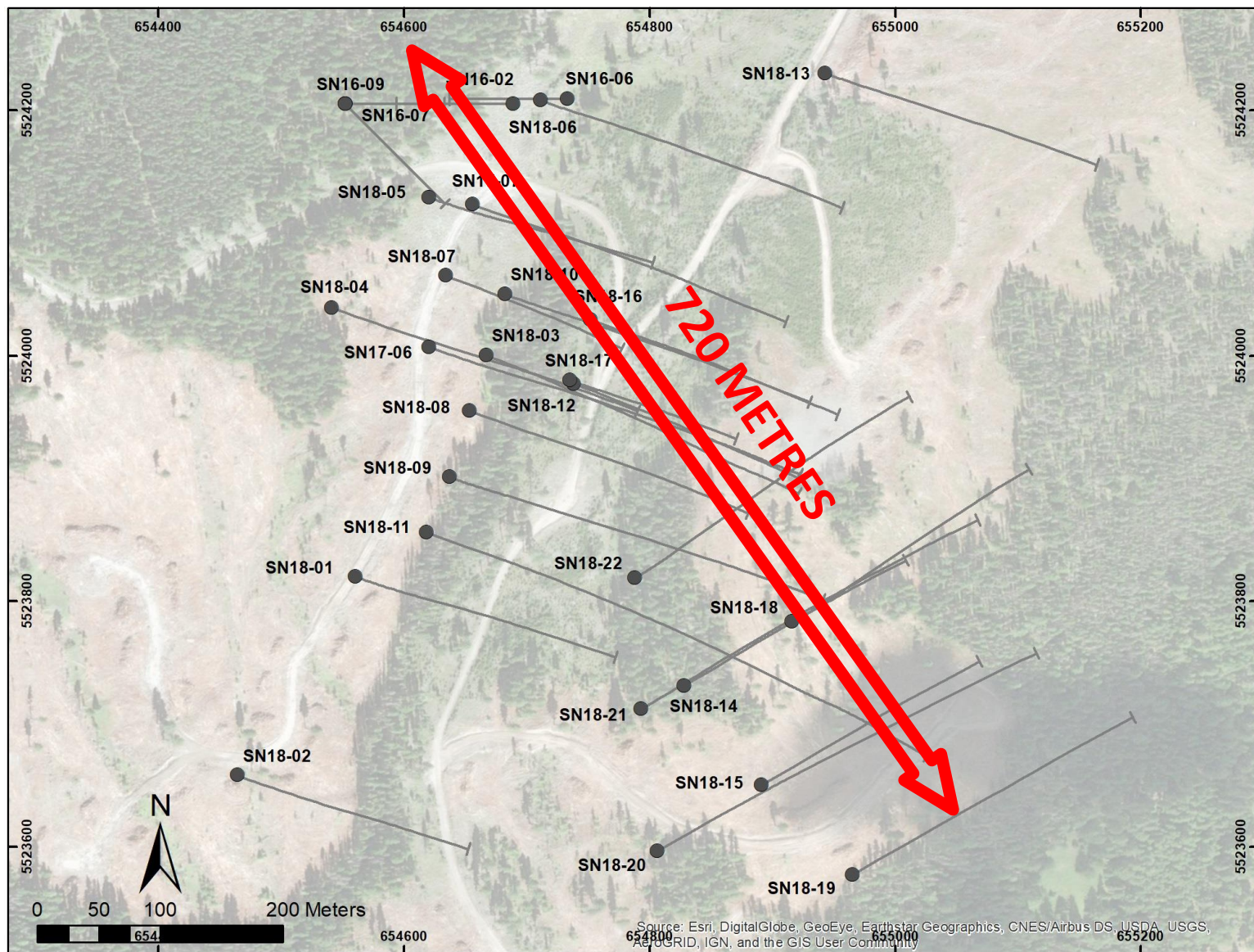


# A NEW DISCOVERY (SOUTH ZONE)



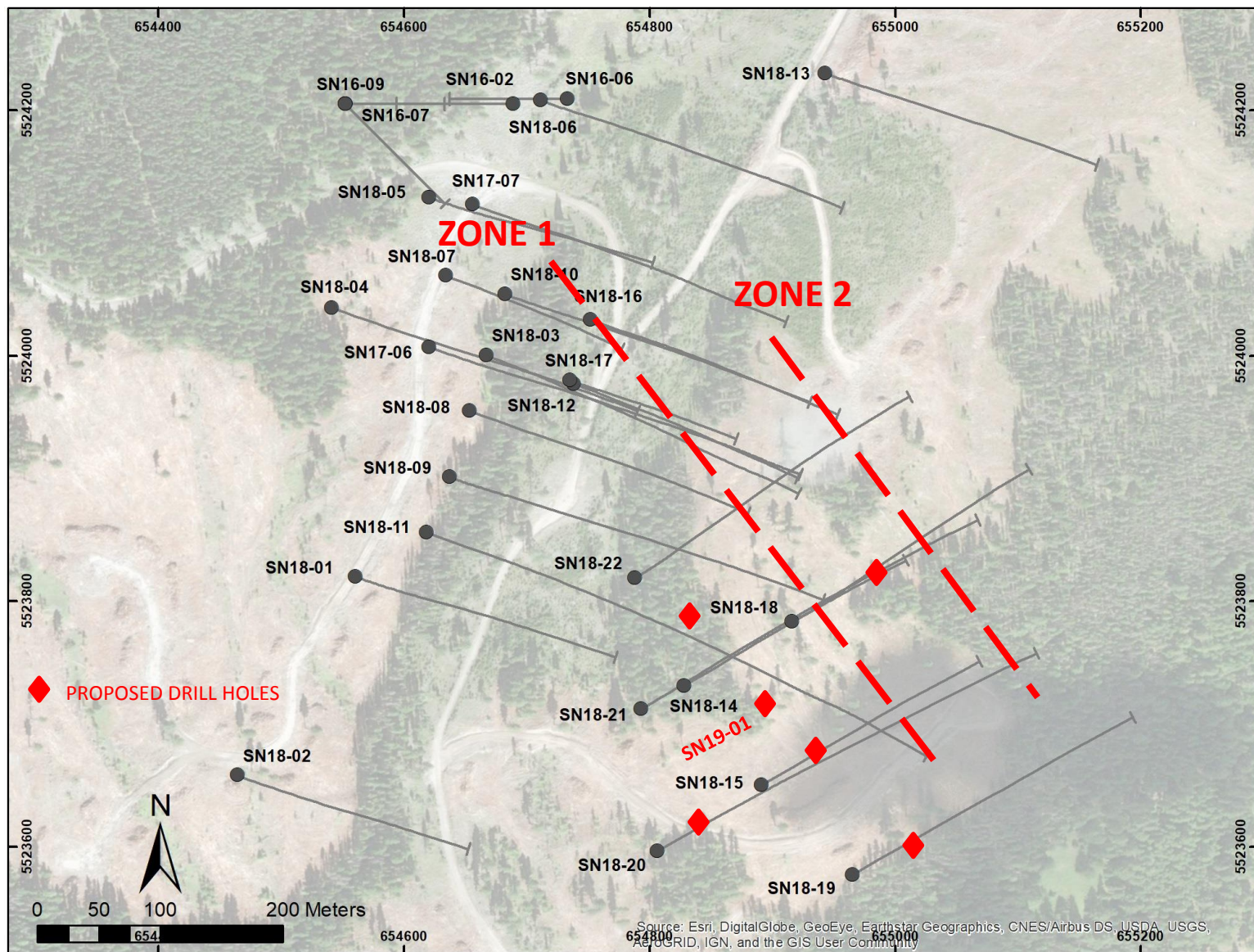


# 720 METRES OF STRIKE LENGTH (SO FAR)



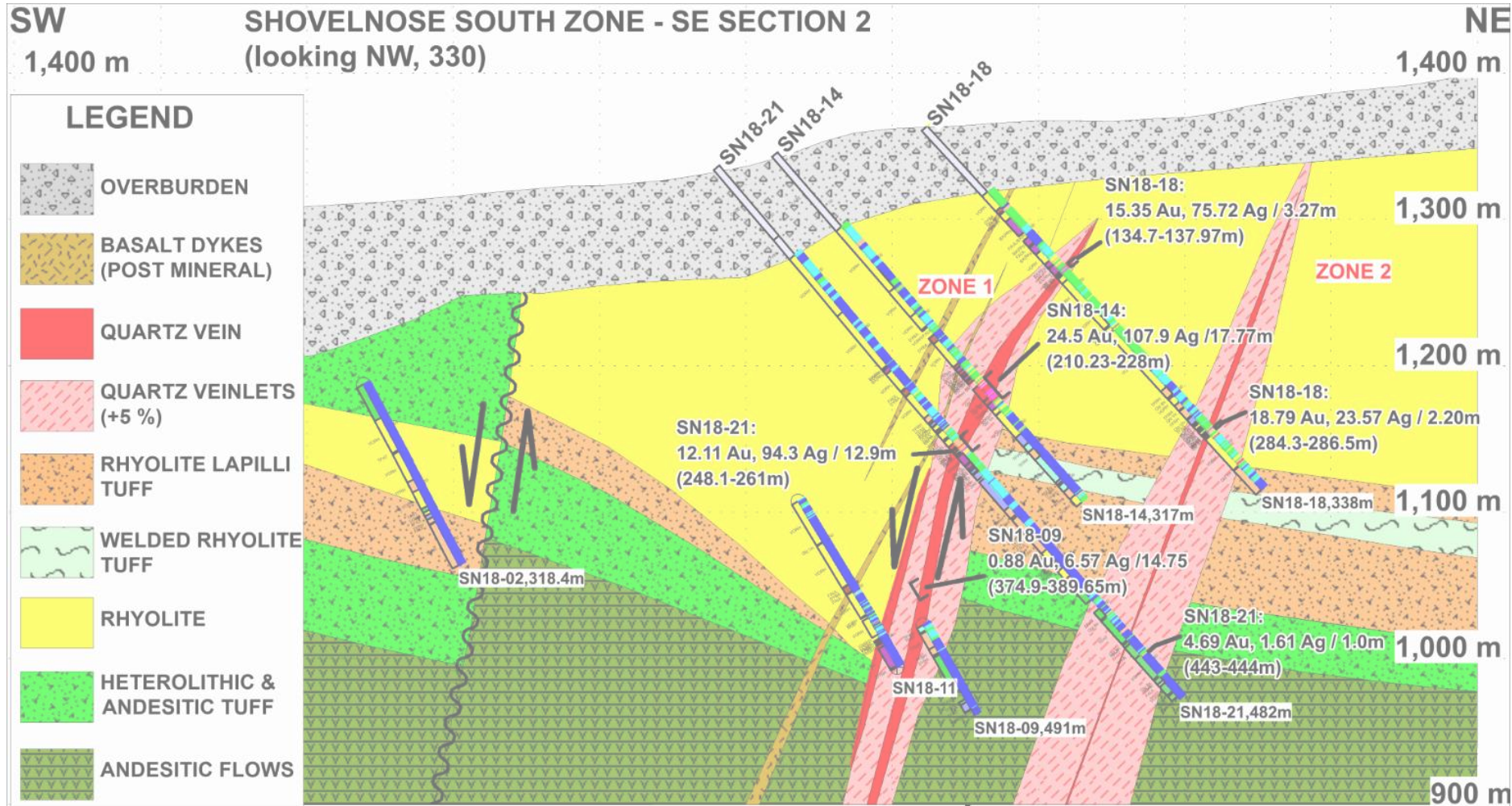


# DRILLING WINTER 2019



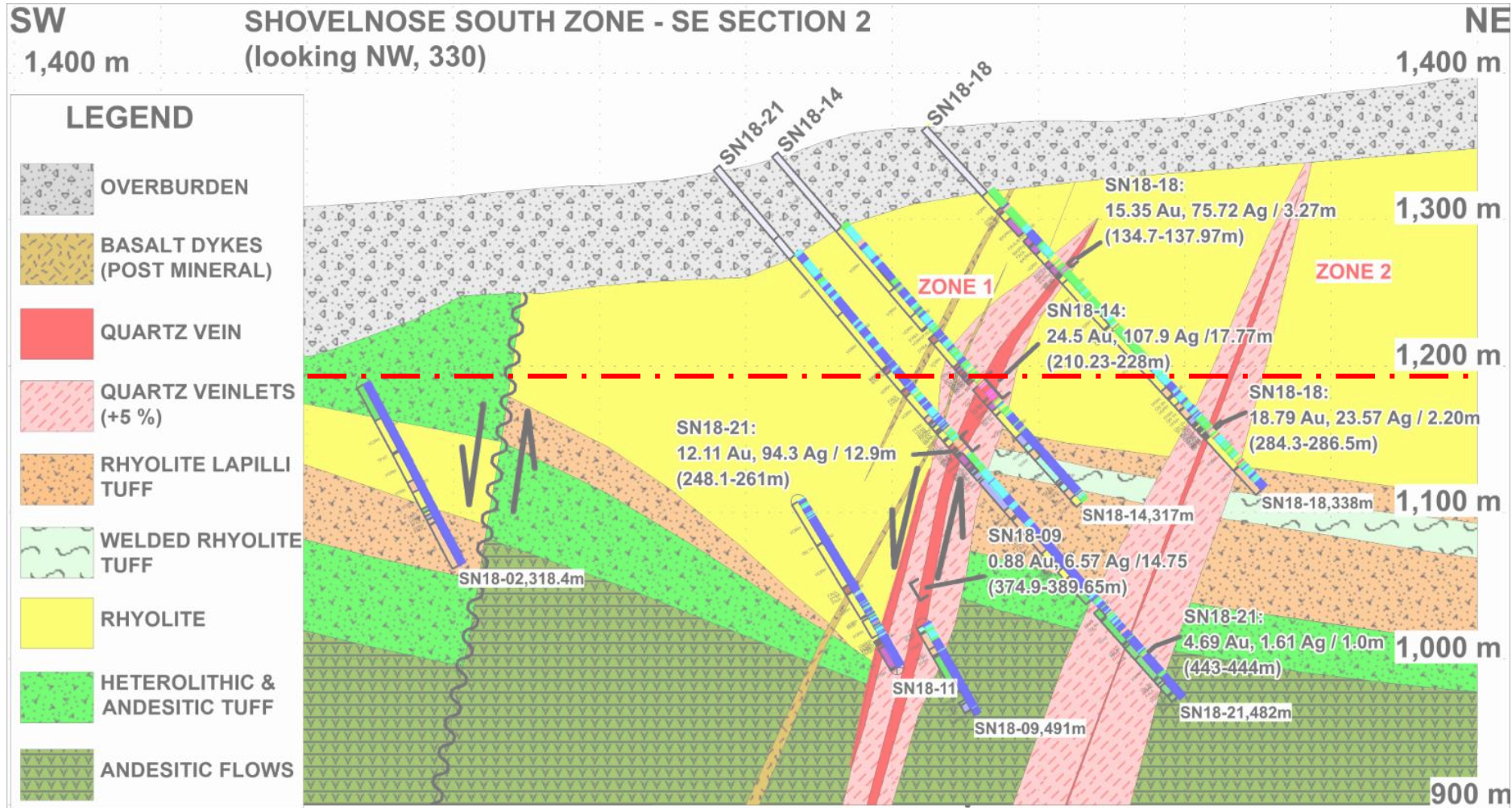


# CROSS-SECTION (TARGETING 2<sup>ND</sup> ZONE)



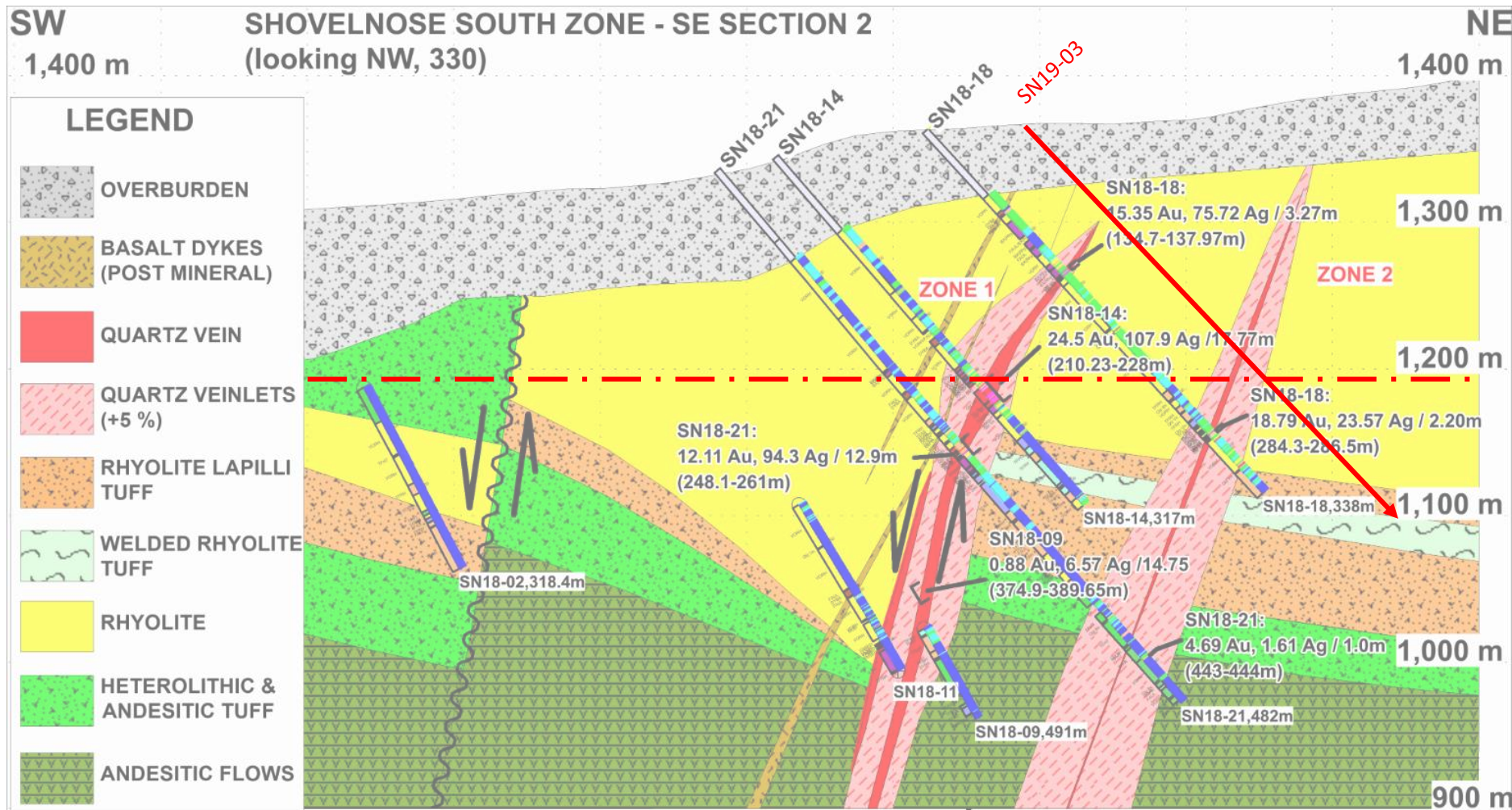


# CROSS-SECTION (TARGETING 2<sup>ND</sup> ZONE)





# CROSS-SECTION (TARGETING 2<sup>ND</sup> ZONE)

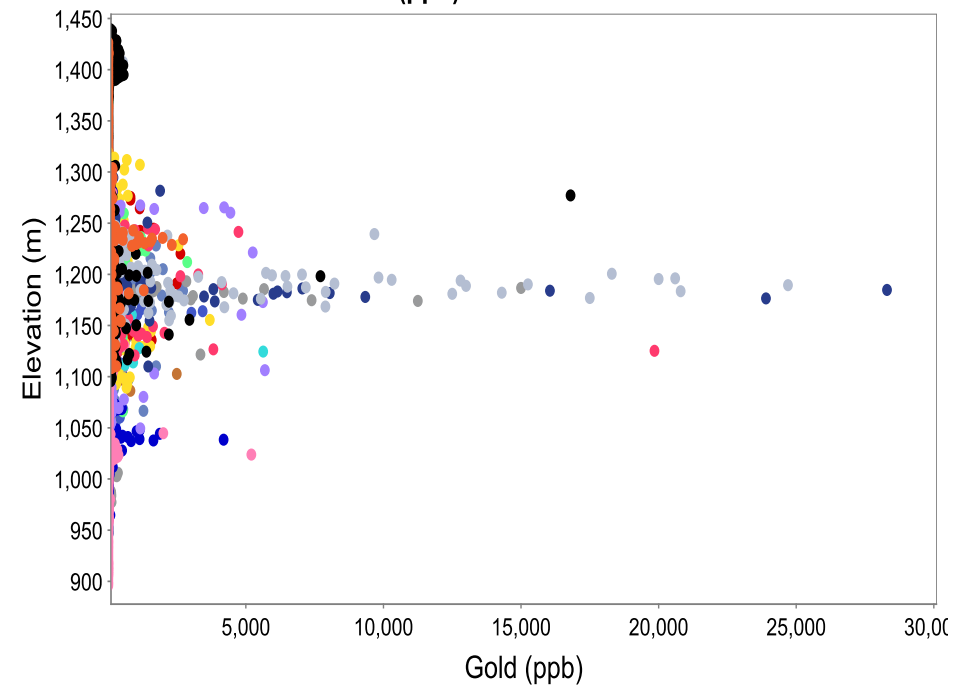




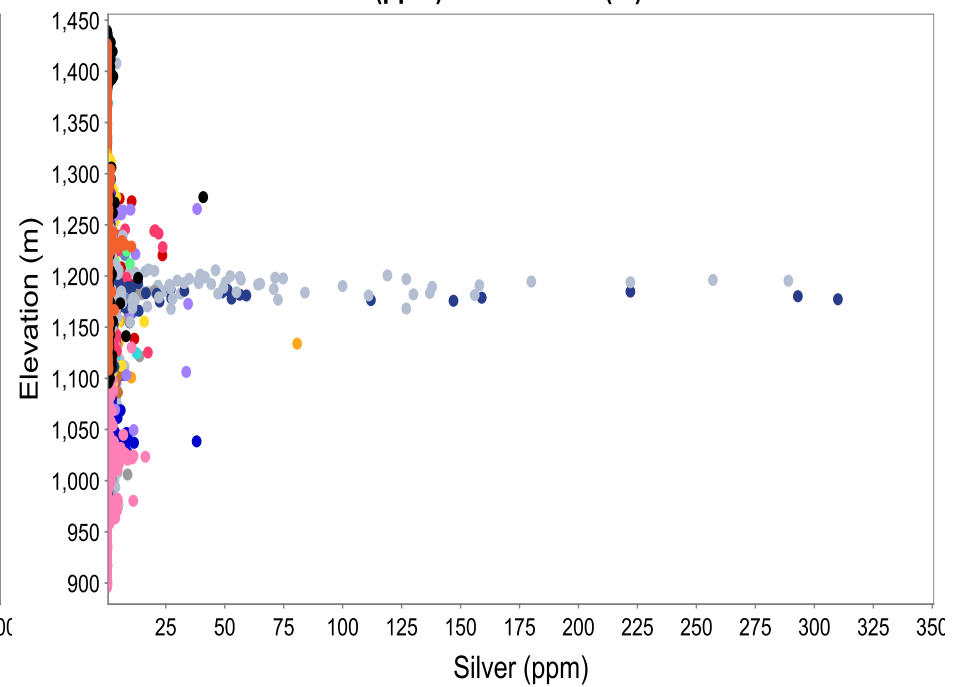
# ELEVATION CONTROL



Gold (ppb) vs Elevation



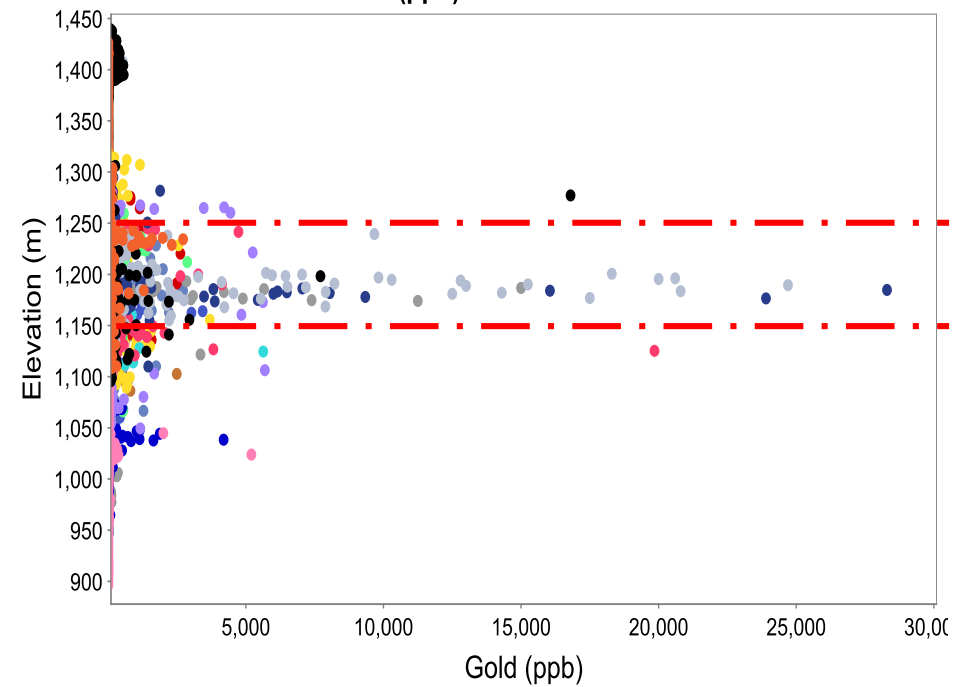
Silver (ppm) vs Elevation (m)



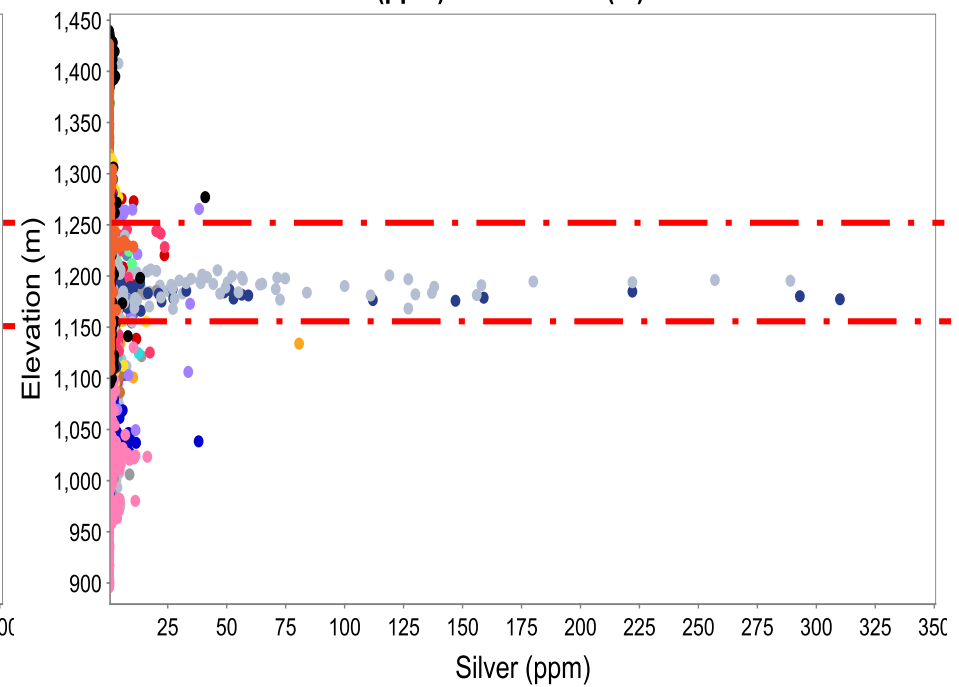


# ELEVATION CONTROL

Gold (ppb) vs Elevation



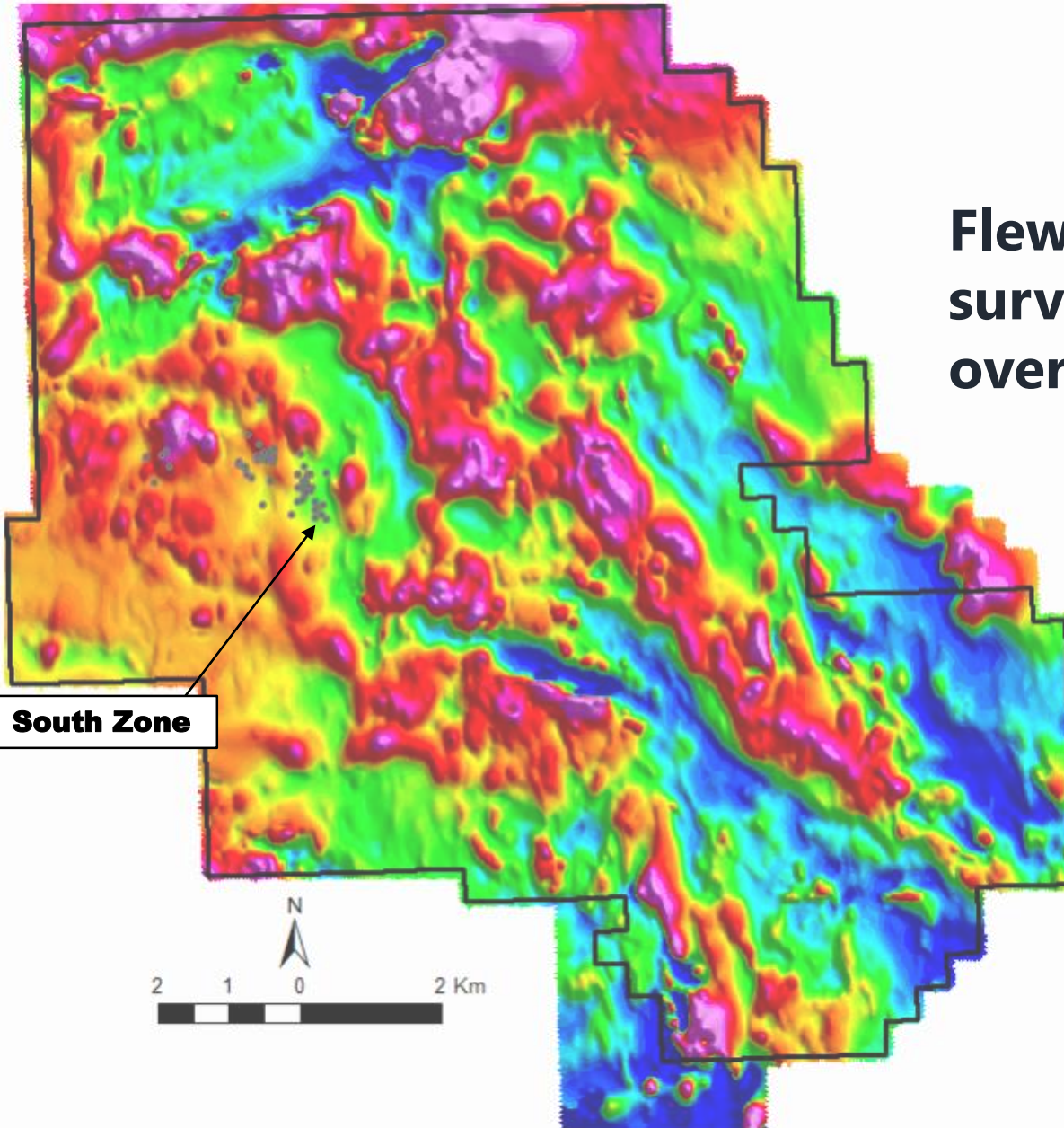
Silver (ppm) vs Elevation (m)





# AIRBORNE MAGNETICS

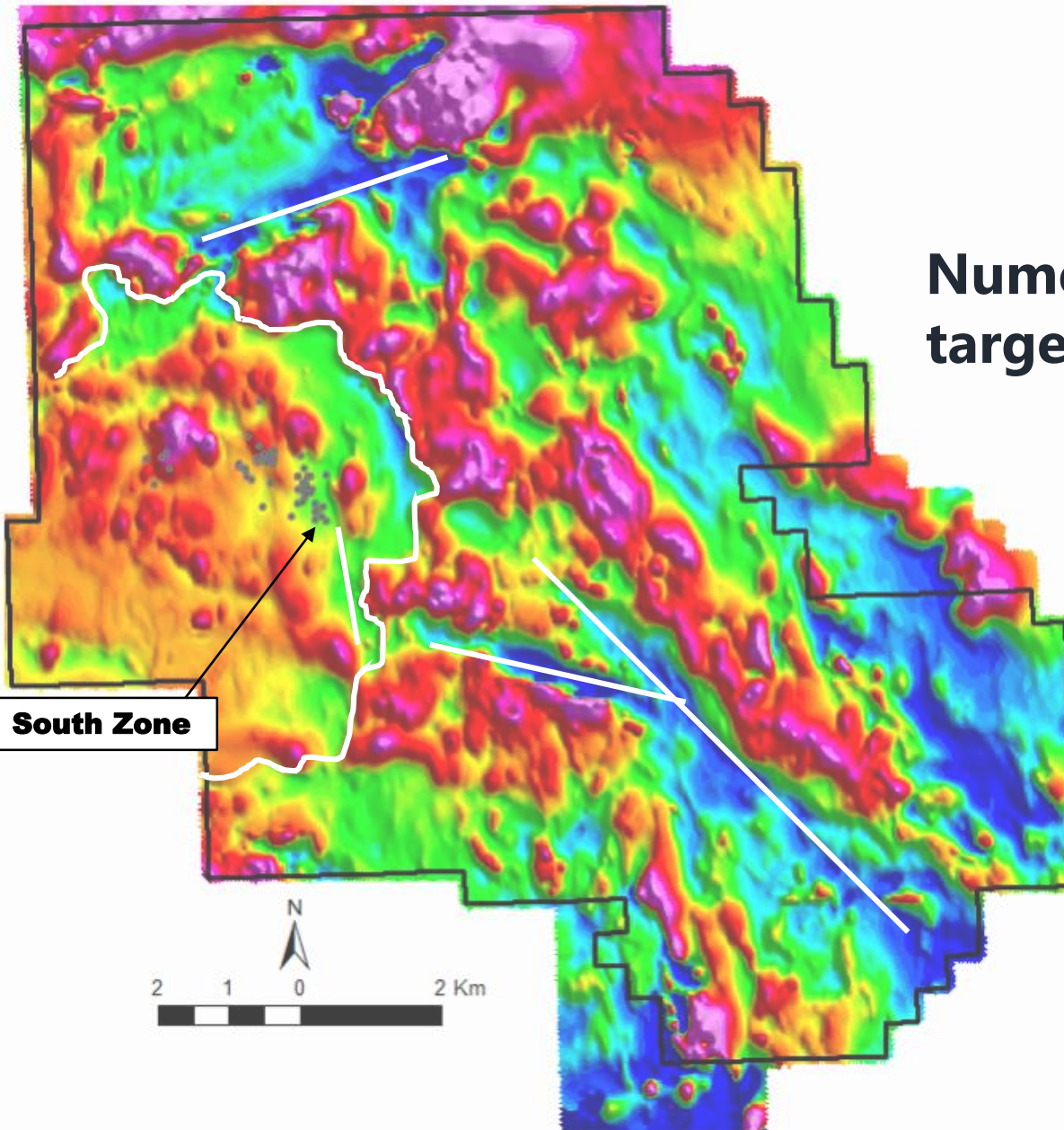
**Flew a magnetic airborne  
survey (75m spacing)  
over the entire property**





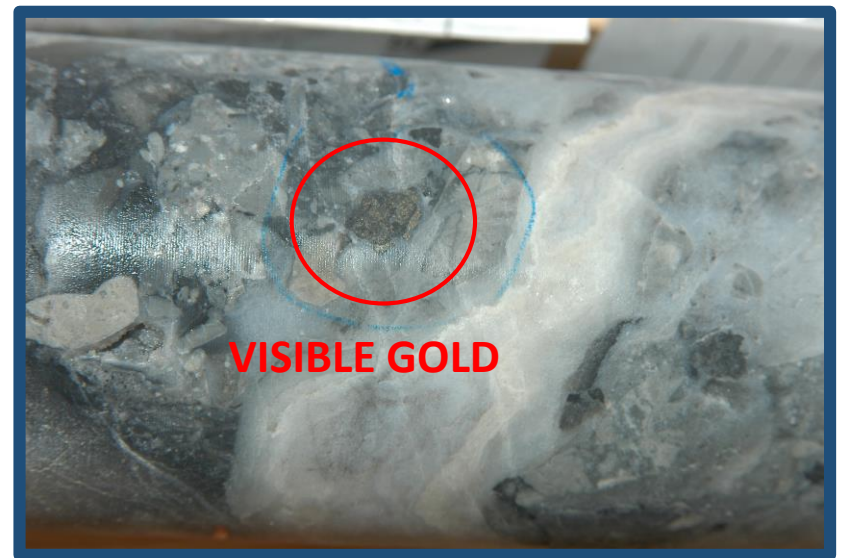
# AIRBORNE MAGNETICS

**Numerous magnetic-low targets to be tested**





# SN19-01 (ASSAYS PENDING)





- **Large land package on an underexplored gold belt**
- **District scale potential**
- **~3,000 metre drill program ongoing at Shovelnose**





[www.westhavenventures.com](http://www.westhavenventures.com)