

Spences Bridge Gold Belt

Low-Cost Exploration & Development in Southern British Columbia

TSX-V: WHN | WESTHAVENGOLD.COM

June 2025

Cautionary and Forward-Looking Statements

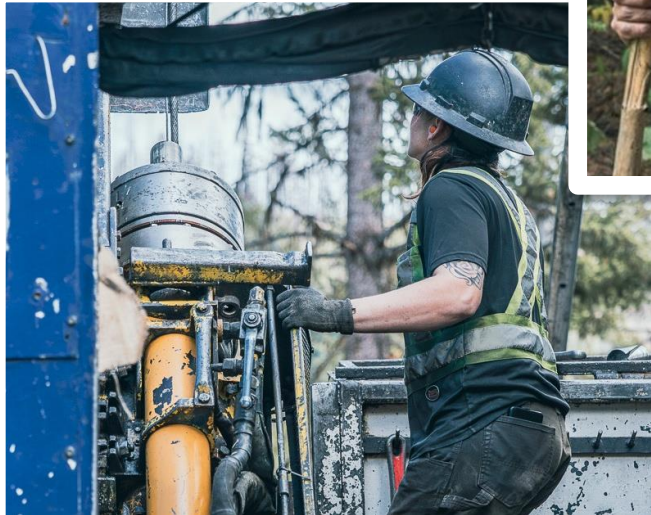
The content of this presentation is for information purposes only and does not constitute or form part of, and should not be construed as, an offer or invitation to sell or any solicitation of any offer to purchase or subscribe for any securities of Westhaven Gold Corp. (the "Company" or "Westhaven") in Canada, the United States or any other jurisdiction. Trading in the securities of the Company should be considered highly speculative. This presentation is not, and in no circumstances is it to be construed as, a prospectus, offering memorandum, an advertisement, or a public offering of securities. No securities regulatory authority or similar authority has reviewed or in any way passed upon the document or the merits of any securities of the Company and any representation to the contrary is an offence. Except as otherwise stated, information included in this presentation is given as of the date hereof. The delivery of this presentation shall not imply that the information herein is correct as of any date after the date hereof. Readers should not construe anything in this presentation as investment, legal or tax advice.

Forward-Looking Statements This presentation contains "forward-looking statements" within the meaning of applicable securities legislation. These forward-looking statements are made as of the date of this presentation and the Company does not intend, and does not assume any obligation, to update these forward-looking statements, except as required by law. • Forward-looking statements may include, but are not limited to, statements with respect to the future price of metals, the estimation of mineral resources, the realization of mineral resource estimates, the timing and amount of estimated future production, capital expenditures, success of exploration activities, permitting timelines, requirements for additional capital, government regulation of mining operations, environmental risks, unanticipated reclamation expenses, title disputes or claims, limitations on insurance coverage, the completion of transactions and future listings and regulatory approvals. In certain cases, forward-looking statements can be identified by the use of words such as "plans", "expects" or "does not expect", "is expected", "budget", "scheduled", "estimates", "forecasts", "intends", "anticipates" or "does not anticipate", or "believes", or variations of such words and phrases or state that certain actions, events or results "may", "could", "would", "might" or "will be taken", "occur" or "be achieved". • In making the forward-looking statements in this presentation, the Company has applied certain factors and assumptions that it believes are reasonable, including that there is no material deterioration in general business and economic conditions; that the supply and demand for, deliveries of, and the level and volatility of prices of the Company's primary metals and minerals develop as expected; that the Company receives regulatory and governmental approvals for its properties on a timely basis; that the Company is able to obtain financing for its properties on reasonable terms; that the Company is able to procure equipment and supplies in sufficient quantities and on a timely basis; that engineering and exploration timetables and capital costs for the Company's exploration plans are not incorrectly estimated or affected by unforeseen circumstances; that any environmental and other proceedings or disputes are satisfactorily resolved; and that the Company maintain its ongoing relations with its business partners. • However, forward-looking statements involve known and unknown risks, uncertainties and other factors which may cause the actual results, performance or achievements of the Company to be materially different from any future results, performance or achievements expressed or implied by the forward-looking statements. Such factors may include, among others, actual results of current exploration activities; actual results of reclamation activities; future metal prices; accidents, labor disputes and other risks of the mining industry; delays in obtaining governmental or regulatory approvals or financing or in the completion of exploration activities, as well as other risk factors that may arise. Although the Company has attempted to identify important factors that could cause actual actions, events or results to differ materially from those described in forward-looking statements, there may be other factors that cause actions, events or results not to be as anticipated, estimated or intended. There can be no assurance that forward-looking statements will prove to be accurate, as actual results and future events could differ materially from those anticipated in such statements. • Accordingly, readers should not place undue reliance on forward-looking statements. The Company does not undertake to update any forward-looking statements, except in accordance with applicable securities laws.

Historical Information The information contained herein, while obtained from sources which we believe are reliable, is not guaranteed as to its accuracy or completeness. References are made herein to historical information containing geologic and technical information. By its nature, this information cannot be verified. The Company has assumed that this historical information is accurate and complete in all material aspects and, while the Company has carefully reviewed all the available information, it cannot guarantee its accuracy and completeness.

Qualified Person The technical and scientific information in this presentation has been reviewed and approved by Peter Fischl, P.Geo, who is a Qualified Person for the Company under the definitions established by National Instrument 43-101 *Standards of Disclosure for Mineral Projects*.

Westhaven Gold Corp. - Who are we?



MANAGEMENT

Ken Armstrong

President and CEO

Zara Boldt

CFO and Corporate Secretary

Robin Hopkins

VP Exploration

Peter Fischl

Chief Geologist

Sean Thompson

VP Corporate Development & Investor Relations

Fraser MacCorquodale

Technical Advisor

DIRECTORS

Eira Thomas

Chairperson

Victor Tanaka

Independent Director

Hannah McDonald

Independent Director

Paul McRae

Independent Director

Gareth Thomas

Director and Advisor

Company Snapshot

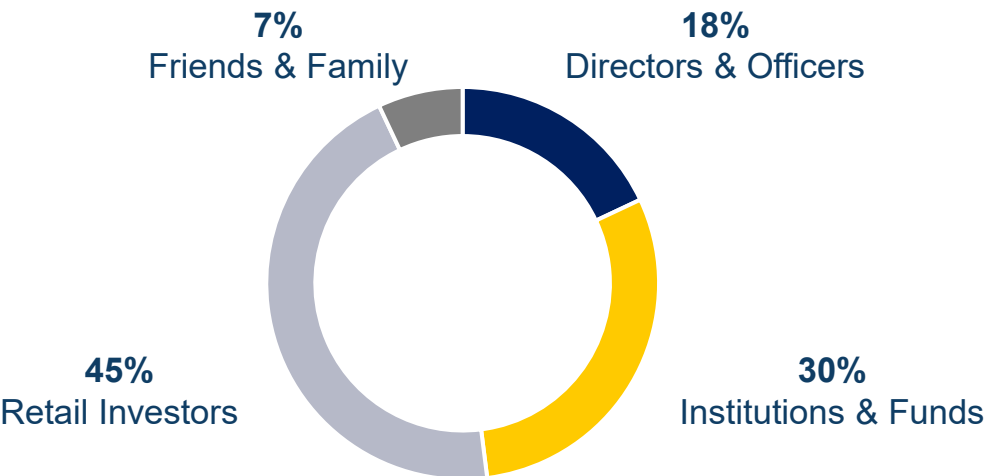
Institutional & Strategic Shareholders

Dundee Corporation
Cypress
Middlefield
Merk Funds
Maple Leaf Fund

Franco-Nevada
Rob McEwen

*Through private holding company Evanachan Ltd.

Directors & Officers 18% Insider Ownership



Share Structure (June 2025)

Shares Outstanding	224,508,635
Shares Fully Diluted	267,481,365
Market Capitalization	~\$31M
Daily Average Volume	~200,000

May 15th, 2025: Closed brokered private placement financing with Red Cloud for \$4.6 million

Analyst Coverage RED CLOUD
SECURITIES INC.

Taylor Combaluzier, P.Geo. - Tel 1-877-919-5979

Investment Highlights



Low-Cost Exploration & Development in Southern British Columbia



Spences Bridge Gold Belt, southern British Columbia

- Underexplored low sulphidation epithermal gold district
- 100% owned by Westhaven
- Excellent power and transportation infrastructure

Shovelnose Gold Property

- Cornerstone Asset
- 2025 Updated PEA
- High Margin / Low Cost, Rapid Payback
- High Grade underground opportunity

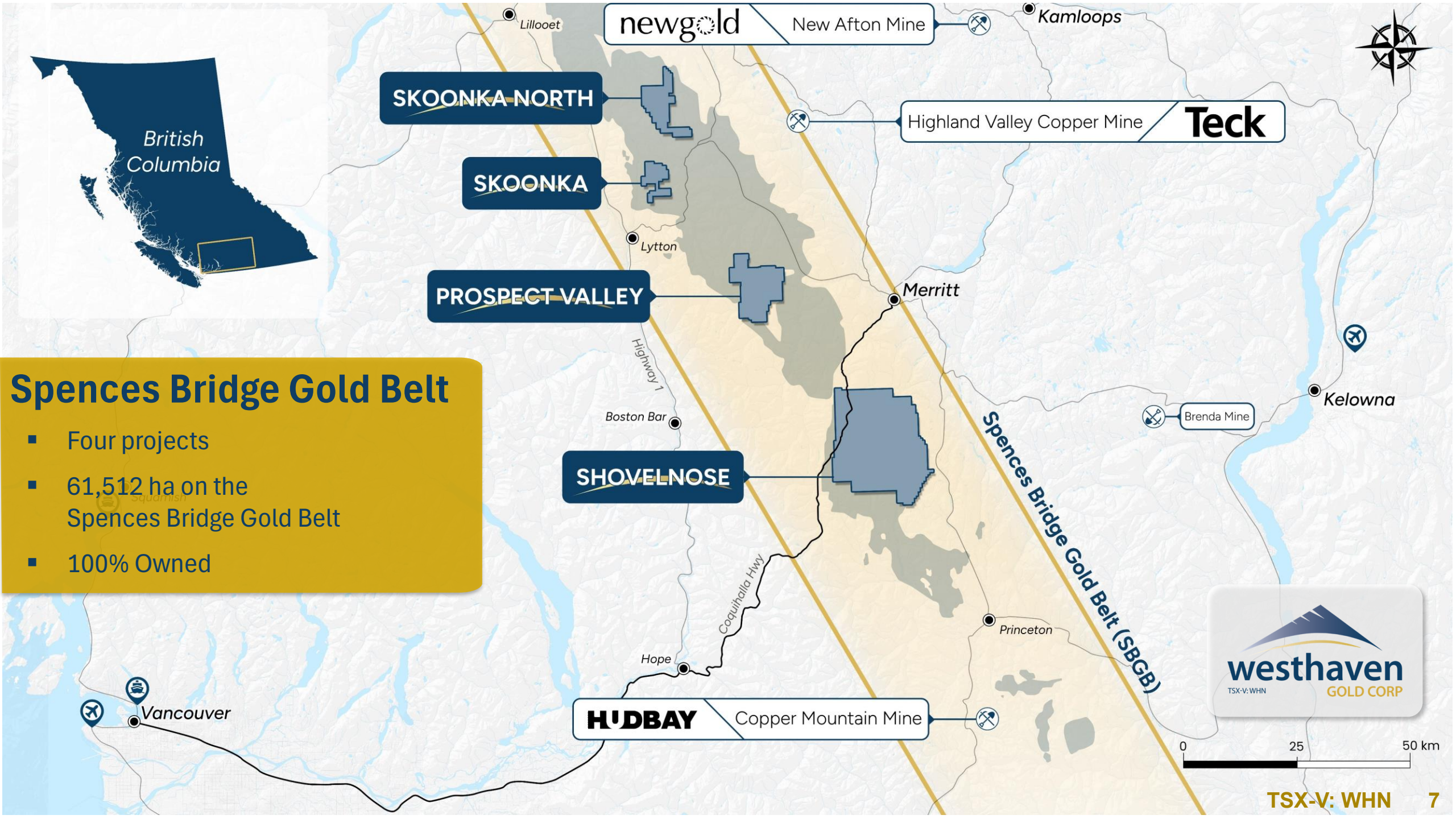
Regional Exploration Upside

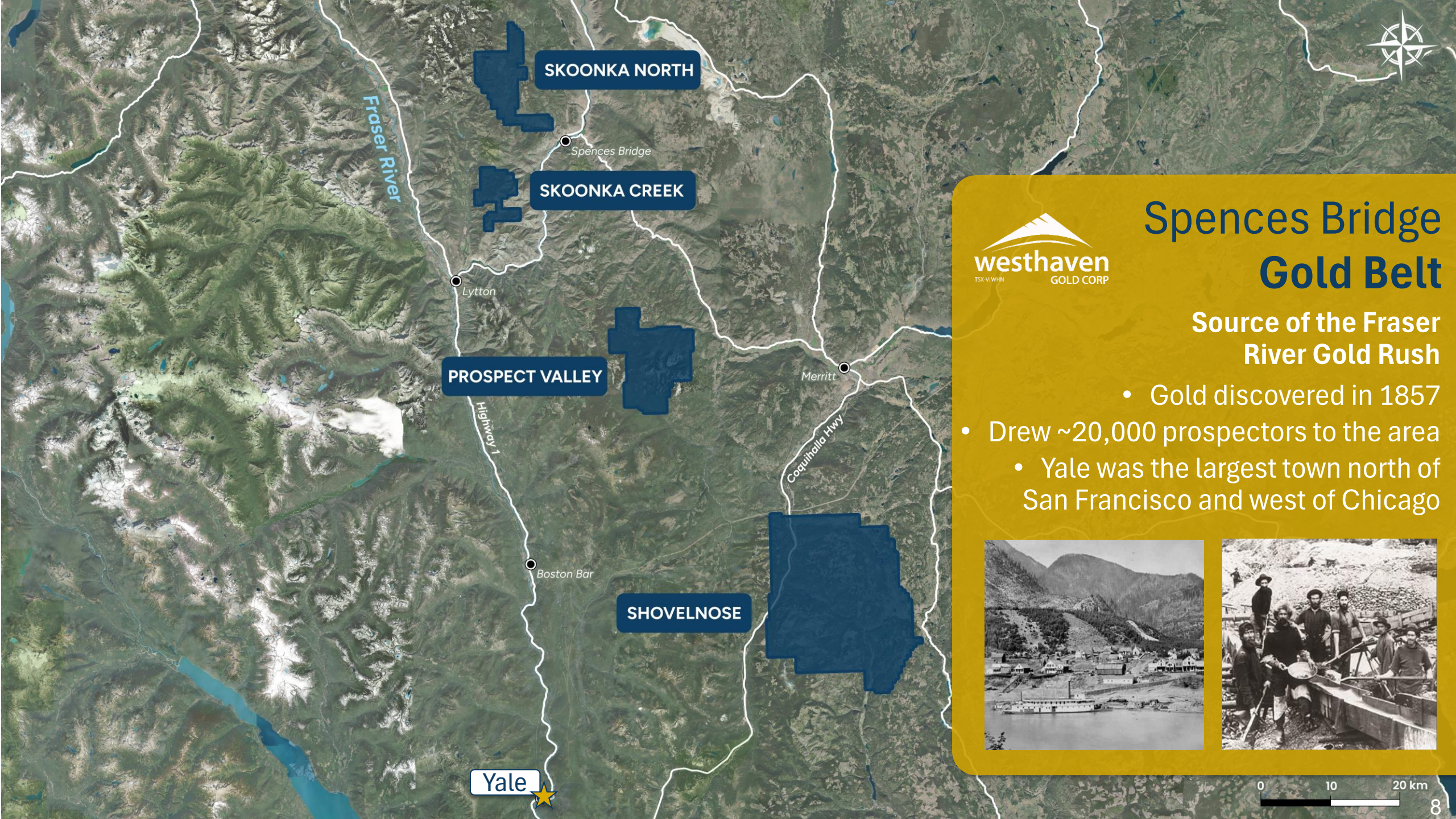
- Developing a pipeline of exploration targets
- 4 properties (>60,000 ha)



Spences Bridge Gold Belt

- Four projects
- 61,512 ha on the Spences Bridge Gold Belt
- 100% Owned

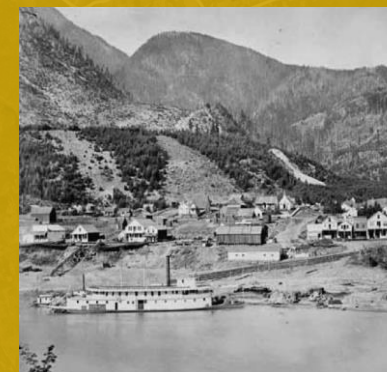




Spences Bridge Gold Belt

Source of the Fraser River Gold Rush

- Gold discovered in 1857
- Drew ~20,000 prospectors to the area
 - Yale was the largest town north of San Francisco and west of Chicago



0 10 20 km









Power Line

Area of Exploration Focus



SHOVELNOSE

Shovelnose Gold Property

-  2.5-hour drive from Vancouver
-  30-minute drive from Merritt
-  Coquihalla Highway crosses property
-  Powerline on property
-  Heavily logged, >400km of forestry roads
-  Year-round exploration

Shovelnose Gold Project

Milestones Achieved

2018

2022

2023

2024

2025

South Zone

Discovery Hole

24.5 g/t Au / 17.7m

FMN Zone

*Highest Grade Au
intercept ever
drilled
on property*

37.2 g/t Au / 23m

Franz Zone

*Bonanza
Grades*

39.2 g/t Au / 12m

**650 Drill Hole
Permit**

Received

**5 Year
Exploration
Permit**

Updated PEA

Robust Economics

**High Margin
Low Cost
Underground Mining
Opportunity**



Shovelnose Project

**Next to a major highway,
30 minutes from Merritt, B.C.**

Robust Preliminary Economic Assessment

High Grade Underground Mining Scenario



All amounts are in Canadian Dollars unless otherwise noted based on base case parameters of US\$2400 per ounce gold, US\$28 per ounce silver and CDN/US exchange rate of \$0.72

TSX-V: WHN

\$454M after-tax NPV_{6%}

43.2% after-tax IRR

\$184M preproduction capex

2.1 year after tax pay back

56,000 oz Au average annual production

US\$836/oz AuEq AISC

11.1 year mine life

1,000 tonnes / day production rate

637,000 oz Au and 3,562,000 oz Ag total payable metals

\$163M total projected British Columbia mineral taxes paid

\$284M total projected income taxes paid

>130 well-paying local full-time jobs during life of mine

**The PEA was prepared for Westhaven Gold Corp. by P&E Mining Consultants Inc. in accordance with NI 43-101 – Standards of Disclosure for Mineral Projects. Please see the technical report dated April 17th, 2025 titled: Updated Preliminary Economic Assessment and Mineral Resource Estimate of the Shovelnose Gold Project, British Columbia with an effective date of February 28, 2025. PEA base case parameters of US\$2,400 per ounce gold, US\$28 per ounce silver and CDN/US\$ exchange rate of \$0.72. AISC refers to All In Sustaining Costs as defined per World Gold Council guidelines, less corporate G&A. PEA is preliminary in nature and includes Inferred Mineral Resources that are considered too speculative geologically to have economic considerations applied to them that would enable them to be classified as Mineral Reserves, and there is no certainty that the PEA will be realized. Mineral Resources that are not Mineral Reserves do not have demonstrated economic viability. The technical and scientific information in this presentation has been reviewed and approved by Peter Fischl, P. Geo. who is a Qualified Person as defined by National Instrument 43-101 Standards of Disclosure for Mineral Projects.*

Shovelnose Updated PEA

Operating and Economic Summary



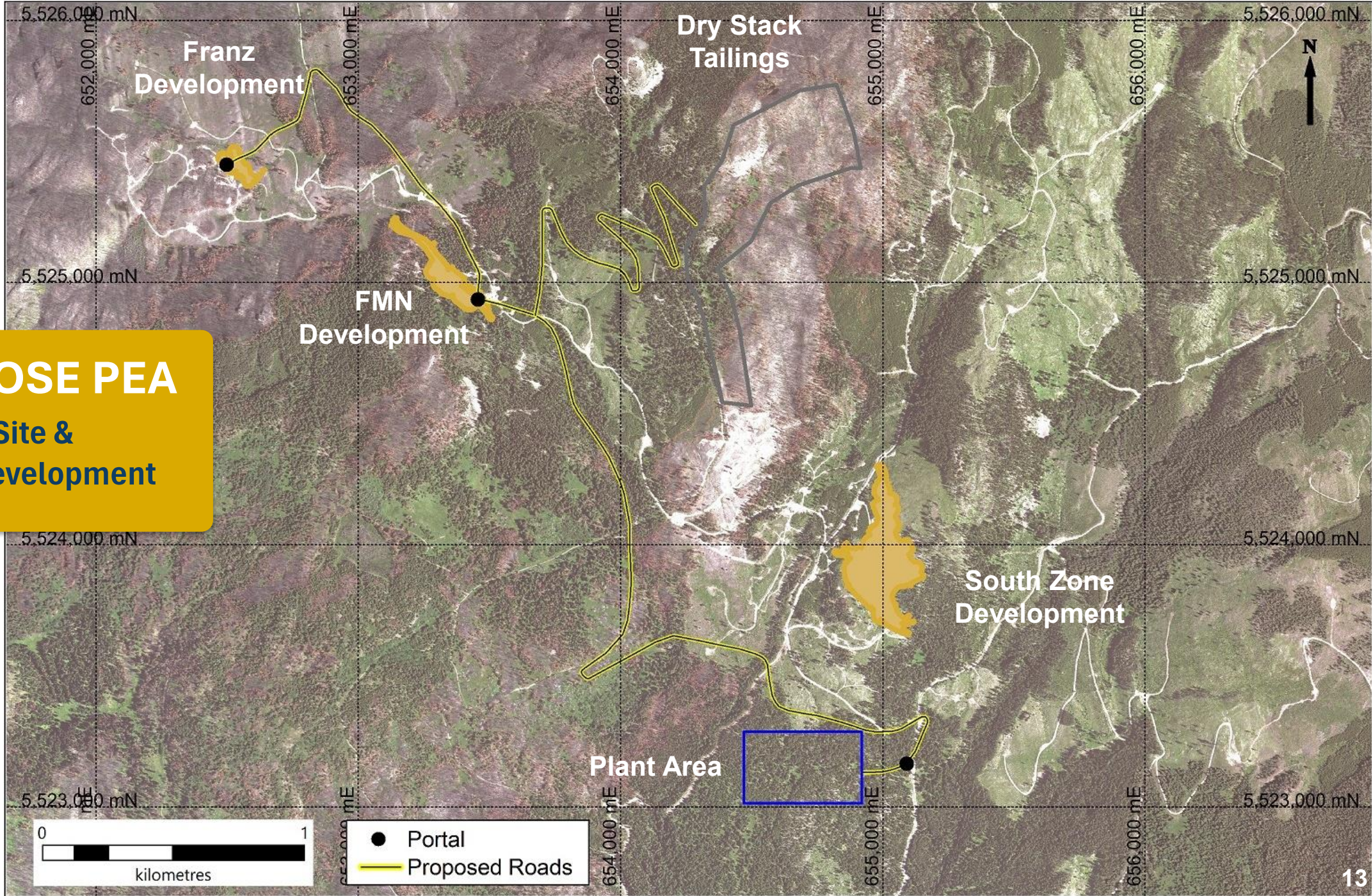
*Please see the technical report dated April 17th, 2025 titled: Updated Preliminary Economic Assessment and Mineral Resource Estimate of the Shovelnose Gold Project, British Columbia with an effective date of February 28, 2025, as well as the additional disclosures on slide #11 of this presentation.

Updated PEA Summary Outcomes

Operations	LOM	11.1 years
	Production rate	365 ktpa
	Total production	4,159 kt
	LOM gold grade / silver grade	5.26 g/t / 31.9 g/t
	Avg Au / Ag process recoveries	91.5% / 92.9%
	Avg Au / Ag smelting/refining	99% / 90%
	LOM Au / Ag payable	637 / 3,562 (koz)
Capital Costs	Initial capital cost	\$184 M
	Sustaining capital cost	\$199 M
Operating Costs	Operating cost	\$141.7 / t processed
	Operating cash cost	US\$ 628 / oz AuEq
	All-in sustaining cost	US\$ 836 / oz AuEq
Financials	NPV(6%) - pre-tax / after-tax	\$730 M / \$454 M
	IRR - pre-tax / after-tax	56.3% / 43.2%
	After-tax payback period	2.1 years
	After-tax cash flow	\$785.1 M

SHOVELNOSE PEA

Proposed Mine Site &
Underground Development
Areas



Shovelnose Underground Mine Design and Stope Blocks

13.1 year mining period

Portal & main ramp access to all mining areas

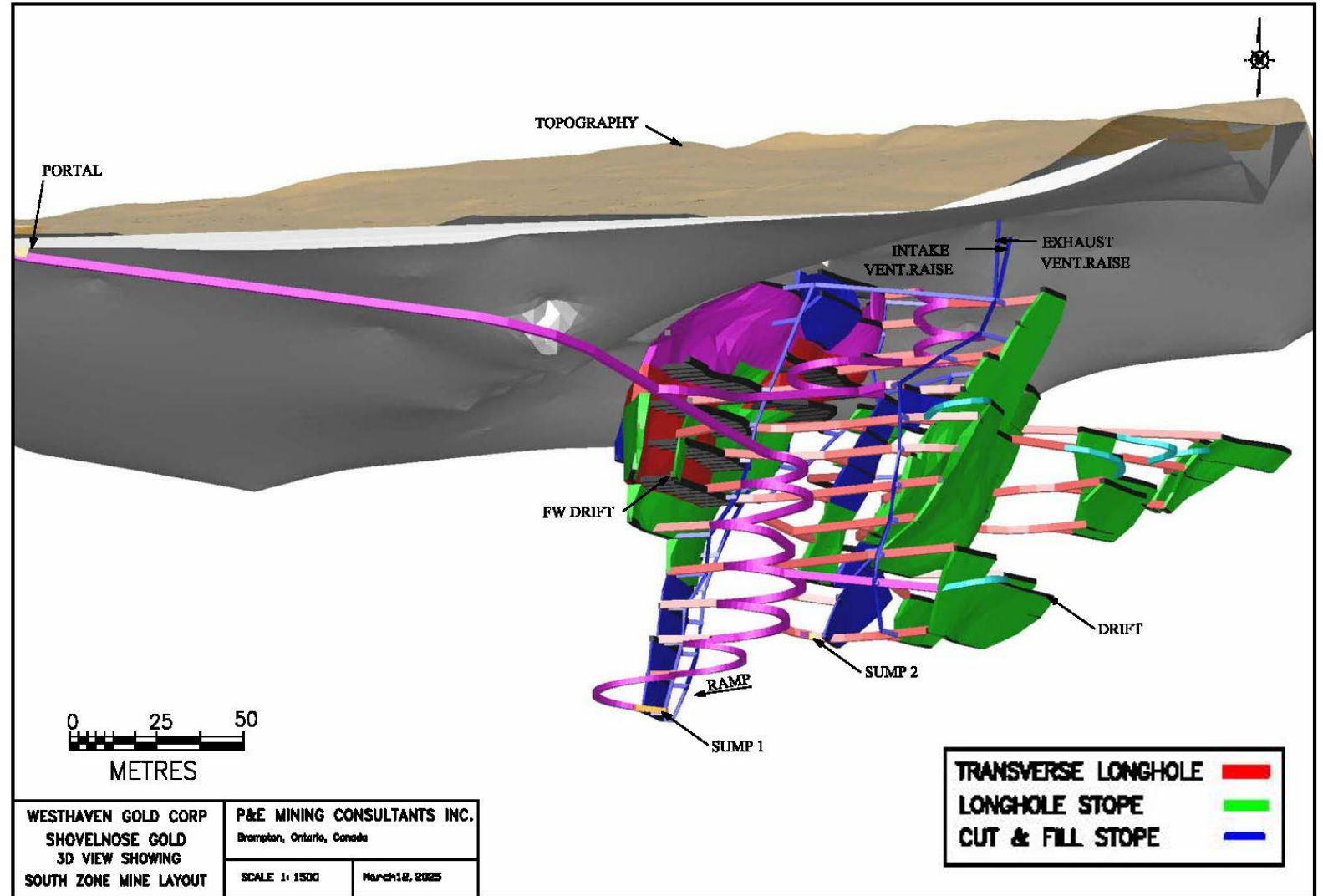
Three mining methods using mechanized trackless equipment

- Longitudinal Longhole Retreat (67%)
- Transverse Longhole (25%)
- Cut & Fill (8%)

Max mining depth of 325m (South Zone)

Gold extraction using conventional cyanide leaching processes

Process tails disposal using paste backfill and dry-stacking



*Please see the technical report dated April 17th, 2025 titled: Updated Preliminary Economic Assessment and Mineral Resource Estimate of the Shovelnose Gold Project, British Columbia with an effective date of February 28, 2025, as well as the additional disclosures on slide #11 of this presentation

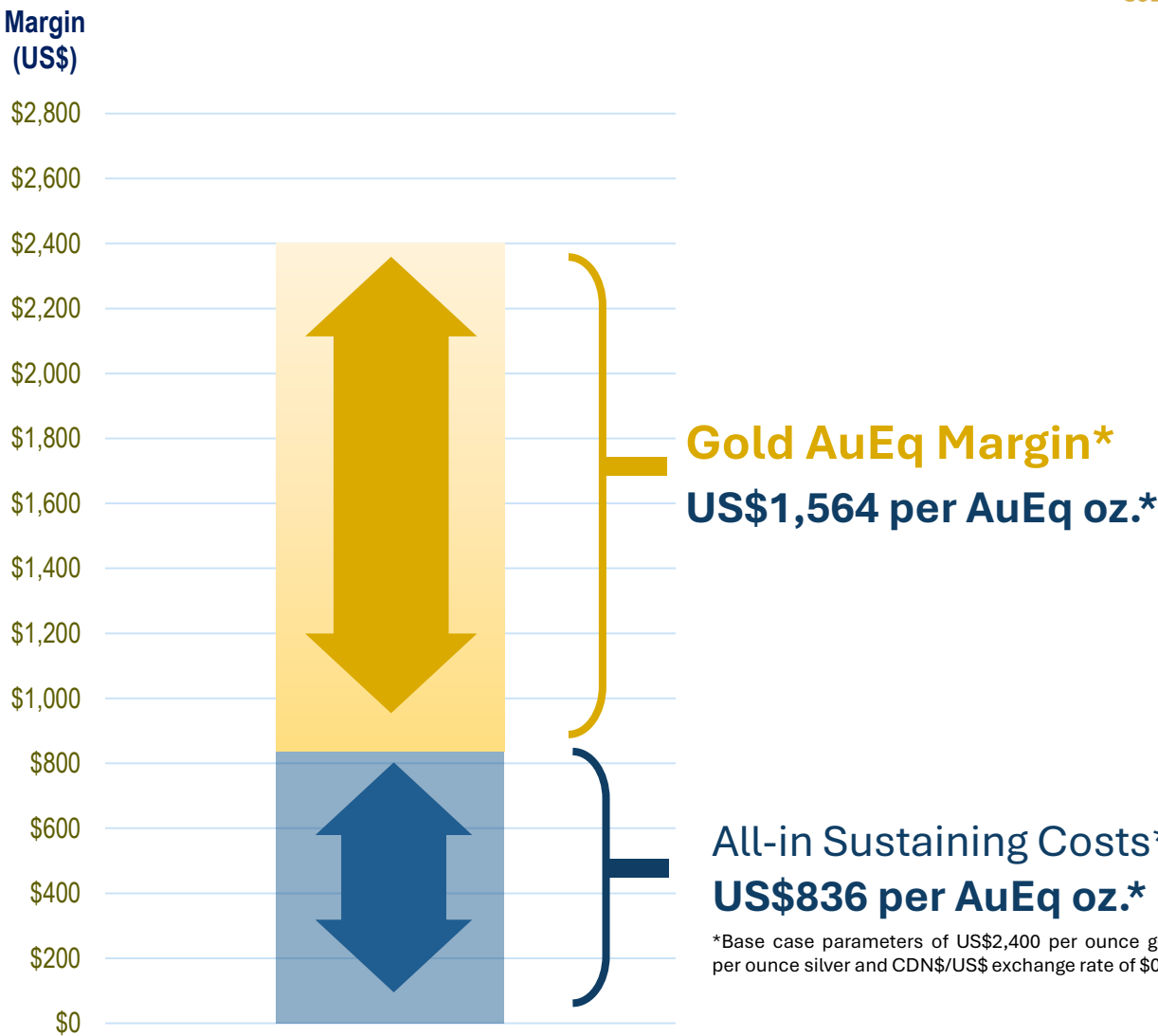
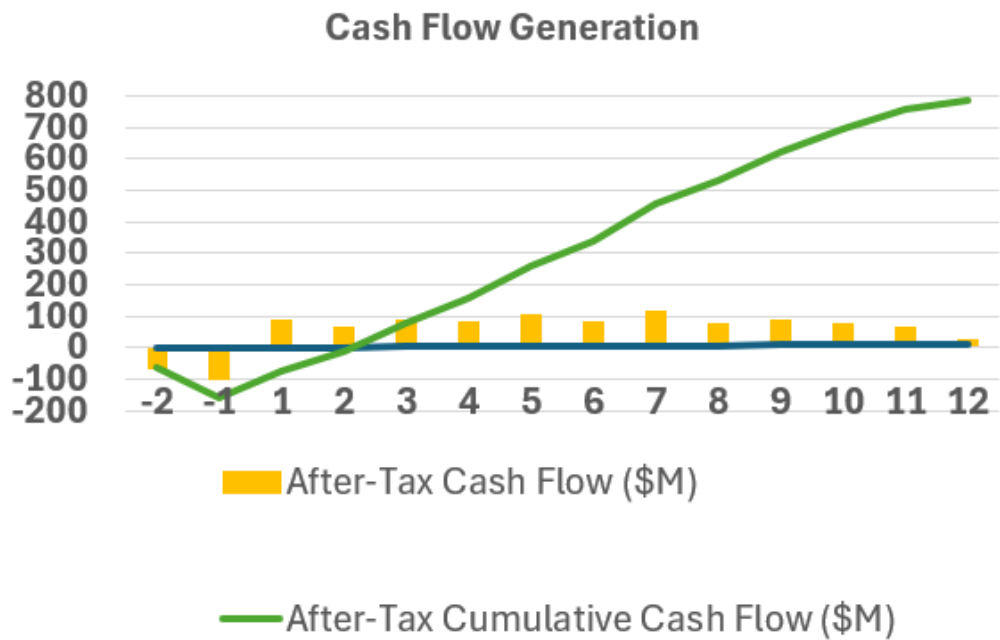
Preliminary Economic Assessment



Cash Flow Generation: High Margin - Low Cost

AISC and Margin Drivers

- South Zone mining width up to 37m; steep orientation
- Au grade and recovery
- Ease of access
- Proximity to power and transportation infrastructure



All-in Sustaining Costs*
US\$836 per AuEq oz.*

*Base case parameters of US\$2,400 per ounce gold, US\$28 per ounce silver and CDN\$/US\$ exchange rate of \$0.72.

*Please see the technical report dated April 17th, 2025 titled: Updated Preliminary Economic Assessment and Mineral Resource Estimate of the Shovelnose Gold Project, British Columbia with an effective date of February 28, 2025, as well as the additional disclosures on slide #11 of this presentation.

Economic Sensitivity to Long Term Gold Price

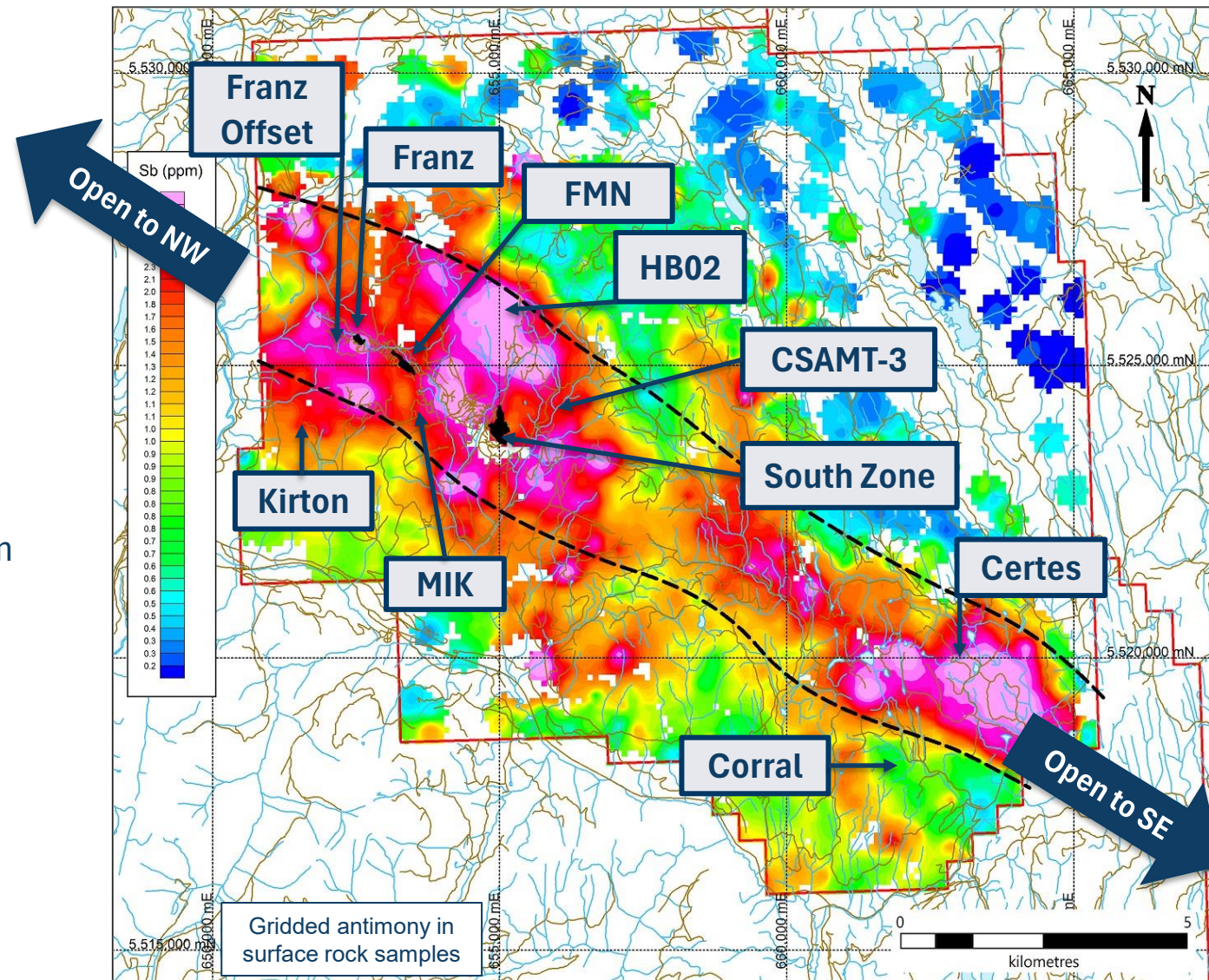
**Base case parameters of US\$2,400 per ounce gold, US\$28 per ounce silver and CDN\$/US\$ exchange rate of \$0.72.*

Long Term Metal Price Variability	Corresponding Gold Price	After Tax NPV (at 6%)	After Tax IRR
<i>(percentage change)</i>	<i>US\$/ounce</i>	<i>CDN \$ millions</i>	<i>(%)</i>
- 20%	1,920	284	30.4
- 10%	2,160	369	36.9
*base case	2,400	453	43.2
+ 10%	2,640	538	49.5
+ 20%	2,880	622	55.7

*Please see the technical report dated April 17th, 2025 titled: Updated Preliminary Economic Assessment and Mineral Resource Estimate of the Shovelnose Gold Project, British Columbia with an effective date of February 28, 2025, as well as the additional disclosures on slide #11 of this presentation.

Shovelnose – 13 Kilometre Mineralized Corridor

- 13 km mineralized corridor
- Limited drilling
- Multiple target areas outside of 2025 mineral resource, including:
 - Franz Offset – Priority structural target
 - MIK – past drilling includes 17.6 g/t Au over 3.6m
 - HB02 – past drilling includes 3.2 g/t Au over 0.9m
 - CSAMT-3 – Impressive pathfinder halo in bedrock
 - Certes – buried epithermal system
 - Kirton – quartz veins with geochem support
 - Corral – quartz veining and pathfinder halo





British
Columbia

Skoonka

- Historic & WHN Drilling
- 20.2g/t Au over 12.8m (historic)
- 1.28g/t Au over 48.05m (2022)
- 6.83g/t Au over 5.66m (2022)

Skoonka North

- High gold-in-silt results: 1,720 ppb Au
- Comparable to top gold-in-silt results on Shovelnose (1,985 ppb Au)
- This is how Shovelnose started!

Prospect Valley

- Historic & WHN Prospecting & Drilling
- 43.3g/t Au in float
- 1.57g/t Au over 45.7m
- 3.62g/t Au over 6.7m

SPENCES BRIDGE GOLD BELT PROJECT PIPELINE



TSX-V: WHN

18

The Westhaven Way



Our Mission

To deliver the highest standards of environment and social responsibility, with a specific focus on generating positive and long-term returns for all key stakeholders.



Commitment to the Environment

Westhaven acknowledges that there are more than 32,000 archaeological sites currently recorded in British Columbia with many more being added to the provincial inventory every year. We have established a protocol to increase awareness of this important resource and to assist in planning future developments.



Workplace Diversity*

Our employees come from around the world, and we are proud to partner with the local stakeholders and First Nation communities of the Nlaka'pamux Nation.

- Total First Nation Days - 46%
- Women in Mining – 24%
- Diversity Including First Nations - 67%
- Local Employment – 50%



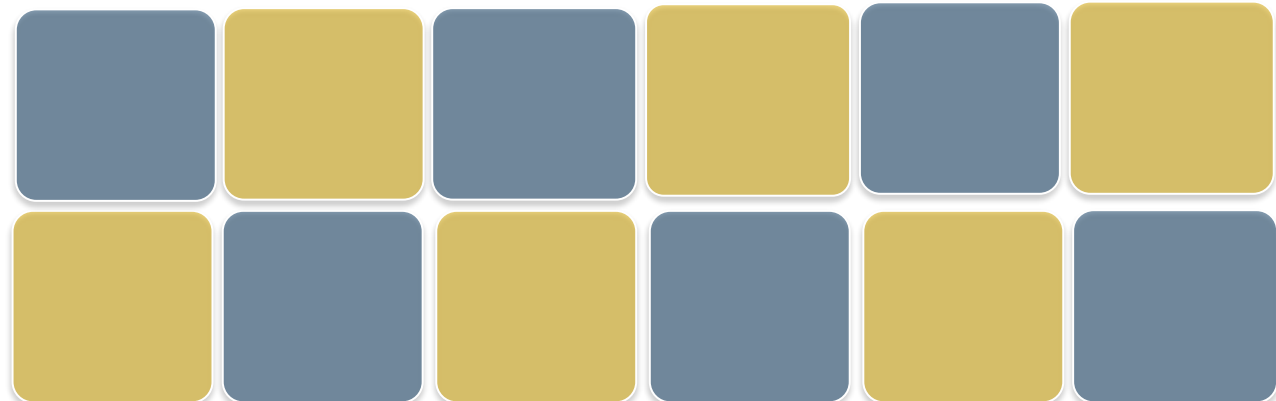
*Cumulative since 2020

Advance Shovelnose Gold Project towards Feasibility:

- First Nation / Stakeholder engagement
- Resource Conversion
- Metallurgy
- Geotechnical and hydrogeology
- Permitting

Regional Exploration Upside

- Continue drill testing & developing a pipeline of exploration targets on Shovelnose
- Advancing exploration on three additional gold properties along the Spences Bridge Gold Belt
 - Prospect Valley – 43.3 g/t Au in float
 - Skoonka – 20.2 g/t Au over 12.8m (historic drilling)
 - Skoonka North – high gold-in-silt results 1,720 ppb



**Contact us for
more information:**

Sean Thompson

604-681-5558

info@westhavengold.com

www.westhavengold.com



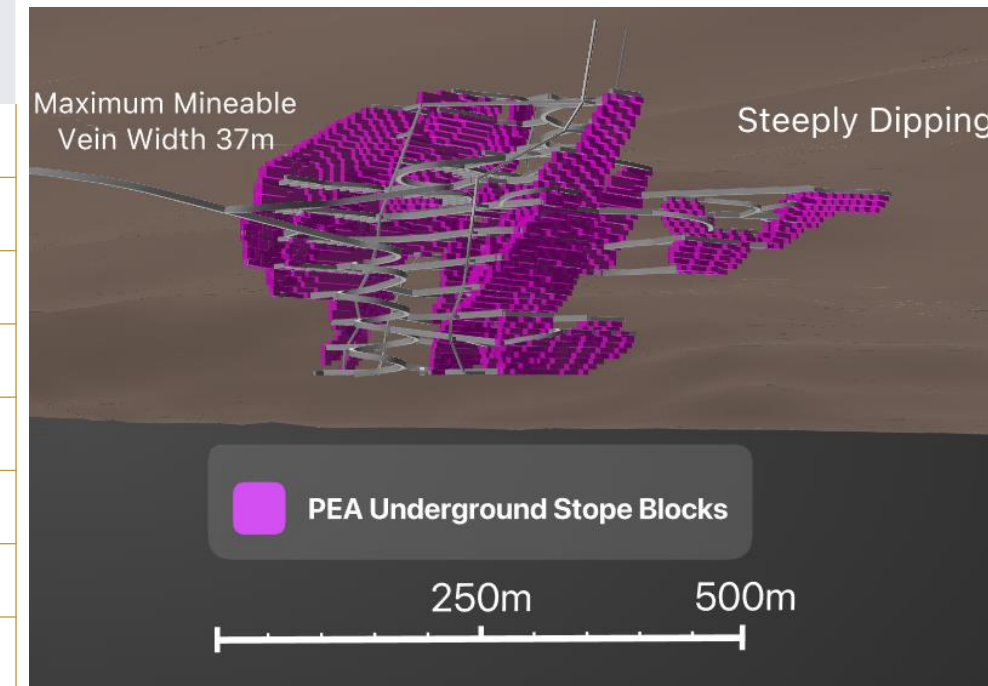
Robust High Grade Underground Mineral Resource

Shovelnose Underground Mineral Resource Estimate

Classification	Zone	Tonnes (k)	Au (g/t)	Contained Au (k oz)	Ag (g/t)	Contained Ag (k oz)
Indicated	South	3,107	6.1	616	33	3,302
	Franz	89	7.4	21	30	88
	FMN	241	5.0	39	22	173
	Total	3,437	6.1	677	32	3,564
Inferred	South	1,386	3.7	168	16	736
	Franz	63	3.4	7	51	105
	FMN	843	3.4	94	37	1,017
	Total	2,292	3.6	270	25	1,859

1.3 g/t AuEq Cut-off

South Zone



P/NAV comparison

Westhaven vs. Peer Group of Gold Developers

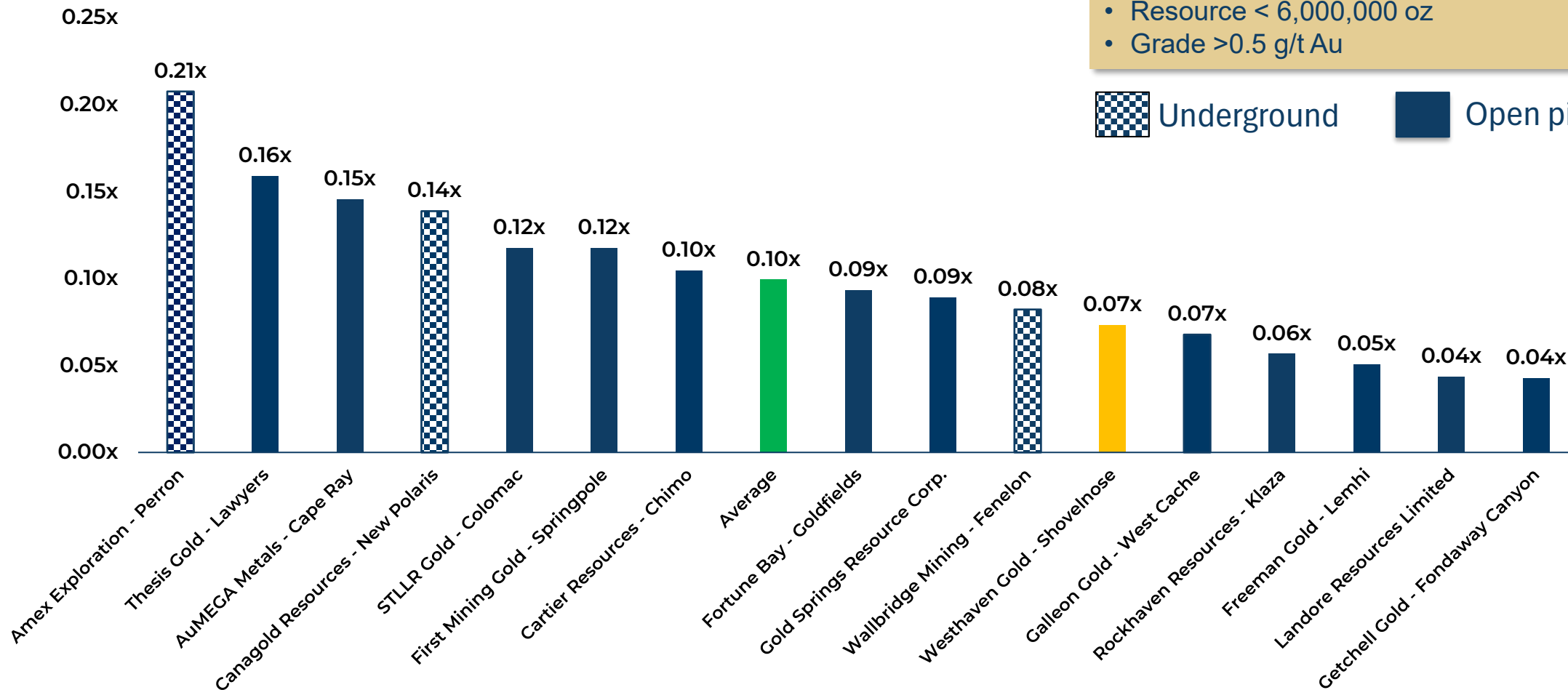
P/NAV

Peer screening criteria:

- North American Gold Projects
- PEA or PFS published since 2020
- Open pit / Underground or combination
- Resource < 6,000,000 oz
- Grade >0.5 g/t Au



 Underground  Open pit



Source: S&P Capital IQ Pro, Company reports / published PEA / economics studies as of April 24, 2025.

Shovelnose P/NAV derived from Red Cloud Securities estimates published March 4th, 2025; Analyst Coverage: Taylor Combaluzier, P.Geo. - Tel 1-877-919-5979

Shovelnose Gold Property Drilling Highlights

FRANZ

39.4 g/t Au over 12m

FMN

37.2 g/t Au over 23m

MIK

17.6 g/t Au over 3.6m

ALPINE

20.2 g/t Au over 8m

SOUTH ZONE

39.3 g/t Au over 12.6m



Vein traces as defined in mineral resource estimate (PEA), does not reflect actual geological extent.

